



# Annual Report 2025

For the fiscal year ended December 31, 2025  
City of Spruce Grove, Alberta, Canada



**HIGHLIGHTS**

A photograph of a park path in autumn. The path is paved and leads through a wooded area. The trees have yellow and orange leaves, and there are many fallen leaves on the ground. In the background, a multi-story building is visible through the trees.

## Land Acknowledgement

The City of Spruce Grove is honoured to acknowledge the land we work, play, and make our homes on as Treaty 6 territory, and the Métis Homeland. This is sacred land that holds the hearts, footsteps and spirits of many First Nation, Métis and Inuit Peoples, and in particular, Paul First Nation, Enoch Cree Nation, Alexis Nakota Sioux Nation, Michel First Nation, Alexander First Nation, the Lac Ste. Anne Métis, and Métis Nation of Alberta District 8. We recognize and acknowledge Indigenous values, traditional teachings, ways of being, contributions, and historical inequities. The City is dedicated to Truth and Reconciliation to help in healing, and learning to build reciprocal and trusted relationships. We commit towards strengthening relations and building bridges with the Indigenous Nations whose traditional territories the City is located within.



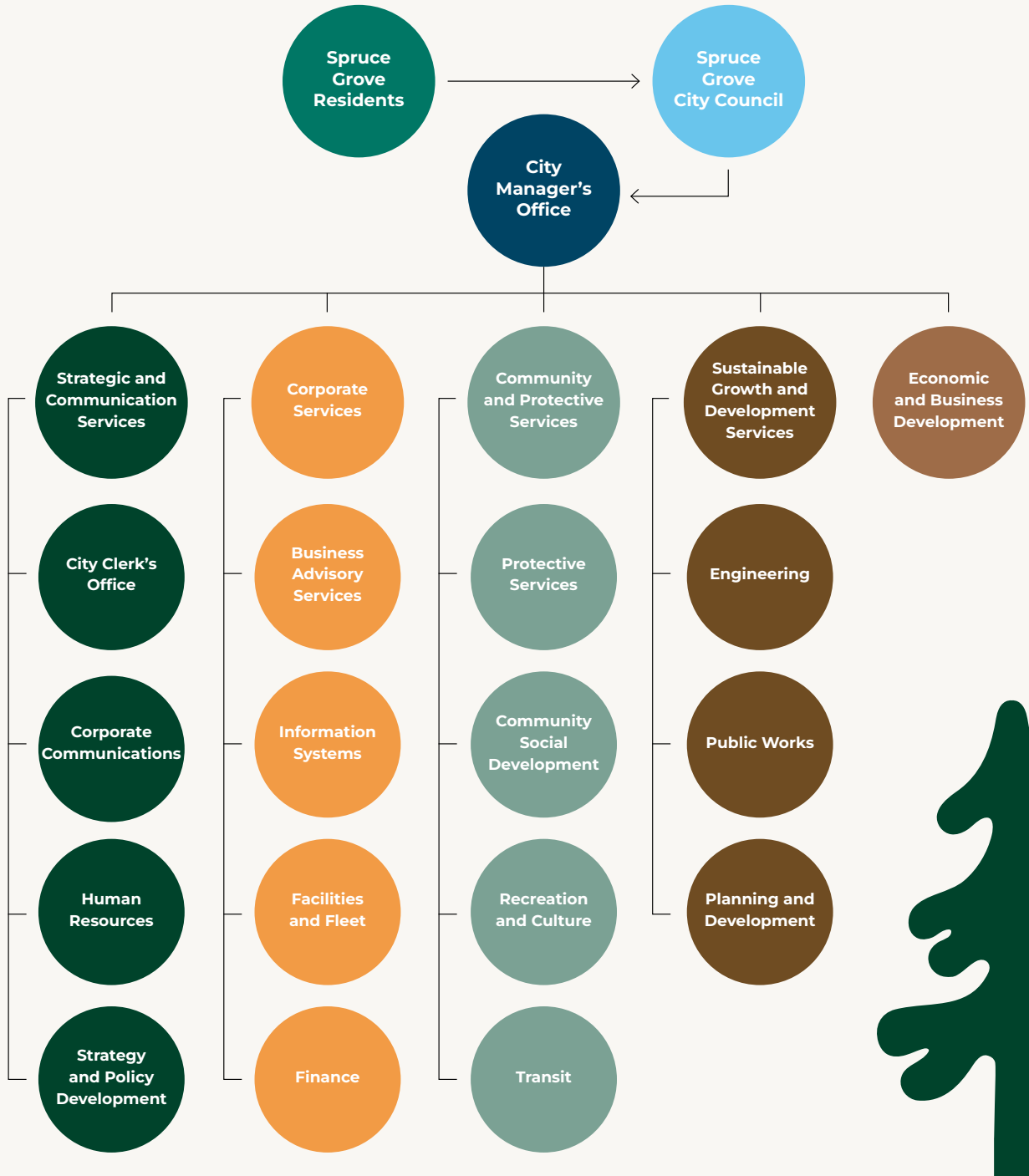
# Table of contents

---

The 2025 Annual Report Highlights provides an executive summary of the City of Spruce Grove's 2025 Annual Report, which can be found on the City's website at [sprucegrove.org/AnnualReport](https://sprucegrove.org/AnnualReport). The highlight document contains an overview of statistics, accomplishments for 2025 related to Council's Strategic Plan, and financial charts and graphs.

4	Governance Structure
5	Mayor's Message
6	City Council
7	Council's Strategic Plan Themes
8	Corporate Strategic Plan Highlights
12	Economic Overview
14	Financial Highlights
22	Financial Awards

# Governance Structure





# Mayor's Message



When I look back on 2025, there's one word that comes to mind above all else – community. Whether it was to celebrate, play, cheer, or explore, there was no shortage of opportunities to come together as a community.

In May, more than 5,000 people joined us for the grand opening of Heavy Metal Place, our new state-of-the-art, multi-purpose recreation and culture facility. With two NHL-size ice surfaces, a black box theatre, and a community walking track, it's a versatile space for residents of all ages. It's also the new home of the Allied Arts Council of Spruce Grove, an additional branch of the Spruce Grove Public Library, and the new Transit Centre. The grand opening was a jam-packed day of facility tours, live entertainment, public skating, children's activities, and commemorative souvenirs. And the fun didn't stop there – less than a month later, our city filled the rink to cheer for the Edmonton Oilers during the Stanley Cup finals during a series of free, family-friendly watch parties.

Our community spirit was on full display throughout the year as residents came together for events including Canada Day, Grove Gatherings, Spruce Up Spruce Grove, Alberta Day, and more. This sense of pride was also reflected in the addition of new public

art throughout our city. Three new murals added colour, character, and meaning to shared spaces, not only beautifying our community, but also sparking conversation, inspiring reflection, and celebrating the diverse voices and stories that make Spruce Grove unique.

In late summer, we came together again to celebrate the completion of the multi-year Re-imagined Central Park project—an effort that has transformed the heart of our city into something even more special. With a new wheeled sports park, a playground with accessible features, refreshed pathways and benches, and the beloved splash park, skating oval, and firepit, Central Park is now more than ever a place for people to gather, connect, and play.

None of this work would have been possible without you, our community. Thank you for showing up, for sharing your thoughts, opinions, and feedback, and for helping shape this incredible city. As I reflect on 2025, I am filled with nothing but pride for what we've accomplished. I can't wait to see what we make of 2026.

Jeff Acker,  
Mayor




# Spruce Grove City Council



**From left to right:** Councillor Brad Mastaler, Councillor Jeff Tokar, Councillor Erin Stevenson, Mayor Jeff Acker, Councillor Danielle Carter, Councillor Spencer Bennett, Councillor Jan Gillett

The City of Spruce Grove is governed by an elected Council comprised of a full-time mayor and six part-time councillors. Spruce Grove City Council is responsible for identifying the overall vision for the community and developing a long-term strategic plan for the City.

Council also reviews and approves new or amended policies and bylaws, as well as the annual Budget and Fiscal Plan which is the City's principal guiding document for providing residents with a high quality of life with affordable services, while also staying the strategic course of municipal economic sustainability.

 Mayor and Council  
780-962-7604

 [council@sprucegrove.org](mailto:council@sprucegrove.org)

# Council's Strategic Plan Themes

The City's 2022-2025 Strategic Plan outlined the goals and priorities for Spruce Grove City Council whose term was from 2021-2025. The plan contained four main themes: Community Connections, Environmental Sustainability, Economic Prosperity, and Governance in Action.

In June 2025, a Strategic Plan Final Report was published to highlight the efforts and accomplishments as the Strategic Plan approached its final year of implementation. This included fulfillment of 13 goals across the four main themes, some of which are highlighted below:



## Community Connections

Community Connections was a clear Council priority, focusing on community connection through recreation, culture, and nature, while also creating a sense of belonging for residents.

Two significant accomplishments under Community Connections included the construction of Heavy Metal Place, Spruce Grove's new multi-purpose recreation and culture facility. It also included the adoption of a new Municipal Development Plan, which helps the City identify areas of importance as a community so informed decisions can be made about future growth and development.



## Environmental Sustainability

Environmental Sustainability is all about protecting and enhancing the environment for both current and future generations. One of the main ways the City accomplished this was by launching the Clean Energy Improvement Program, which provides Spruce Grove homeowners with a low-interest way to implement energy efficient upgrades to their homes.



## Economic Prosperity

Economic Prosperity captures Council's commitment to advancing economic development in our city through investments the City Centre are supporting small businesses, and creating conditions that enable local enterprises to thrive. A key part of this theme was the City Centre Area Redevelopment Plan, which provided a framework for the redevelopment and revitalization of the City Centre.



## Governance in Action

Governance in Action ensures that governance processes represent the community in an effective and transparent way. Accomplishments included more inclusive and equitable recruiting practices, increased transparency and accountability of Council bylaws and policies, improved service delivery for residents, enhanced fiscal sustainability, stronger support for local entrepreneurs, increased regional collaboration, and improved capacity for effective advocacy.

To learn more and view the full list of goals accomplished in the 2022-2025 Strategic Plan, as well as view the makings of Council's new 2026-2029 Strategic Plan, visit [sprucegrove.org/StrategicPlan](https://sprucegrove.org/StrategicPlan).





# Council's Strategic Plan HIGHLIGHTS

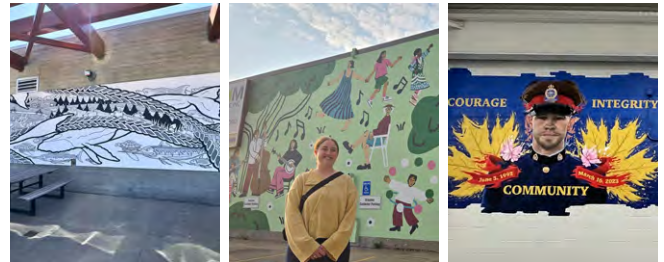


## Community Connections



- The City completed a significant multi-year enhancement to Central Park, which now offers a wide range of features and amenities for all ages and interests, including a wheeled sports park, a playground with accessible features, and a shaded seating and gathering area, as well as new pathways, benches, and lighting.

- Summer in the City programming included Adventure Camps, Art Explorer Camps, Leaders in Training, Teen Retreat, Pop-Up Playgrounds and Youth at the Log Cabin.



- More than 5,000 people came together to celebrate the grand opening of Spruce Grove's new culture and recreation facility, Heavy Metal Place. The new facility features two NHL-size ice surfaces, Spruce Grove Public Library's Northeast branch and the Allied Arts Council of Spruce Grove, a black box theatre, a new Transit Centre, and a community walking track.

- The City welcomed three new additions to our public art collection, including "The Journey" by Indigenous artist Brandon Atkinson, "Our Grove Gathering" by Edmonton-based artist Maaike Lynn, and a mural done by artist Josh Harnack to honour former Spruce Grove resident and Edmonton Police Service Constable Brett Ryan.





# Council's Strategic Plan HIGHLIGHTS



- Over 700 families, teams, schools, businesses, and individuals participated in the City's annual Spruce Up Spruce Grove and tree planting initiative, cleaning up our community and planting more than 400 new trees in Heritage Grove Park.



- Long-standing community volunteer Sharon Acheson was recognized in the City's Awards of Excellence program for her significant contributions in the Community Service category.



- A wide variety of City-led and community-initiated programs and events were held throughout Spruce Grove last year, providing opportunities for residents to come together and connect.



- Throughout 2025, the City of Spruce Grove's Community Outreach Team actively provided in-person support to 231 unique individuals and developed a Community Outreach Handbook to help support understanding of individuals experiencing vulnerability in our community.
- The Winter Emergency Response's Late Night Cafe was open 41 nights over the 2025/2026 winter season to provide warm, safe spaces to vulnerable individuals.
- Spruce Grove Fire Services responded to a total of 7,078 call in 2025.
- Spruce Grove Enforcement Services responded to a total of 4,632 calls in 2025.
- The City's website was visited over 1.5 million times and our corporate social channels (Facebook, Instagram, LinkedIn) all experienced significant growth in 2025.





# Council's Strategic Plan HIGHLIGHTS



## Environmental sustainability

- In April 2025, the Extended Producer Responsibility program launched for City recycling, offering residents more recycling options and reducing the amount of waste collected in black waste carts.



- On-demand transit Saturday service was expanded to include Stony Plain, providing residents with greater flexibility and accessibility between Spruce Grove and Stony Plain. Additionally, Spruce Grove's larger investment in on-demand transit in 2025 saw a 16 per cent increase in passengers compared to 2024.
- The City's Clean Energy Improvement Program saw strong uptake with 136 applications within five months, reaching program capacity faster than any similar-sized municipality in Alberta.
- In partnership with the Spruce Grove Public Library, Home Energy Efficiency Kits were made available to residents to assess energy usage, discover opportunities for efficiencies and potential cost savings, and see associated environmental impacts.



- After successful installation at the City's Public Works facility, the City installed solar panels on the rooftop of the Protective Services building, helping reduce greenhouse gas emissions and promoting renewable energy.
- The City's curbside waste collection program gathered 260 kg of average household organics, 92 kg of average household recyclables, and 691 kg of average household waste, with a total of 4,469 tonnes of waste diverted from landfills at a rate of 33.7 per cent.



- Spruce Grove's Eco Centre saw 42,123 visitors and collected 45 tonnes of recyclables, 109 tonnes of cardboard, 258 tonnes of metal, 315 tonnes of organics, and 761 tonnes of waste.
- The Trim Your Trash app saw 5,379 first-time visitors, 36,034 viewed items, 42,251 calendar views, 1,019 reminders created, and 557 games played.



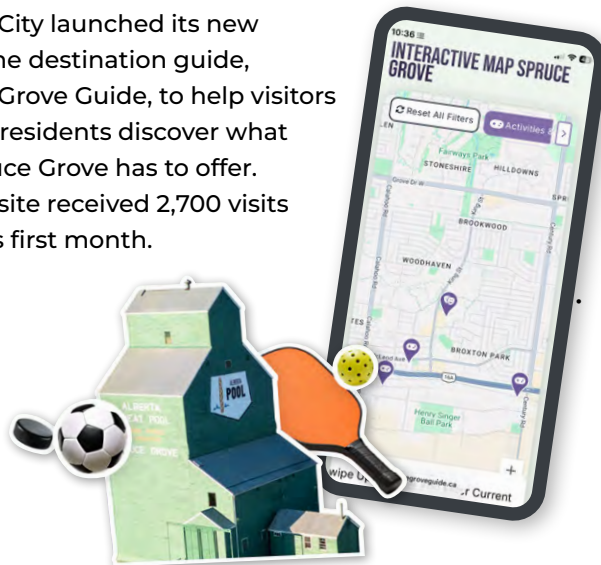
# Council's Strategic Plan HIGHLIGHTS



## Economic prosperity



- The City issued a combined 1,232 residential and non-residential building permits in 2025, saw 1,050 new residential dwelling units, and achieved \$311 million in total construction value of all building permits.
- Work continued on Legacy Park, a new commercial and multi-family residential development on the west side of the city.
- In its first year, 17 entrepreneurs completed the SMARTstart program, which is an eight-month entrepreneurial training program with 12 workshops.
- The City launched its new online destination guide, The Grove Guide, to help visitors and residents discover what Spruce Grove has to offer. The site received 2,700 visits in its first month.



Spruce Grove's City Centre Storefront Improvement Program completed its first three-year term with 21 completed projects and over \$1.9 million in private investments into the City Centre. The program has been renewed for another three years.



- Phase one of the Boundary Road project was completed in November 2025, with final completion expected for late 2026.
- Numerous construction projects were completed with upgrades to road surfaces, storm sewer infrastructure, pedestrian access, and traffic signals.





# Council's Strategic Plan HIGHLIGHTS



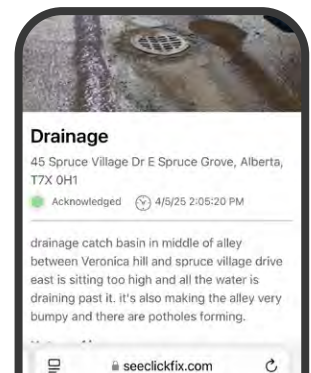
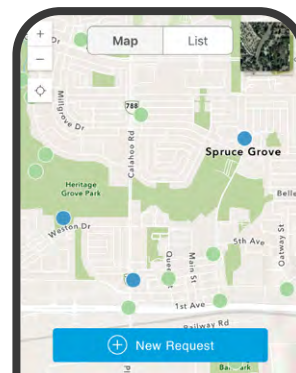
## Governance in Action



- City Council approved a Housing Strategy to respond to Spruce Grove's growing population. It takes into account the community's existing housing inventory, gaps, and the types of housing that may be needed in the future, while considering the role of the municipality within the local housing system.
- The City launched a new online reporting dashboard to provide residents with intersection collision data, helping the City identify high-risk intersections and implement targeted safety measures to reduce accidents and improve overall road safety.



- A new Property Tax Estimator Tool provides residents with a quick and easy way to estimate their annual property taxes based on their assessed property value. This tool helps residents better understand where their property taxes go and is part of the City's ongoing commitment to digital accessibility and transparency.
- SeeClickFix, the City's online reporting tool for non-emergency issues, was used 1,398 times in 2025 to report issues related to things like missed waste collection, potholes, sidewalk concerns, and graffiti.





# Economic Overview

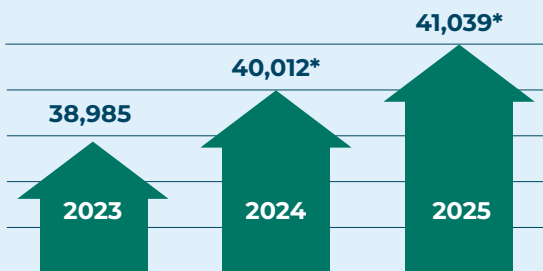


The City of Spruce Grove is a vibrant, dynamic community of more than 40,000 people.

Located just 11 kilometres west of Edmonton, the City offers a variety of housing options, excellent schools, sports, culture and recreation facilities, and a mix of businesses ranging from national retailers, shops, locally owned and chain restaurants, and professional services.

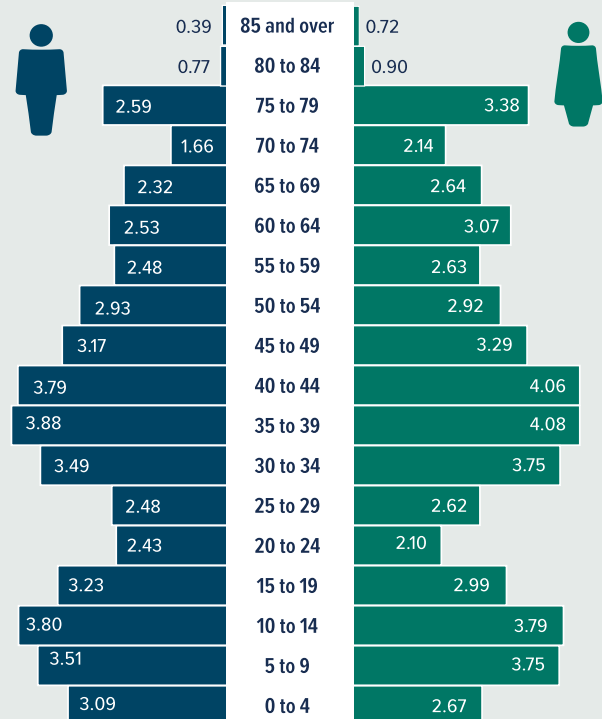
## POPULATION (LAST 3 YEARS)

Spruce Grove has an average annual growth rate of 2.6 per cent over the past decade, making it one of the fastest growing municipalities in Alberta.



\*Estimated population based on regional and provincial population growth projections

## POPULATION BY AGE AND GENDER (%)\*



\*According to data from the 2023 municipal census



# Economic Overview



## HOUSEHOLD STATISTICS\*



**2.5**  
RESIDENTS  
PER HOUSEHOLD



**\$106K**  
MEDIAN  
HOUSEHOLD INCOME



**39.2**  
AVERAGE  
AGE



**75.4%**  
OWNED  
(HOME OWNERSHIP)

\*According to data from the 2023 municipal census and the 2021 national census



**1,568**

LOCAL BUSINESSES WITH  
AN ACTIVE BUSINESS LICENCE



**1.1%**  
RETAIL  
VACANCY RATE



**5.1%**  
OFFICE  
VACANCY RATE

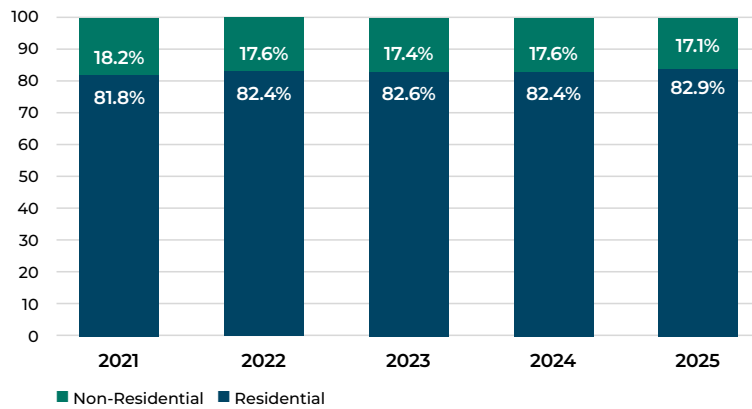


**2.0%**  
INDUSTRIAL  
VACANCY RATE

## RESIDENTIAL ASSESSMENTS

An economic indicator considered by the City is the proportion of total property assessment value derived from residential and non-residential assessments, which provides insight into financial sustainability and maintaining reasonable and competitive levels of taxation.

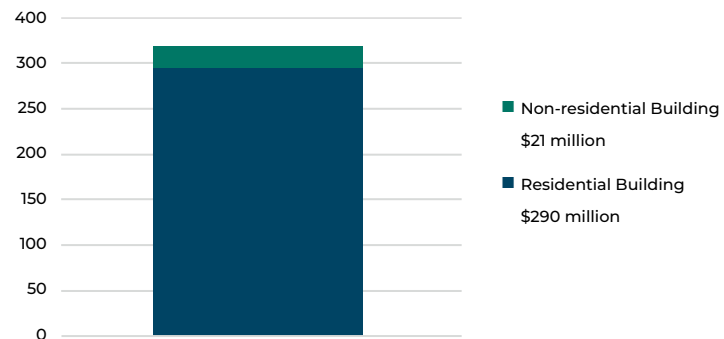
### PROPERTY ASSESSMENT SPLIT



## BUILDING PERMITS

Spruce Grove saw incredible growth in 2025 with the total construction value of building permits reaching \$311 million.

### BUILDING PERMIT VALUES (MILLIONS)





# Financial Highlights

## Understanding the City of Spruce Grove's Financial Information

Annually, the City of Spruce Grove's Audited Consolidated Financial Statements are prepared in accordance with provisions set out in the Municipal Government Act (MGA) and must comply with Canadian Public Sector Accounting Standards, which provides guidance for financial and other information reported by public sectors.

The condensed financial information presented on the following pages has been collected from the City of Spruce Grove's comprehensive 2025 Annual Report available online at [sprucegrove.org/AnnualReport](https://sprucegrove.org/AnnualReport).

### Definitions

**Financial Assets:** Financial assets are assets the City owns that are fairly liquid, such as cash, cash equivalents, investments, and accounts receivable (money owed to the City). Financial assets can be used to pay existing liabilities or finance future operations.

**Liabilities:** Financial obligations the City has to others, such as loans, deferred revenue, and accounts payable (money owed to others). Liabilities arise from past transactions or events and are expected to be settled in the future.

**Net Financial Debt:** The number resulting from subtracting liabilities from financial assets.

**Non-Financial Assets:** What the City owns that are used to deliver services, such as roads, buildings and equipment, also referred to as tangible capital assets. Non-financial assets may also include inventory and prepaid expenses.

**Accumulated Surplus:** The number resulting from adding net debt and non-financial assets. It indicates the net assets of the City.

### Significant Changes

Growth remained a defining feature of the City's progress in 2025. The opening of Heavy Metal Place and the completion of the Re-Imagined Central Park project marked a significant expansion of our recreation infrastructure, increasing both capacity and access to services for residents. This milestone occurred alongside continued development activity across nearly all sectors of the community.

Financial impacts associated with this growth were not uniform across all areas. Investments in new facilities and infrastructure contributed to increases in liabilities, including debt, which are necessary to support the acquisition of tangible capital assets. Operating expenses also rose as new amenities came online and required ongoing support, even as user fees helped offset a portion of these costs. These combined factors influenced the City's accumulated surplus, which reflects our long-term financial capacity to sustain services and infrastructure.

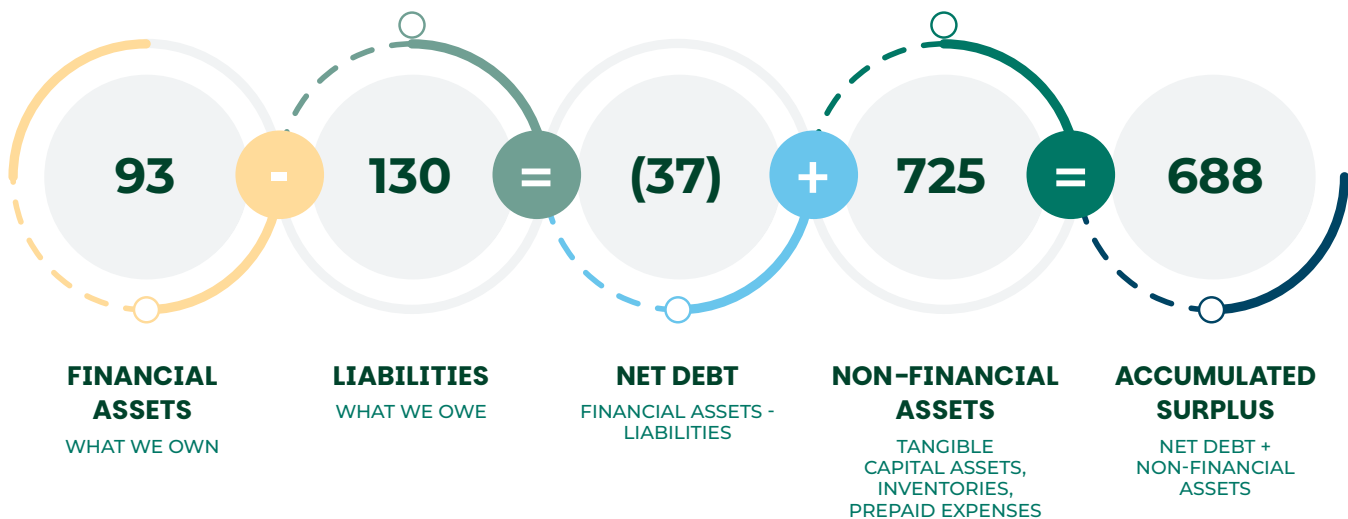
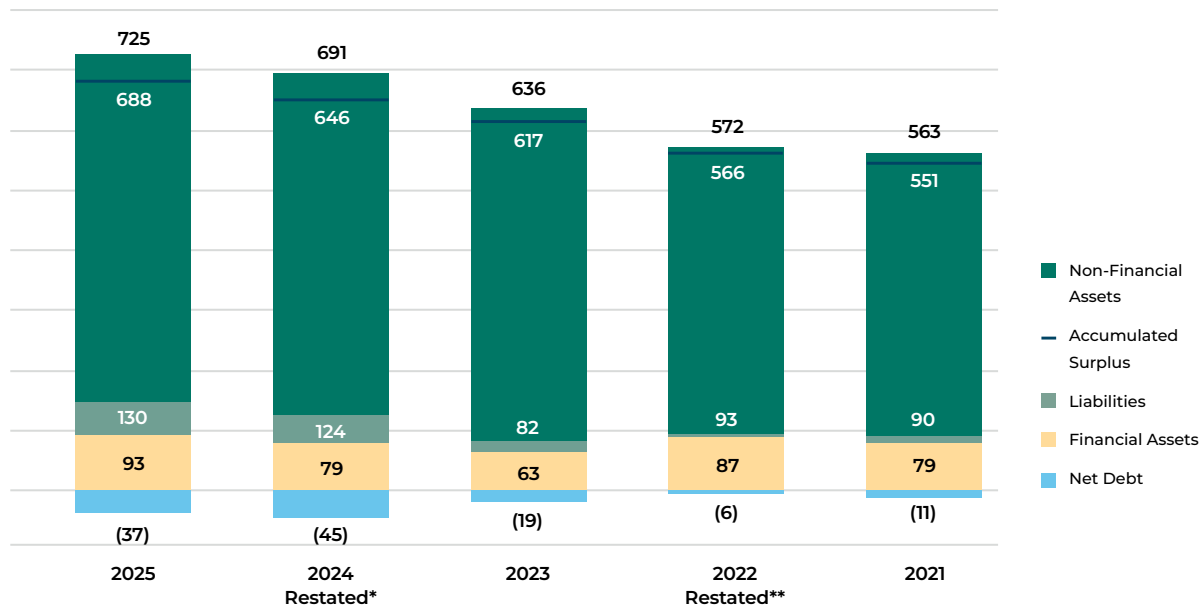
Overall, the growth experienced in 2025 strengthens the City's ability to meet the evolving needs of the community. It also enhances the City's attractiveness to prospective residents and developers, encouraging continued investment and supporting the long-term vitality of our neighbourhoods.

## Summary of Financial Position

(IN \$ MILLIONS)

At the end of 2025, future revenues of \$37 million (2024 - \$45 million) were required to pay for past transactions or events.

Surplus funds have accumulated over the history of the City to \$688 million (2024 - \$646 million). Virtually all surplus funds, \$631 million (2024 - \$614 million), have been used to acquire or construct roadways, underground utilities, facilities, and other tangible capital assets used to deliver municipal services.



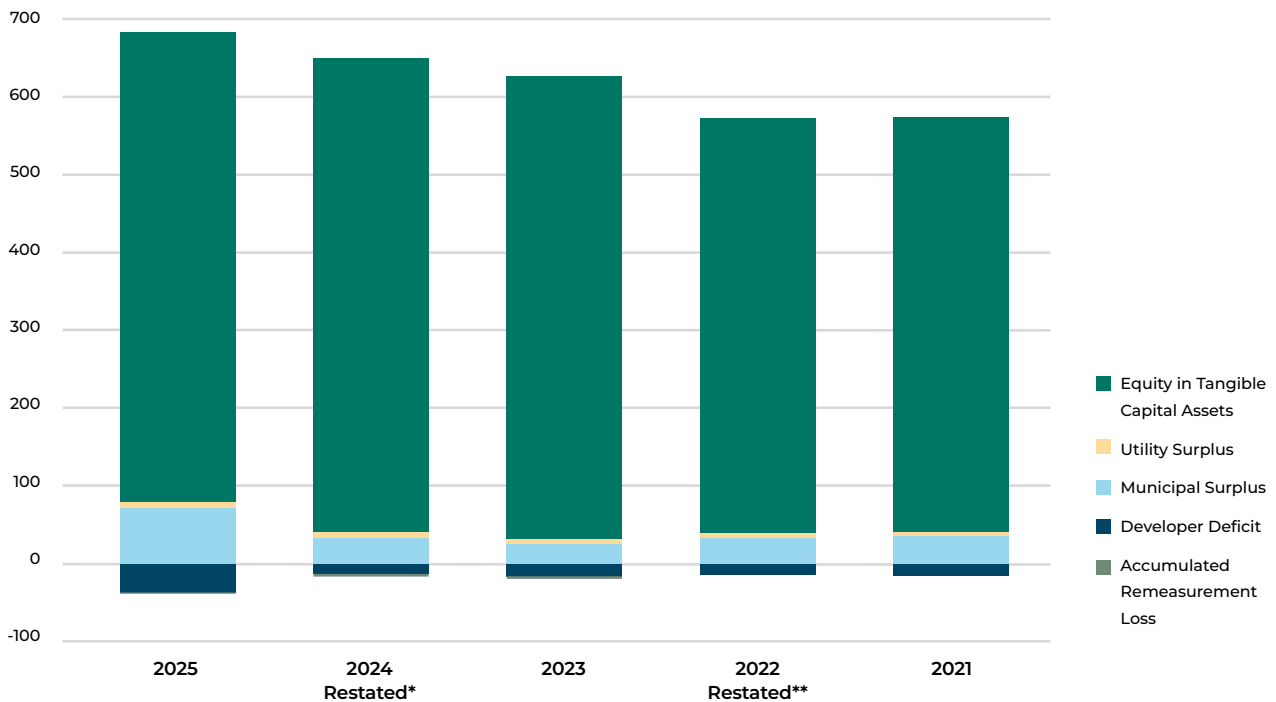
\*The City identified an error related to contributed land recorded in a prior period and applied a correction with restatement of prior year (2024) comparative information.

\*\*Effective January 1, 2023, the City adopted Canadian public sector accounting standard PS 3280 Asset Retirement Obligations, and applied the standard using the modified retroactive approach with restatement of prior year comparative information.

## Accumulated Surplus

The accumulated surplus of the City is \$688.4 million of which the investment in tangible capital assets represents \$631.1 million. The financial surplus position of the city is \$58.5 million or 8.5% of overall accumulated surplus. The financial surplus position has increased from 2024 to 2025, and the City remains within the Government Financial Officers Association recommended cash flow management and emergency preparedness range of two to three months of expense (\$22.0 to \$33.0 million). The current financial surplus position of \$58.5 million is made up of municipal surplus of \$76.8 million (2024 - \$36.7 million), utility surplus of \$12.1 million (2024 - \$8.3 million) and developer deficit of \$30.4 million (2024 - \$9.8 million). The increase in developer deficit represents the capital cost of infrastructure the City front ended to ensure land is available for immediate development.

### ACCUMULATED SURPLUS (MILLIONS)



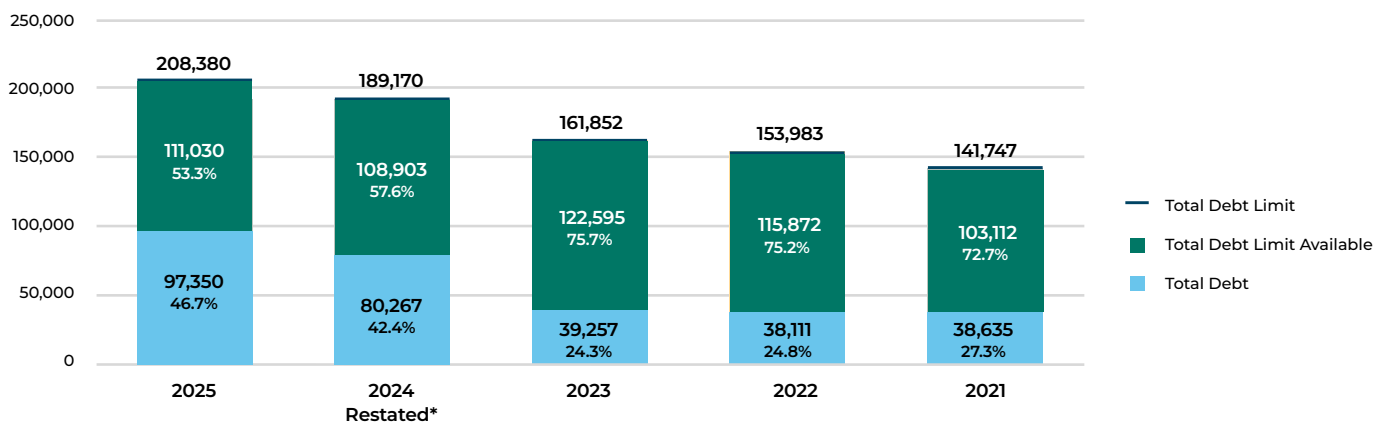
\*The City identified an error related to contributed land recorded in a prior period and applied a correction with restatement of prior year (2024) comparative information.

\*\*Effective January 1, 2023, the City adopted Canadian public sector accounting standard PS 3280 Asset Retirement Obligations, and applied the standard using the modified retroactive approach with restatement of prior year comparative information.

## Long-Term Debt

The actual long-term debt of the municipality is \$97.4 million in 2025, up from \$80.3 million in 2024. The allowable provincial limit of long-term debt under section 276(2) of the MGA for the City of Spruce Grove is \$208.4 million. By City policy, a self-imposed debt limit of 50 per cent of the provincial limit exists, at \$104.2 million. The City's 2025 borrowing balance of \$97.4 million is currently below both limits. Actual borrowing represents 46.7% of the provincial limit and 93.4% of the City's self-imposed limit.

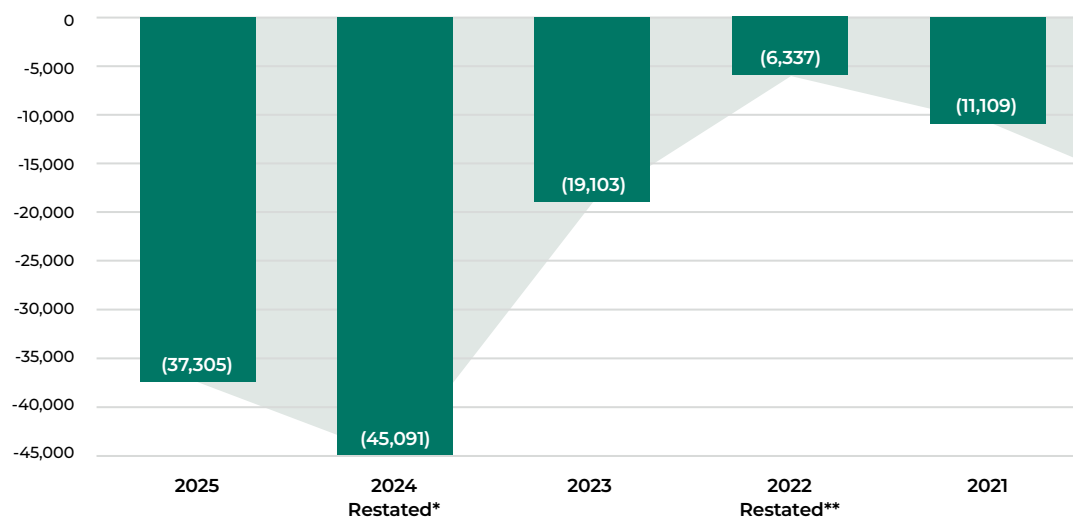
### DEBT LIMITS (THOUSANDS)



## Net Debt

The City of Spruce Grove's overall net debt position increased from the prior year end. Net debt was \$45.1 million at the end of 2024 compared to \$37.3 million by the end of 2025. However, the year end results came in better than the 2025 projected net debt of \$65.3 million, primarily attributed to lower than planned capital asset acquisitions in 2025.

### NET DEBT (THOUSANDS)



\*The City identified an error related to contributed land recorded in a prior period and applied a correction with restatement of prior year (2024) comparative information.

\*\*Effective January 1, 2023, the City adopted Canadian public sector accounting standard PS 3280 Asset Retirement Obligations, and applied the standard using the modified retrospective approach with restatement of prior year comparative information.

## Revenue Sources

The City of Spruce Grove's 2025 revenue of 172.3 million includes all revenue including property tax, sales and user fees, government transfers (operating and capital), contributed tangible capital assets, as well as other revenues such as investment income and gains or losses on the disposal of capital assets. Revenue sources are detailed below.

**2.9%**

### Government Transfers – Operating

Funds the City receives from the provincial and federal governments, as well as neighbouring municipalities which are used to fund for operating programs and activities.

**7.0%**

### Government Transfers – Capital

Funds the City receives from the provincial and federal government, as well as neighbouring municipalities which are used for the construction or acquisition of tangible capital assets.

**12.4%**

### Contributed Tangible Capital Assets

Items such as land, equipment, roadways and underground utilities (watermain, stormwater and sanitary sewer systems), which are constructed by developers and transferred to the City to own and manage.

**11.3%**

### Other Revenues

This includes rental revenue, penalties on taxes and utilities, investment income, gains or losses on disposal of tangible capital assets, developer contribution and levies, and other income.

**34.1%**

### Property Tax

Paid by Spruce Grove property owners to help cover the costs of the services they use within the City. Residents paid approximately 75.7 per cent of the total property taxes, while businesses paid the remaining 24.3 per cent.

**32.3%**

### Sales and User Fees

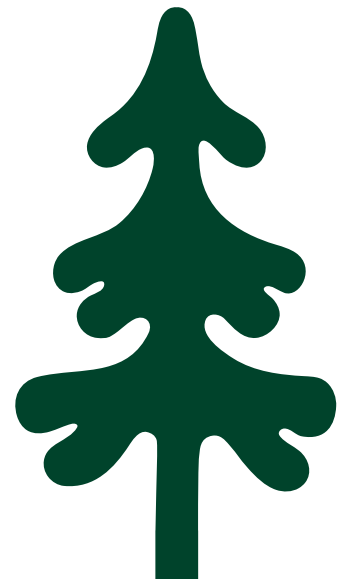
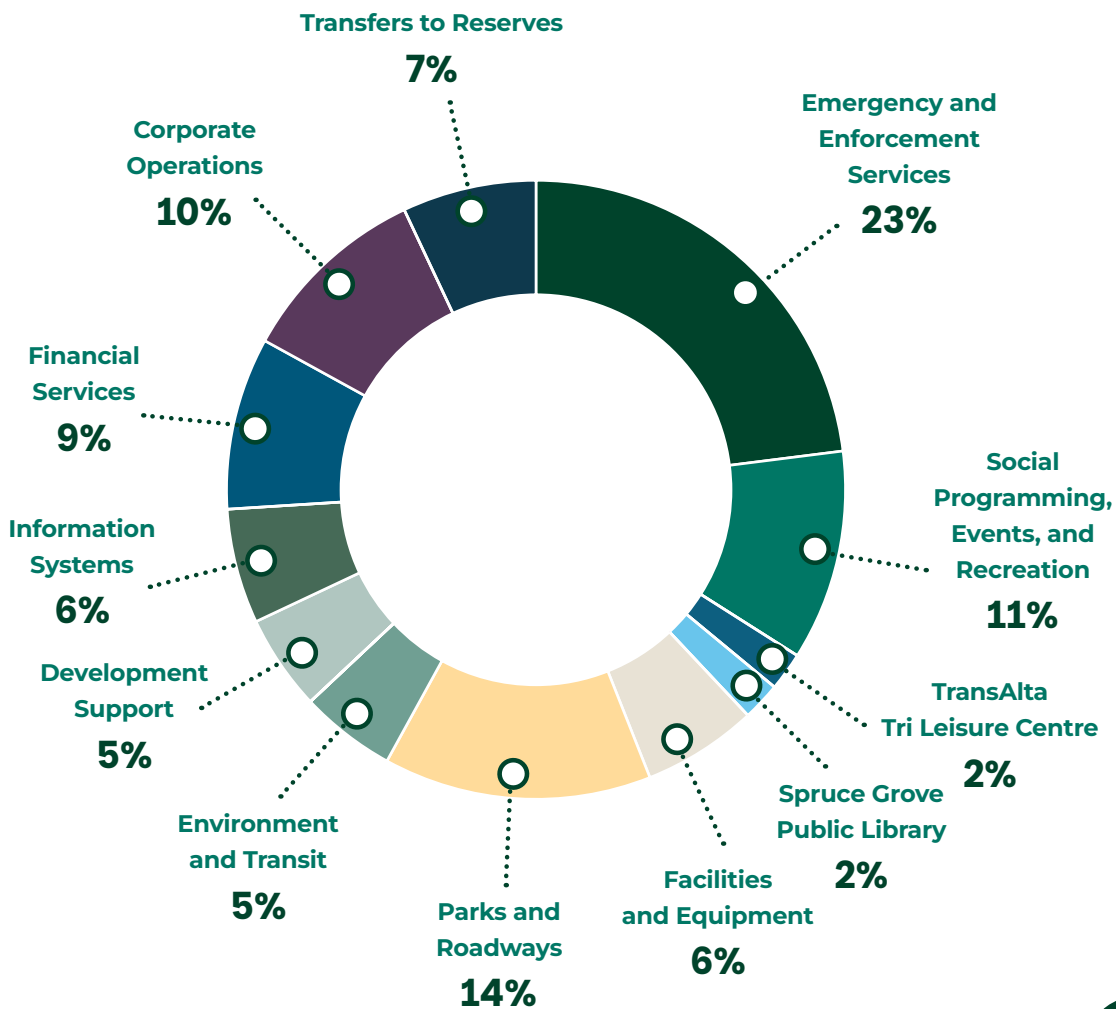
This includes sales to other governments, franchise fees, fines, licenses and permits.



The City also collects levies on behalf of the provincial government for education and on behalf of the Meridian Housing Foundation for local seniors housing. The City does not use this funding for operations and passes it directly on to the Province of Alberta and the Meridian Housing Foundation. The City does not set or control the amount of these levies.

## Where Your Tax Dollars Go

The municipal portion of your property taxes is based on the City's budgeted revenue requirements. This portion is retained by the City and is used to pay for amenities and services for residents and the community as a whole, such as roadways, public transit, public safety, parks and open spaces, programming, and much more! The distribution of tax dollars is illustrated in this chart.



## Expense By Function

The City of Spruce Grove's 2025 expenses of \$131.8 million by function are:

**3.5%**

### Development Services

Comprised of the functional areas identified below. Planning and Development manages long-term land-use planning, current land-use planning and subdivisions, development permits and safety code disciplines. Economic and Business Development is responsible for facilitating programs and services intended to help local businesses prosper and grow and attract new business and investment to the City.

**26.6%**

### Transportation and Roadway Services

Responsible for the planning, development, and maintenance of roadway systems. This function is comprised of the following areas: Engineering, Facilities and Fleet Management, Public Works and Transit.

**16.5%**

### Community Services

Provide recreation and culture services, deliver programs which promote the health and wellbeing of citizens, and engage in activities related to parks and cemetery maintenance and operation. This function is comprised of the following areas: Community Social Development, Recreation and Culture.

**20.9%**

### Utilities

Responsible for the construction, operation and maintenance of networks and facilities to support utility services in the following areas: Water, Sanitary Sewer, Stormwater, Solid Waste.

**15.6%**

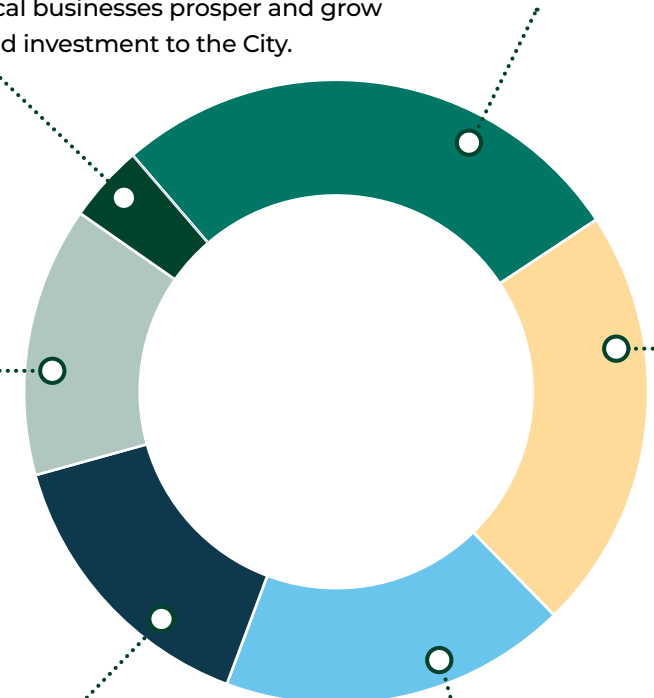
### General Government

Comprised of Council and General Administration. Council makes decisions regarding delivery and service levels on behalf of the municipality to balance the needs and wants of City residents in a financially responsible manner. General Administration is responsible for the administration of the municipality. This function is comprised of the following areas: Council, City Manager's Office, City Clerk's Office, Corporate Communications, Human Resources, Strategy and Policy Development, Business Advisory Services, Finance, Information Systems.

**16.9%**

### Protective Services

Exists to provide safety, security, peace of mind and a sense of wellbeing within the community for all residents, businesses and visitors. Exceptional emergency response is a key strength of the team which has led to consistently high performance when comparing safety data across other jurisdictions in the country. Building a diverse workforce, along with a strong commitment to community involvement, regional cooperation and providing training opportunities for all staff are key focuses of this department. This function is comprised of the following areas: Spruce Grove Fire Services, Enforcement Services and Safe City.

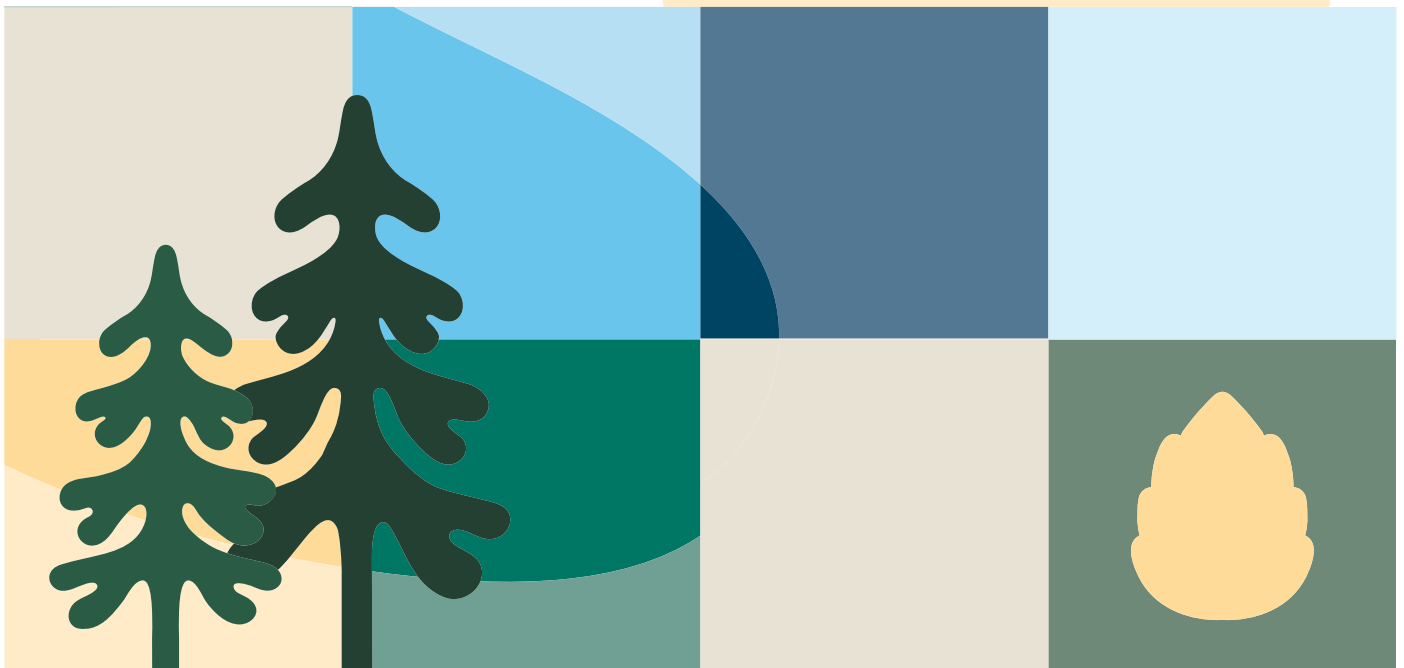


## Operating Results

Operating results in 2025 show a deficit of \$2.3 million before other capital items, significantly improved from the budgeted deficit of \$12.4 million. Higher than anticipated revenues were driven by increased activity in licensing and permitting, sales and user fees, government transfers, investment income, and one time items such as WCB recoveries and land sales. Expenses, while higher than 2024, were lower than budget mainly due to savings from staff vacancies and less than anticipated contracted and general services.

## Looking Forward

In 2026, the City will continue to provide sound fiscal stewardship, through evolving City processes, programs and services to support our growing city. The City is dedicated to investing in and serving our community.



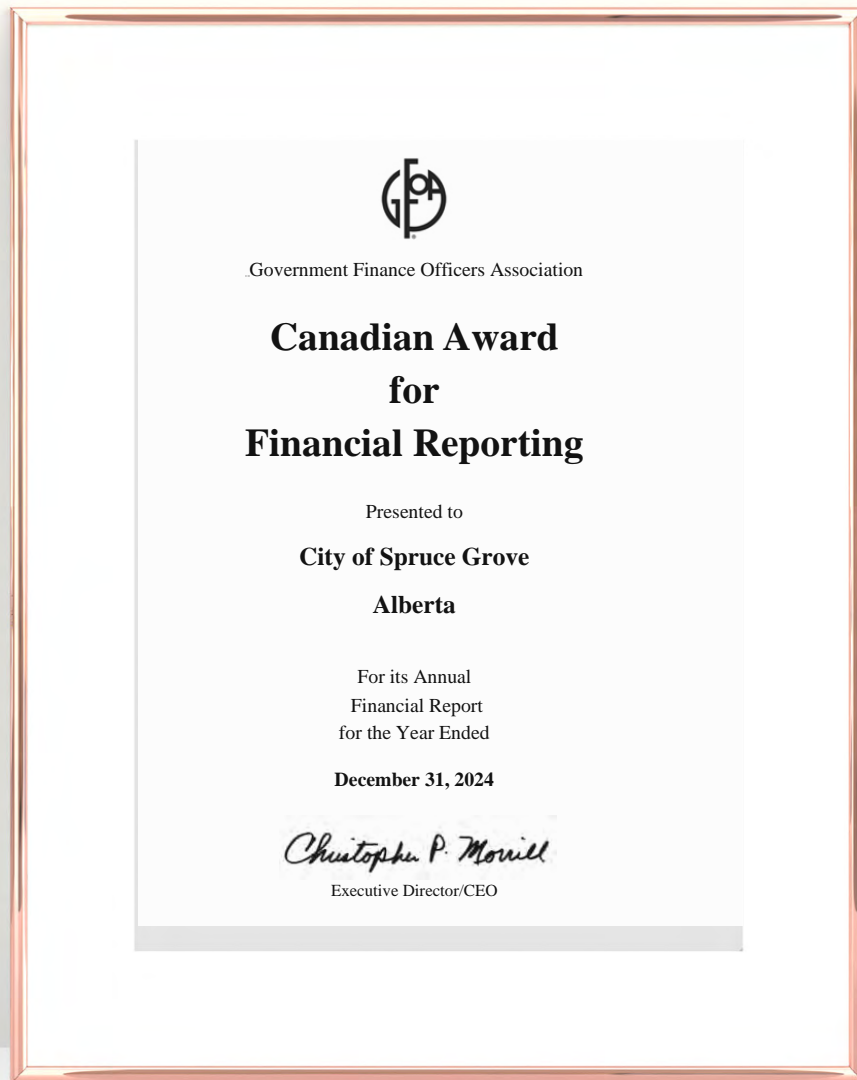
# Letter of Transmittal of the Annual Financial Report

Government Finance Officers Association of the United States and Canada (GFOA) awarded a Canadian Award for Financial Reporting to the City of Spruce Grove for its annual financial report for the fiscal year ended December 31, 2024. The Canadian Award for Financial Reporting program was established to encourage municipal governments throughout Canada to publish high quality financial reports and to provide peer recognition and technical guidance for officials preparing these reports.

In order to be awarded a Canadian Award for Financial Reporting, a government unit must publish an easily readable and efficiently organized annual financial report, whose contents conform to program standards.

Such reports should go beyond the minimum requirements of generally accepted accounting principles and demonstrate an effort to clearly communicate the municipal government's financial picture, enhance an understanding of financial reporting by municipal governments, and address user needs.

A Canadian Award for Financial Reporting is valid for a period of one year only. We believe our current report continues to conform to the Canadian Award for Financial Reporting program requirements, and we will be submitting it to GFOA to determine its eligibility for another award.





#### CITY HALL

315 Jespersen Ave.  
Spruce Grove, AB, Canada  
T7X 3E8

780-962-2611

Monday to Friday  
8:30 a.m. – 4:30 p.m.

[sprucegrove.org](http://sprucegrove.org)

#### FOLLOW US AND STAY INFORMED

 [sprucegrove.org](http://sprucegrove.org)

 [@sprucegrove](https://www.facebook.com/sprucegrove)

 [@cityofsprucegrove](https://www.instagram.com/cityofsprucegrove)

 [City of Spruce Grove](https://www.linkedin.com/company/cityofsprucegrove)

 [@CityofSpruceGrove](https://www.youtube.com/CityofSpruceGrove)



The City of  
**SPRUCE  
GROVE**