

# Understanding your 2026 Property Tax Notice

Each year in May, the City of Spruce Grove sends tax notices to Spruce Grove property owners. This notice includes your municipal property tax levy, as well as levies the City collects on behalf of other organizations for education and seniors' affordable housing.

## Property taxes fund City services and amenities

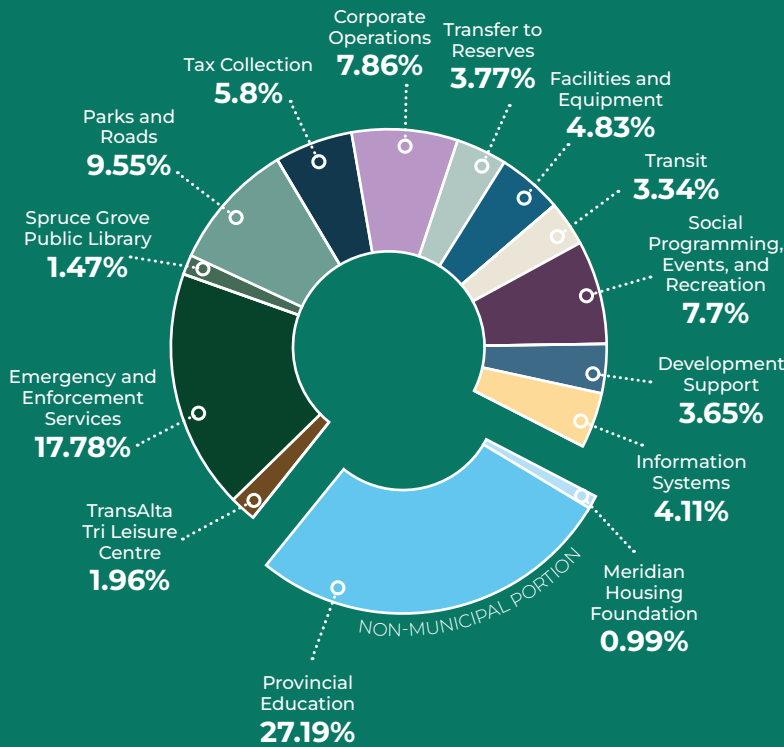
The City's interim 2026 municipal budget was approved by City Council in the fall of 2025 as part of the 2026-2028 Budget and Fiscal Plan. Council approved the final 2026 budget on April 13, 2026, with the Spring Budget Adjustment. This budget funds all the services the City offers, such as roads, public transit, public safety, parks and open spaces, programming, community amenities, and much more! The costs of providing these services are shared by property owners through the municipal portion of your property taxes and are allocated based on property assessment value.

## How property taxes are calculated

Earlier this year, you received your 2026 property assessment notice that outlined the total assessed value of your property. Assessment values are based on the provincially legislated valuation date of July 1, 2025, and the physical condition of a property as of December 31, 2025. The amount of property tax you pay is based on this assessed value.



## WHERE DO YOUR TAX DOLLARS GO?



## Municipal portion of property taxes

The municipal portion of your property taxes is based on the City's budgeted revenue requirements. This portion is retained by the City and is used to pay for amenities and services for residents and the community as a whole.

## Non-municipal portion of property taxes

Your tax bill also includes levies the City collects on behalf of the Government of Alberta for education\* and the Meridian Housing Foundation\*\* for senior living. Taxpayers are required to pay these amounts whether or not they use the services.

### \*Education taxes

The Alberta Education Levy and the Evergreen Catholic School Levy are collected on behalf of the Government of Alberta for education. The City of Spruce Grove does not set or control the requisition amount.

The Government of Alberta has adopted a new strategy to structure provincial property taxes to generate tax revenue that is equivalent to one-third of the operating cost for the Ministry of Education by 2026-2027. To meet this goal, the Province is increasing the provincial tax by 15% on residential, farmland and non-residential properties in 2026-2027. The table to the left provides an example of how this increase impacts property owners for every \$1,000 of assessed property value.

Visit [alberta.ca/Education-Property-Tax](https://alberta.ca/Education-Property-Tax) to learn more.

### \*\*Meridian Housing Foundation

The City of Spruce Grove, Town of Stony Plain, and Parkland County are all required to collect taxes set by the Meridian Housing Foundation to contribute to seniors' living facilities.

For details, visit [sprucegrove.org/YourPropTaxBill](https://sprucegrove.org/YourPropTaxBill).

### Government of Alberta Education Levy Breakdown

Property Type	2025 Alberta Education Levy	2026 Alberta Education Levy	\$ Difference (per \$1,000 of assessed value)
Residential	\$2.72	\$2.84	\$0.12
Non-Residential	\$4.00	\$4.17	\$0.17

**Questions?** Call 780-962-7634 ext. 119  
Email [propertytaxes@sprucegrove.org](mailto:propertytaxes@sprucegrove.org)  
Visit [sprucegrove.org/PropertyTax](https://sprucegrove.org/PropertyTax)

