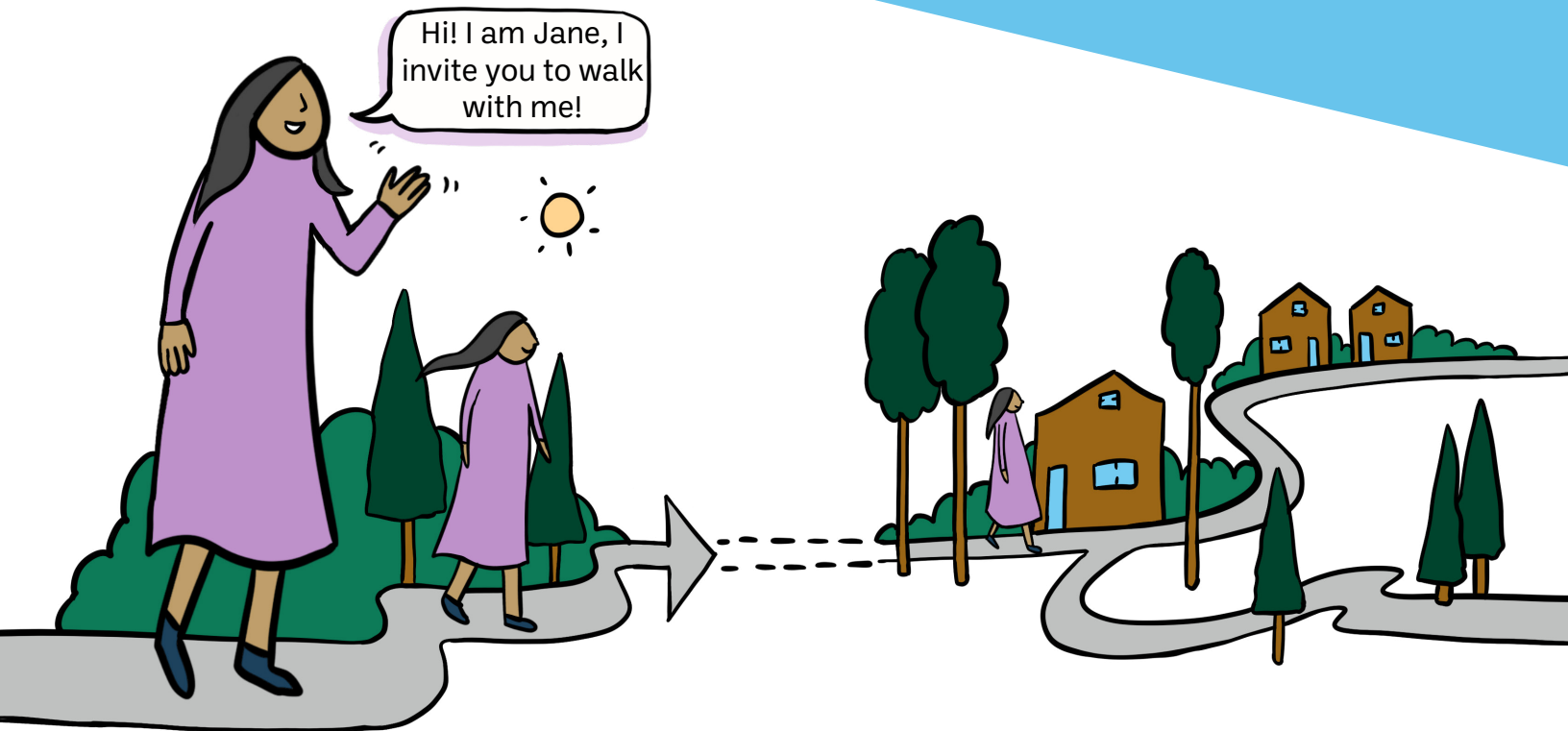




The City of
**SPRUCE
GROVE**

Social Impact Report 2025



Domestic Violence/Abuse

Mental Health and Addictions

Community Connection and Belonging

Basic Needs

Living Without Shelter

↑ PRIMARY
↓ SECONDARY
↑ TERTIARY
↓ LEVEL OF PREVENTION

200 participants
Missing and
Murdered Indigenous
People Walk

320 participants
in the
Uproot Abuse Campaign
+ 55 participants in
A Community
Empowered

Supported access to
\$43,200 of Housing
Benefit for Survivors of
Gender-Based Violence
rental supplements

Over 300 Hours
of Grant Funded
Domestic Violence
services

Launch of the
Safe Spaces
Program for
older adults

Completed a financial
review for person who
was seeking support
leaving an abusive
situation
received \$10,000+
retropay
increased income
by \$250/
month

Signing and
participation in the
Tri-Region Trauma,
Violence and
Suicide Prevention
Protocol

97%
of participants
are more confident
in supporting
someone
at risk

Supported 295
Counselling
Hours

Coordination
of Supports

Including
supporting
connections
among ~30 local
agencies through the
long-standing
Critical Connections
Interagency
meeting

ASIST
START
SafeTALK

Supported
1300+
community
programming
hours

Talking Circles
participation
has tripled
since 2022

207 Youth
Engagement
through
Community for
Youth Equity

166 Attended
International Day
of Persons with
Disabilities

An increase of
33% from last year,
totalling
2000 hours
of volunteering,
practicum
students, and
resident leadership
in projects

95% reported
an increased
understanding of
poverty in their
community

67
participants
Pathways to
Poverty

Community
Volunteer
Income
Tax
Program

\$7.1 million
returned to the
community vs
\$6.9 in 2024

35% increase in number
of block parties hosted
compared to 2024

112
Individuals
received
Financial Housing
Breakdown
Support

Connection
to 230+ unique
resources by
front line
teams

18,000+ Direct
Resident Support
(up from 16,000 in
2024)

21 participants
Regional Food
Table

Home
Support

2025:
956
Hours
2024:
856
Hours

100% strongly
agree the program
helped them reside
independently

47 nights
Winter
Emergency
Response in
the 2024-2025
season

Spruce Grove resident
who had been
chronically homeless
for over 6 years has
successfully maintained
housing for a year

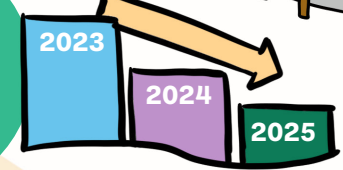
Outreach team provided
224 supports to help
them remain housed

100 hours to
administer the
Housing Needs
Assessment

Community
Outreach Video
Series launch
with 11,000+
views promoting
awareness

including
completing 500+
surveys with
residents

70% reduction
in homelessness
or social
disorder related
enforcement
files



293 housing
sustainability
support
resources
accessed

\$52,000+ in
one-time
benefits for 18
households,
increasing
average monthly
income by \$600+

4768
instances of
support to 231
people from
ages 16-73



CASE STUDY

Projects We Are Looking Forward to in 2026

Kickstand Integrated Youth Services

We are excited to announce the upcoming launch of Kickstand this April. Designed to support young people ages 11–25, this initiative is the result of strong community collaboration, with multiple partner organizations coming together to offer coordinated supports and services in one centralized location.



Community Connection and Engagement

Upcoming work to support community connection and belonging includes the launch of Connection Cultivators, alongside a separate community survey designed to gather resident input on neighbourhood connection and experiences of belonging.



Streamlined Access to Services

Continued work to ensure residents can connect with the right supports with a goal of reducing residents having to navigate multiple systems on their own. This includes work to streamline the screening processes for subsidy programs, and enhancements to the departments data tracking system to align with the new FCSS provincial outcomes.



Bridging Connections – Expanded Community Support

Bridging Connections will expand its services with the addition of a Community Navigator. This new role will focus on information, referral, and system navigation, helping residents better understand available supports and access the services best suited to their needs. The Community Navigator will be present in Parkland County, increasing access to support beyond the Spruce Grove CSD office.

Existing Bridging Connections services will remain unchanged, including drop-in support Monday to Friday at the Spruce Grove CSD office, as well as weekly in-person at the Parkland County FCSS office in Wabamun and the Entwistle Community Recreation Centre.

Community Social Development

414 King Street
Spruce Grove, Alberta T7X 3E8
Phone: 780-962-7618
Email: csd@sprucegrove.org