



MID-YEAR REPORT

FOR THE PERIOD ENDED
JUNE 30, 2025





TABLE OF CONTENTS

3 Trending Data

Building Permit Activity	3
Permit Processing Times	4
Transit Ridership	5
Economic Activity	6
Emerging Social Needs	7
Protective Services Statistics	8
Solid Waste Collection Statistics	9
Customer Experience	9
Social Media and Website Statistics	11

12 Strategic Plan Updates

Community Connections	12
Environmental Sustainability	22
Economic Prosperity	25
Governance In Action	26

30 Financial Highlights

Operating Summaries	30
Investment Reporting	32
Capital Summaries	33

34 Financial Statements

Operating Summaries	34
Capital Summaries	38



TRENDING DATA

The information provided in this report is “as is” and “as available” at the time of publishing. The City of Spruce Grove cannot guarantee its accuracy or completeness.

Building Permit Activity

Building permit activity set a new record in the second quarter of the year, with a total of 365 permits issued, valued at over \$90 million—the highest numbers recorded for this period in the last 10 years.

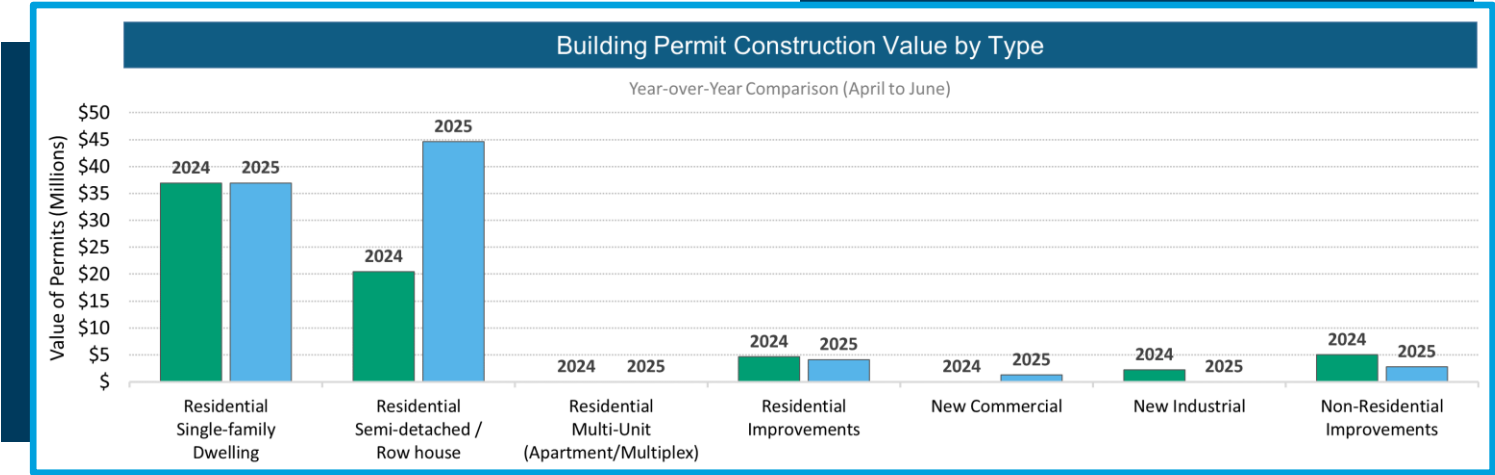
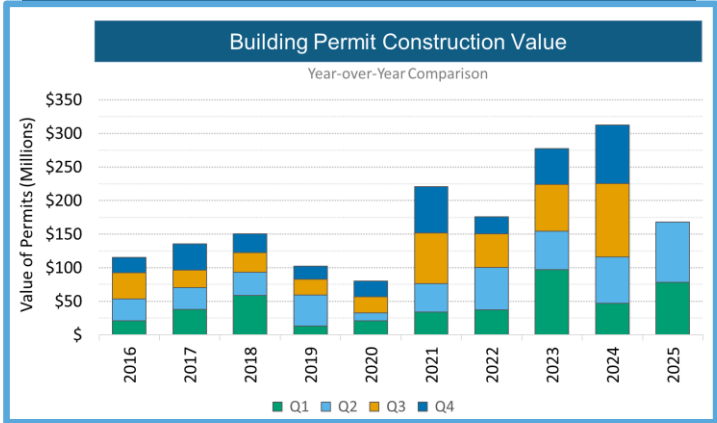
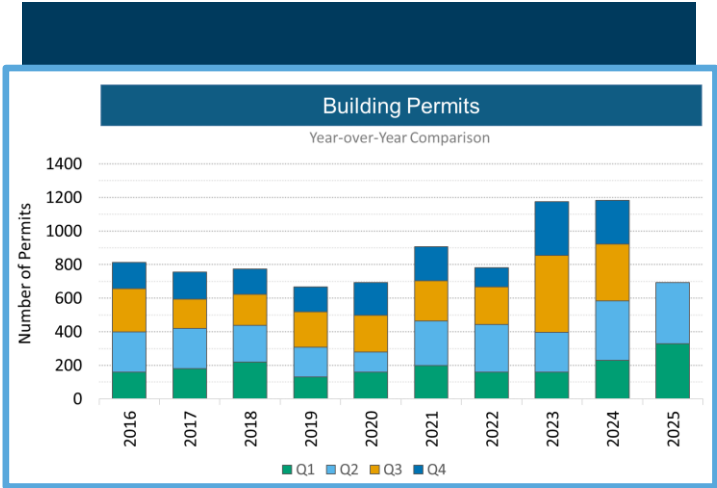
The number of permits issued increased by 3.7 per cent from the same time period last year, while the construction value of permits increased 30 per cent from the same time period last year.

Building permits were issued for 309 new dwelling units in the second quarter compared to 211 in 2024 from the same time period, a 46 per cent increase.

Construction value of permits in the second quarter was largely driven by residential semi-detached and row house construction. The construction value in the residential semi-detached and row house category was 118 per cent higher in the second quarter of 2025 when compared to the same quarter of 2024.

Residential improvement permits saw a 7 per cent decrease when compared to the same time period last year, with 182 permits in the second quarter.

There has been no building permit activity in the second quarter related to new industrial construction and residential multi-units. There were 15 permits issued related to non-residential improvements, valued at just under \$3 million.



Permit Processing Times

The permit processing time data represents the average processing time in business days for residential new construction building and development permits. The data provides insight into the efficiency of permit services and creates transparency around permit processing times.

Permit processing time is calculated from the date a building or development permit application has been deemed complete and paid for to when the building permit is issued or the development permit is approved. Any wait times due to revisions and other permit dependencies are subtracted from the processing time. The average processing time is calculated for all permits issued in the quarter for each category.

The average processing time for single detached building permits was 2.9 days in the second quarter, down from 7.8 days in the first quarter, while for development permits it was 4 days, down from 6.8 days.

The average processing time for semi-detached building permits was 3 days in the second quarter, down from 7 days in the first quarter, while for development permits it was 4.1 days, down from 8.2 days.

The average processing time for row house building permits was 7.3 days in the second quarter, up from 5.5 days in the first quarter, while for development permits it was 6.6 days, down from 8.3 days.



Transit Ridership

On-Demand Local Service



On-demand transit service ridership increased by 15 per cent when compared to the second quarter of 2025, with 18,656 riders in the second quarter of 2025.

Within the entire region, there was an average of 268 passenger trips per weekday in the second quarter of 2025, compared to an average of 238 passenger trips in the second quarter of 2024. For the Saturday service, including Stony Plain, there was an average of 157 passenger trips.

In January, on-demand transit Saturday service expanded to include Stony Plain. You can learn more about the on-demand transit service expansion on [page 12](#).

Commuter Service

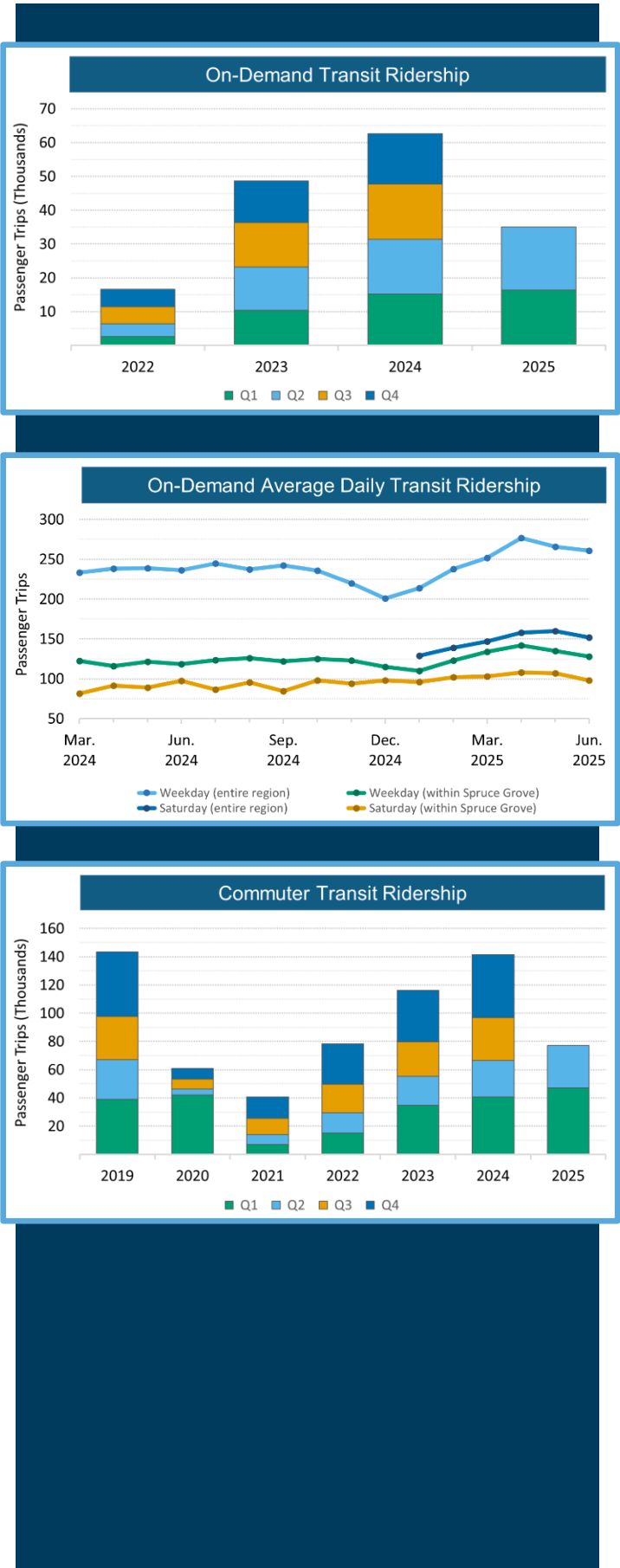


The second quarter saw 29,802 riders on the commuter service, an increase of 16 per cent when compared to the same time period last year. The number of riders in May through August typically sees a significant drop

in ridership due to post-secondary students not using the service.

Transit Survey

In late 2024, the City conducted a transit survey, inviting both transit users and non-users to share their thoughts on the transit system. You can learn more about the highlights of the transit survey results on [page 28](#).



Economic Activity

Commercial and industrial vacancy rates

The vacancy rate in the total retail sector held steady at 2.7 per cent in June, while the vacancy rate in the small retail sector saw a slight increase to 5.3 per cent, up from 4.7 per cent in March. The vacancy rate in the office sector decreased slightly to 2.8 per cent from 3.4 per cent in March. The vacancy rate in the industrial sector held steady at 1.2 per cent and remains near historical lows.

Commercial and industrial vacancy rates are an important indicator of the health of the local economy. Low vacancy rates in these sectors are a strong positive factor for investors because they indicate a favourable economic climate.

Labour Force Trends¹

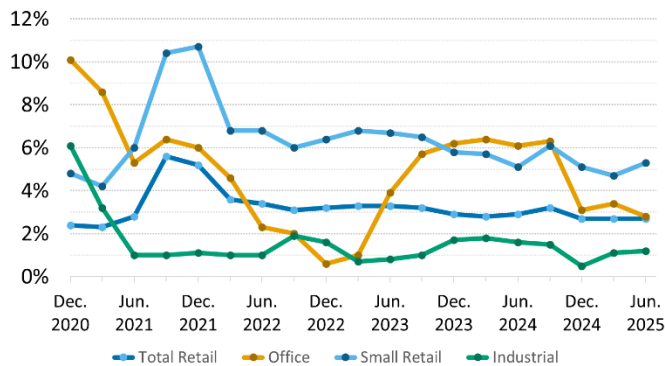
Alberta led the provinces with a net gain of 30,000 new jobs—its largest increase since December.

The Edmonton region's unemployment rate increased slightly to 7.5 per cent in June, up 0.3 percentage points from March. Alberta's unemployment rate decreased to 6.8 per cent in June, down 0.3 percentage points from March. The unemployment rate across Canada increased slightly to 6.9 per cent, up 0.2 percentage points from March.

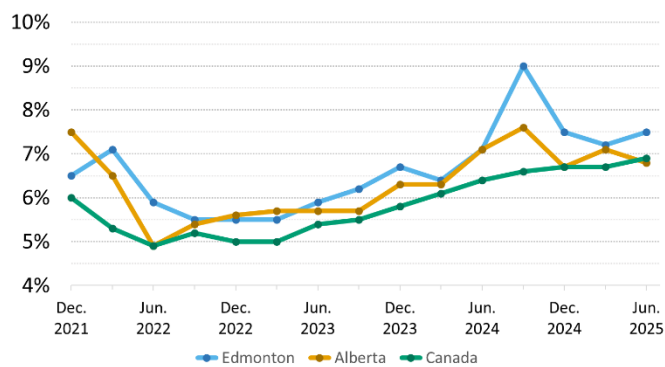
The Edmonton region's participation rate decreased slightly to 67.8 per cent in June, down 0.2 percentage points from March. Participation rate measures the total labour force (comprised of those who are employed and unemployed) relative to the size of the working-age population.

Alberta's participation rate increased to 68.7 per cent in June, up 0.4 percentage points from March. The participation rate across Canada increased slightly to 65.4 per cent, up 0.2 percentage points from March.

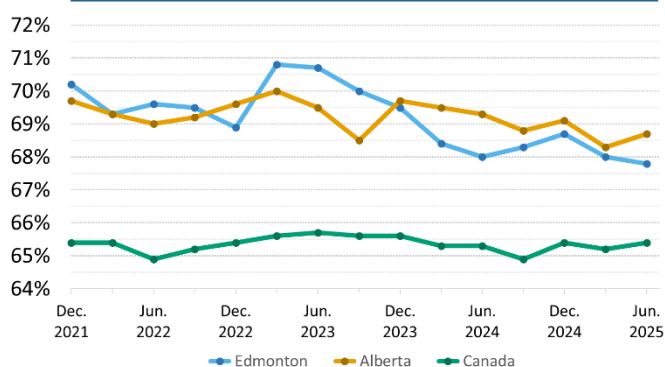
Commercial & Industrial Vacancy Rates



Unemployment Rate



Participation Rate



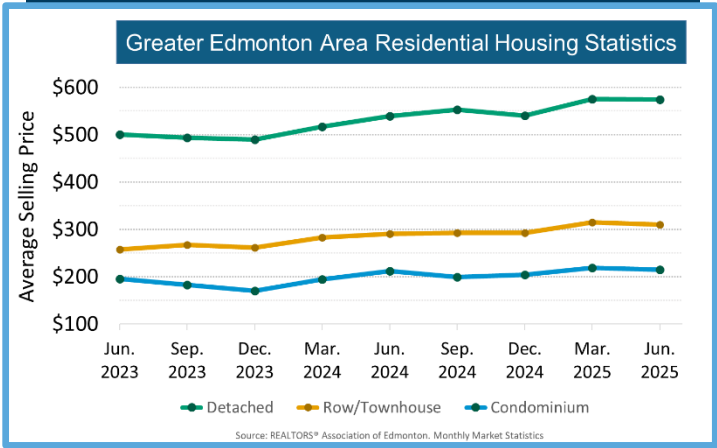
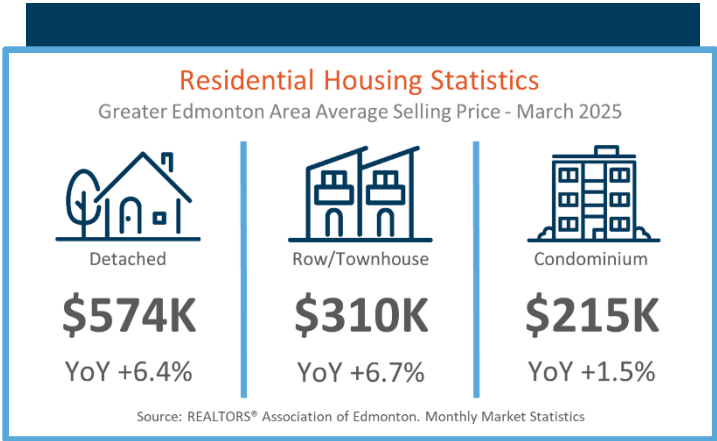
¹ Statistics Canada. Table 14-10-0287-03 Labour force characteristics by province, monthly, seasonally adjusted
<https://www150.statcan.gc.ca/t1/tbl1/en/tv.action?pid=1410028703>

Residential Housing Statistics¹

According to the market statistics from the Realtors Association of Edmonton, average selling prices in the Greater Edmonton Area have slightly decreased for detached homes, row/townhouses, and condominiums since the last quarter. When comparing year-over-year prices, however, the prices increased in those same categories.

The average selling price for detached homes in the Greater Edmonton Area in June 2025 was \$574,097, a 6.4 per cent year-over-year increase and a March-to-June decrease of 0.1 per cent.

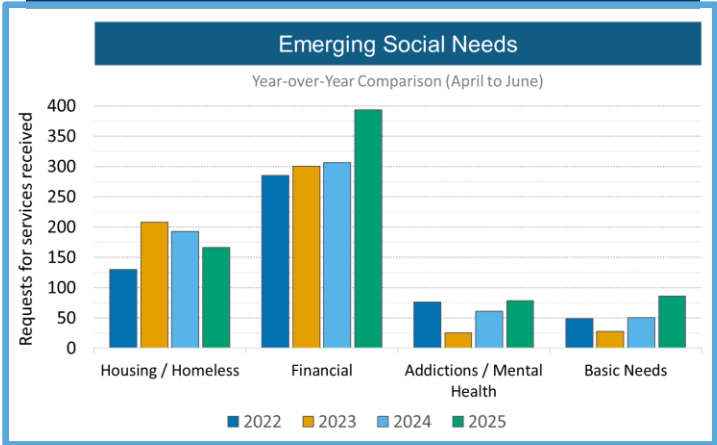
Row/townhouse prices averaged \$309,811, seeing an increase of 6.7 per cent year-over-year and a decrease of 1.6 per cent when compared to March. Condominiums sold for an average of \$214,789, seeing an increase of 1.5 per cent year-over-year and a decrease of 1.5 per cent when compared to March.



Emerging Social Needs

The chart represents the most common requests for service received by Community Social Development including navigation, information and referral from new and existing clients as supported through the Bridging Connections program.

In the second quarter, requests related to financial assistance saw a 29 per cent increase when compared to the same time period last year. Assistance to access financial support continues to be the most requested service with 393 requests.



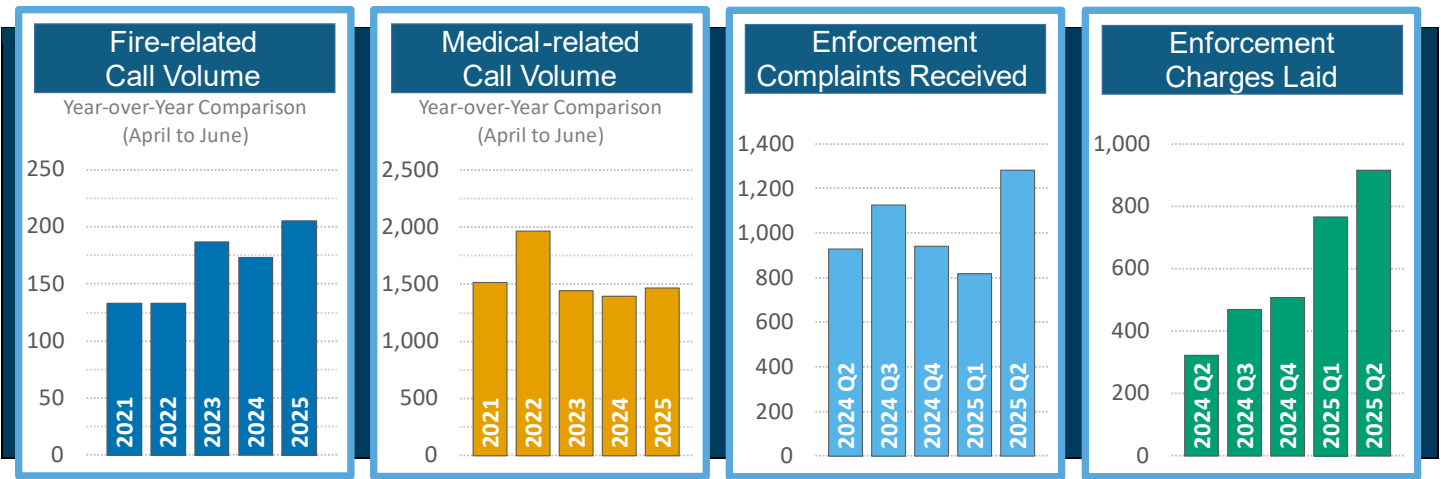
¹ REALTORS® Association of Edmonton, Monthly Market Statistics, <https://realtorsofedmonton.com/stat-type/monthly-market-statistics>

Protective Services Statistics

The charts below represent the call volumes related to fire and medical calls as well as enforcement complaints received and charges laid. Enforcement complaints and charges laid represent both citizen-initiated and officer-initiated.

Fire-related call volume increased 18 per cent in the second quarter of 2025 when compared to the same time period in 2024. Medical-related call volume increased by 5 per cent in the second quarter of 2025 when compared to the same time period in 2024.

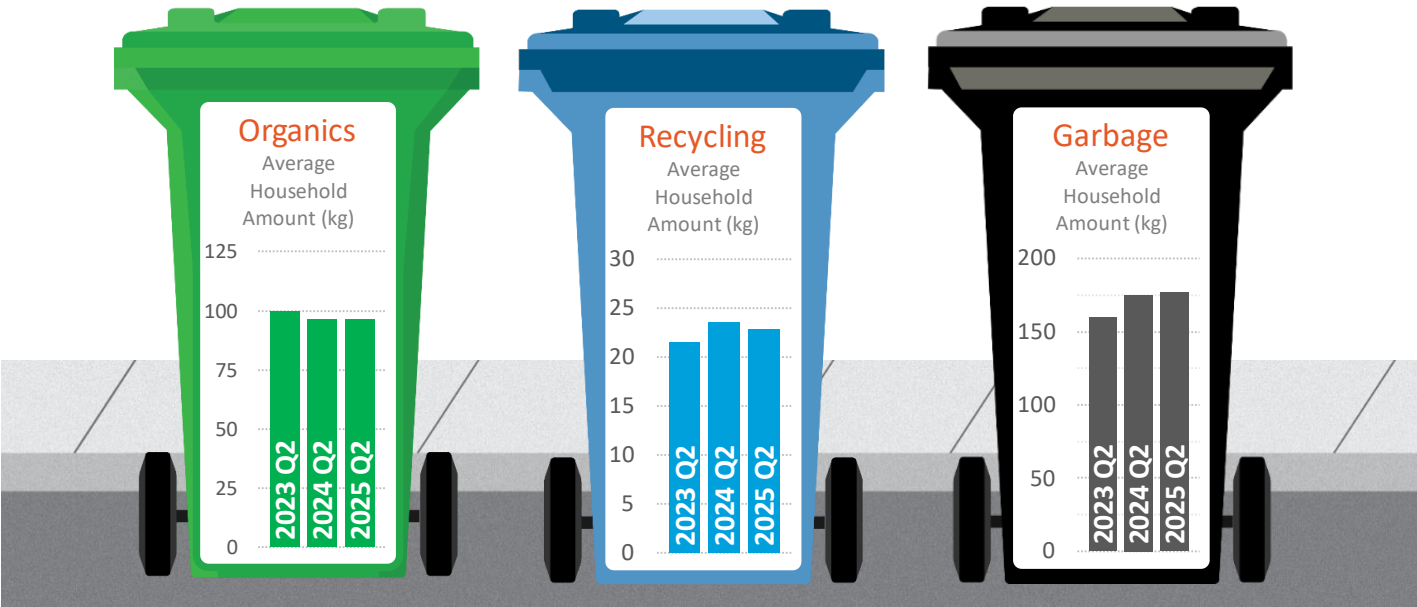
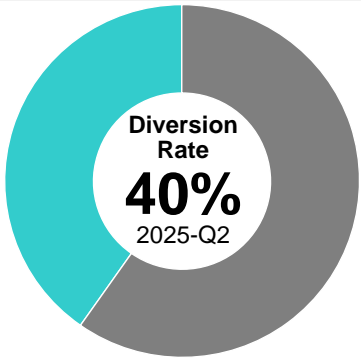
The number of enforcement-related complaints increased by 54 per cent in the second quarter when compared to the first quarter and is 38 per cent higher when compared to the second quarter of 2024. The number of enforcement charges increased by 19 per cent in the second quarter when compared to the first quarter.



Solid Waste Collection Statistics

The charts below represent the year-over-year comparison (April to June) of the average household curbside solid waste collected in kilograms (kg) for each of the three streams. Between April and June 2025, on average, the City collected 96 kg of organics, 23 kg of recycling, and 177 kg of garbage from each household.

The waste diversion rate for the second quarter of 2025 is 40 per cent. Waste diversion rates fluctuate through the seasons and the rate is typically the lowest in the winter months as there is no yard waste. Waste diversion represents the proportion of waste diverted from the landfill and is calculated by dividing the amount of organics and recycling by the total waste collected.

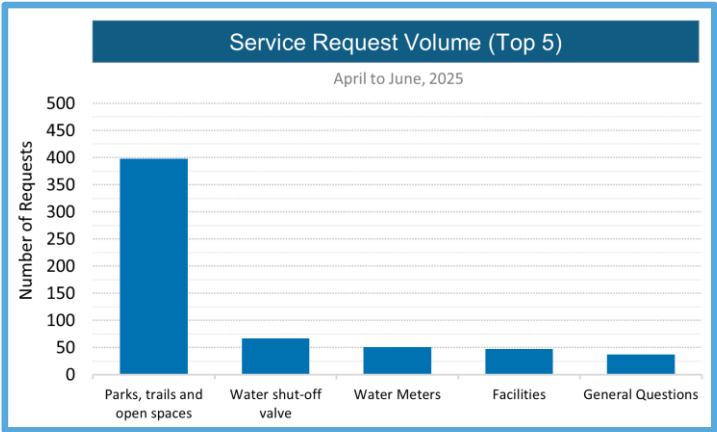


Customer Experience - Issue Reporting

The City offers several convenient ways residents and business owners can report issues and request service.

The data represents the most common requests for services received by the City either through the self-service online portal, email, through the phone, or in-person for common, non-emergency issues related to City services and property. This data provides insight into the overall pattern of service requests and demand for services.

In the second quarter, the City received 959 non-waste related service requests. The top 5 request categories included 398 requests related to parks, trails and open spaces, 67 requests related to water shut-off valves, 51 requests related to water meters, 47 requests related to facilities, and 37 general questions.



For more information on how to report an issue or submit a request, visit sprucegrove.org/OnlineTools.

Customer Experience - Waste Related Requests

In the second quarter, the City received 1,064 waste related requests. This included 457 requests related to damaged waste carts, 157 requests for waste cart deliveries, 415 requests related to missed waste collection, and 35 other waste related requests.

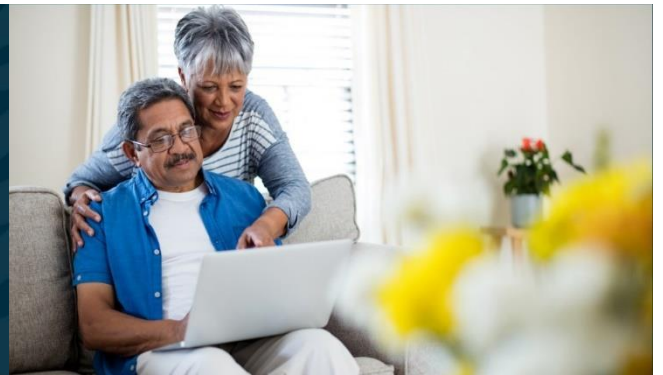
In the fall of 2023, the City began using the current service request system to track and respond to all waste related requests, providing a quicker, easier and more convenient way to report damaged carts, missed waste collection, or other issues.



ACCESS ONLINE TOOLS

To complete common tasks online 24/7

sprucegrove.org/OnlineTools



Spruce Grove residents and businesses now have access to [Online Tools](https://sprucegrove.org/OnlineTools), a convenient place to look and find all the ways you can complete common tasks and report non-emergency issues to the City. From accessing permitting tools and tax information, to reporting a crime or missed waste collection, there are a lot of ways for you to self-serve online.

Reporting Dashboard

The City's reporting dashboard provides key data to monitor and share important information about the community and the City's programs and services.

The dashboard includes data related to population and demographics, development and construction, local economy, community safety, social media, environment and transit.

The dashboard is updated quarterly and displays historical data trends.

To view the Reporting Dashboard, please visit sprucegrove.org/Dashboard.



Social Media and Website Statistics



435,841

Q2 Website Visits

(+21% over 2024 Q2)



16,939

Followers

(+6% over 2025 Q1)



5,904

Followers

(+7% over 2025 Q1)



6,579

Followers

(+6% over 2025 Q1)

FOLLOW US AND STAY INFORMED



sprucegrove.org



@sprucegrove



@cityofsprucegrove




City of Spruce Grove

The most engaging Facebook post of the second quarter

Our most engaging Facebook post from the second quarter came in early May and was about highlighting a very special part of Heavy Metal Place.

The Cst. Brett Ryan Community Arena is named in honour and memory of fallen Edmonton Police Service constable and Spruce Grove resident Brett Ryan who lost his life in the line of duty while responding to a call for assistance on March 16, 2023. Brett was an avid hockey fan, referee, and mentor who loved being at the rink and giving back to his community. The Cst. Brett Ryan Community Arena will help to ensure his legacy and sacrifice is recognized and remembered for generations to come. Learn more about Heavy Metal Place at sprucegrove.org/HeavyMetalPlace.


City of Spruce Grove - Your Local Government's post


City of Spruce Grove - Your Local Government

May 2 · 🌐

Just over a week to go until we welcome the community inside Heavy Metal Place, and today we're highlighting a very special part of this new facility.

The Cst. Brett Ryan Community Arena is named in honour and memory of fallen Edmonton Police Service constable and Spruce Grove resident Brett Ryan who lost his life in the line of duty while responding to a call for assistance on March 16, 2023. Brett was an avid hockey fan, referee, and mentor who loved being at the rink and ... [See more](#)





At the end of the second quarter, there were 1,365 subscribers to the CityPulse bi-weekly e-newsletter, representing a 4 per cent increase from the end of the first quarter. The bi-weekly e-newsletter provides timely updates on City news, projects, and events. To subscribe to the e-newsletter, please visit sprucegrove.org/CityPulse.

11

2025 Mid-Year Report

Community Connections



Winter Fun on Spruce Grove's Outdoor Ice Surfaces



Outdoor skating is a cherished winter activity in Spruce Grove, offering residents and visitors a variety of ice surfaces to enjoy during the colder months. The City maintains several outdoor skating facilities, including three outdoor skating rinks, three skating ovals, and three leisure ice surfaces. These facilities are free to use and are not scheduled, allowing for spontaneous skating sessions. Whether getting some exercise, practicing spins, or shooting a puck with friends, there was an option for everyone.

Outdoor ice surfaces first opened on December 13 and were closed by February 24. Residents were able to check the status of the ice surfaces online before planning a visit at sprucegrove.org/Ice.

Expanding Saturday On-Demand Transit Service

On January 4, on-demand transit Saturday service expanded to include Stony Plain. The service expansion provides residents with greater flexibility and accessibility for their weekend travel needs.

The expanded Saturday on-demand transit service operates from 8 a.m. to 10 p.m., allowing passengers to travel between any two bus stops within Spruce Grove and Stony Plain.

For more information on on-demand transit services, including fare details and stop locations, please visit sprucegrove.org/Transit.



Staying Active Outdoors: Winter Walk Day



Residents of Spruce Grove embraced the chilly winter weather for the annual Winter Walk Day which took place on February 5. Winter Walk Day is an annual event aimed at encouraging residents to embrace outdoor physical activity during the winter months. The event has been a tradition since 2006 in Alberta, with over 800 organizations and 100,000 individuals participating annually across the province.

In a message leading up to the event, Spruce Grove Mayor Jeff Acker encouraged residents to participate in Winter Walk Day, highlighting the importance of outdoor activity for overall health.

Photovoice Program: Empowering Youth Through Photography



Twenty youth registered for the Photovoice program which ran from January 30 to March 20. The program empowers local teens to share their thoughts, experiences, or ideas through photography and storytelling. This helps them tell their story in a creative way, making it easier for others to understand what's important to them.

Over several weeks, participants engaged in sessions where they learned photography techniques, discussed themes relevant to their lives and community, discovered ways to use photos to tell powerful stories, and finally showcased their photos and shared the stories behind them with friends, family, and the community.

The City worked with the Community for Youth Equity (C4YE) who invited youth to participate in the program. C4YE, a team of youth-focused organizations, is exploring ways to support Spruce Grove in being a more diverse, equitable, and inclusive community. The Photovoice program is a partnership between the City of Spruce Grove and Alberta Health Services with a goal to support and prioritize the needs of youth.

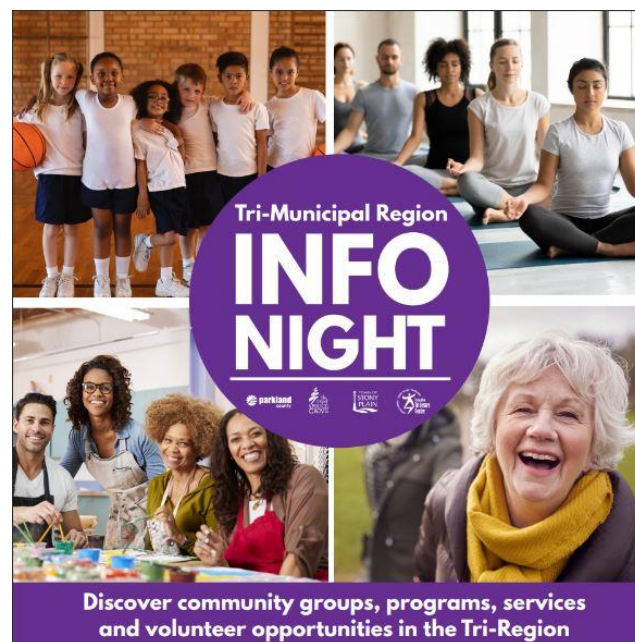
Tri-Municipal Region Spring Info Night

The Tri-Municipal Region Spring Info Night event was held on February 20 at the Heritage Park Pavilion in Stony Plain, drawing over 230 attendees. A total of 58 registrations were received for the Info Night, including nine businesses and 49 non-profit organizations.

Survey results indicated that the main benefits for community organizations and businesses included increasing awareness of their programs and services, networking and making connections.

The event provides community organizations and businesses an opportunity to showcase and promote their programs and services related to recreation, sport, wellness, culture, art, and heritage. Attendees can gather information, register for programs, explore volunteer opportunities, and support fundraising initiatives.

This event is hosted by the Tri Municipal Region partners and is free and open to the public.



Spruce Grove's Free Income Tax Program

In the months of March and April, volunteers contributed over 300 hours to the Spruce Grove Tax Clinic, helping residents access free tax preparation services.



This vital initiative is part of the Community Volunteer Income Tax Program (CVITP), a partnership with Canada Revenue Agency (CRA) that offers complimentary tax support to individuals who may face barriers to filing independently or affording professional assistance.

Operating year-round, the Spruce Grove Tax Clinic delivers virtual services through a dedicated team of registered and trained volunteers.

This program is one of the many ways the City demonstrates its commitment to building a supportive, inclusive community where residents have access to the essential services they need to enhance their financial well-being.

Learn more at sprucegrove.org/IncomeTaxProgram.

Winter Emergency Response

The Winter Emergency Response (WER) operated from November 1, 2024, to March 31, 2025, and included the following:

- Daytime Warming Spaces - open weekdays from 10 a.m. to 4 p.m. at rotating locations within Spruce Grove and Stony Plain
- Late Night Café - open from 7 p.m. to 7 a.m., seven days per week at Congregational Christian Fellowship Church (445 King Street, Spruce Grove)

The WER is a temporary, emergency cold weather response intended to mitigate risk for unsheltered people who are vulnerable to serious, critical, or potentially fatal health impacts as a result of cold weather exposure. It is a collaboration between several Tri Region partner organizations, including the City of Spruce Grove.

The WER is activated when temperatures reach or are forecasted to reach -20°C, including wind chill, for at least 4-6 hours.

Read more about the Winter Emergency Response at sprucegrove.org/WER.

Community Outreach Team

Between January and June, the Community Outreach Team provided 2,577 instances of support to 132 unique individuals. The top three services provided included 681 instances of basic needs support, 310 instances of welfare checks, and 183 financial support appointments. The average age of the individuals supported was 44 years old.

Basic needs support includes providing items such as food, clothing, toiletries, and shower passes.

If you see members of our vulnerable or unsheltered population who may need support, contact the City's **Outreach Team** at **780-962-7583** (Monday to Friday from 8:30 a.m. to 4:30 p.m.)

In the event of an emergency, call 9-1-1.

To learn more about the Community Outreach program, please visit sprucegrove.org/Outreach.

Building a Stronger Community: The Civic Grant Program

Applications for the Community Grant Program for the 2026 funding year were open until May 15, 2025. The Community Grant is one of two funding streams available in the City's newly updated Civic Grant Program.

Community Grants provide financial support to local organizations for projects, events, or services that enhance residents' quality of life in six key areas: social, sport and recreation, arts and culture, economic, environmental, and multicultural initiatives. There is no funding cap, allowing City Council to assess needs and allocate resources based on project impact.

Applications for the Community Grant are evaluated by the Community Services Advisory Committee, comprised of public members, who then make funding recommendations to City Council. This fosters community engagement and encourages people to get involved in local initiatives.

The other funding stream available is the new Microgrant stream which offers up to \$1,500 to help individuals, community groups, and organizations with projects that contribute to a strong and connected community. Applications are accepted year-round with decisions and funding provided within 4-6 weeks. Projects should benefit the community and may include activities like improving accessibility, fostering community connections, and supporting equity and inclusion.

To learn more about the Civic Grant Program, visit sprucegrove.org/Grants.

Keeping Kids Active and Engaged: School Break Camp



During the spring school break, parents were able to keep their children active and engaged by enrolling them in School Break Camp held at the Border Paving Athletic Centre. The popular camp reached full capacity with 30 participants. Feedback from all survey respondents indicated a very high level of satisfaction with the camp. Survey respondents also indicated that building friendships and social skills and engaging in a safe and structured environment were the main benefits of the program.

The School Break Camp is a five-day program designed for children aged 6 to 12, combining elements from the City's Adventure and Art Explorer summer camps. Participants engage in outdoor activities, art projects, and have opportunities to meet new friends. The camp included a field trip to the Royal Alberta Museum and a visit to Aerials Gymnastics. The camp ran from March 25 to March 28.

Search For the Elusive Golden Goose



Residents eagerly searched for the elusive "Golden Goose" during the City's annual Golden Goose Hunt. The Goose was hidden six times with clues posted on the City's website from April 7 to April 25.

Those who tracked down the elusive Golden Goose, hidden somewhere in the parks and trails system, won a prize package valued at over \$400.

The hunt is open to individuals of all ages, making it a family-friendly activity. The event fosters community spirit and encourages residents to explore their city in a fun and engaging way.

Spruce Up Spruce Grove

The annual Spruce Up Spruce Grove community clean-up and tree planting initiative was a huge success. Over 700 people — families, teams, schools, businesses and individuals — rolled up their sleeves and collected garbage in Spruce Grove's trails and green spaces.



The initiative ran from April 9 to May 14 with a Community Celebration and Tree Planting event taking place on May 24. Volunteers planted more than 400 new trees in Heritage Grove Park.

The community-wide, self-directed, volunteer cleanup initiative focuses on encouraging city-wide participation. It enhances community connections, volunteer spirit, environmental stewardship, and pride in our neighbourhoods!

This initiative is a great way for a large number of citizens to have a positive impact in the community and build a connection to our green spaces. Spruce Up Spruce Grove focuses on community parks, school yards, green spaces, and trails.

Learn more at

sprucegrove.org/SpruceUpSpruceGrove.



Spruce Grove Skate Park Society Secures \$1M Grant for New Wheeled Sports Facility



A huge congratulations to Spruce Grove Skate Park Society on receiving \$1 million in grant funding from the Government of Alberta's Community Facility Enhancement Program, presented by local MLA Searle Turton.

This funding will be used in the construction of the new wheeled sports facility at Central Park as part of the Re-imagined Central Park revitalization project. It will encompass a large-scale, contemporary skatepark, pump track, and mountain bike skills park. It's expected the facility will open to the public in late summer or early fall of 2025.

Learn more about the Re-imagined Central Park revitalization project at

sprucegrove.org/ReimaginedCP.



City receives recognition for volunteer effort



The City of Spruce Grove has been recognized as a Global JustServe City for its efforts in community building and supporting diverse groups through promotion of volunteer opportunities. A representative from JustServe presented City Council with the award during the April 28 Council meeting.

Spruce Grove was one of just five cities in North America and the only Canadian city to receive the distinction in 2024.

JustServe is an international volunteer organization which operates JustServe.org, a free, online platform where organizations can post their volunteer needs and volunteers can search for opportunities within their community.

New Indigenous public art unveiled

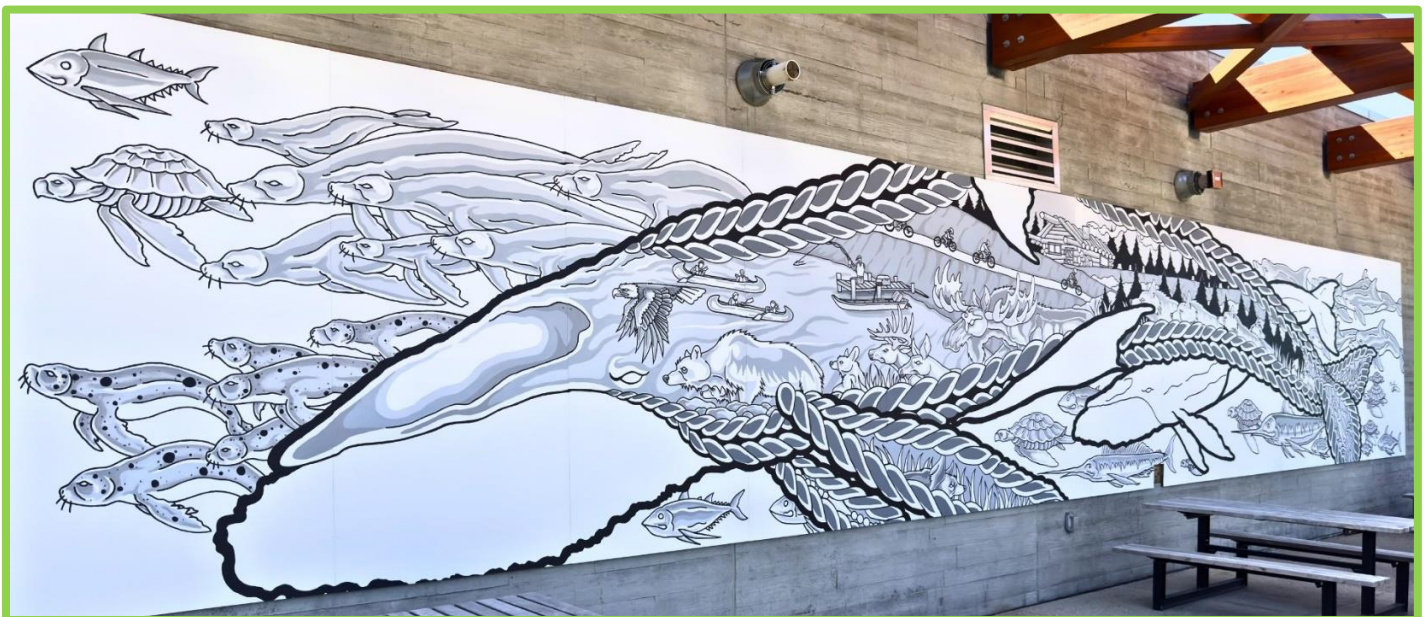


A new mural was unveiled in May at Jubilee Park and is displayed on the north wall of the REMAX Spray Park building.

“The Journey” was painted by Indigenous artist Brandon Atkinson and portrays a whale and her calf, joined by other sea mammals including turtles, sea lions, dolphins, and sailfish, all swimming together in the same direction. Brandon says it represents people from different cultures and backgrounds coming together and traveling to a shared destination – like families gathering at the spray park on a beautiful summer day!

Trans Mountain provided funding for the creation of this great new piece of art in our community.

Check out the interactive map showing all the murals and public art in Spruce Grove at sprucegrove.org/PublicArt.





Heavy Metal Place grand opening



Spruce Grove's incredible new recreation and culture facility Heavy Metal Place opened to the public.

The grand opening celebration took place on May 10 and saw more than 5,000 people visit the facility for an official ribbon cutting followed by tours, live entertainment, public skating, children's activities, commemorative souvenir giveaways, and much more.

Heavy Metal Place is home to two NHL-size ice surfaces including the Thompson Family Arena, the new home of the Spruce Grove Saints, and the Cst. Brett Ryan Community Arena, named in honour of Brett Ryan, a Spruce Grove resident and Edmonton Police Service constable who lost his life in the line of duty in March 2023.

Also featured at Heavy Metal Place is a second branch of the Spruce Grove Public Library, the L.J.L. Galleries Community Art Gallery and permanent home of the Allied Arts Council of Spruce Grove, and a state-of-the-art black box theatre.

For more information about Heavy Metal Place, please visit sprucegrove.org/HeavyMetalPlace.



Annual Seniors' Strawberry Tea

The City hosted the annual Seniors' Strawberry Tea on June 3 to celebrate Spruce Grove seniors as part of Alberta Seniors' Week.



Close to 200 seniors attended the event which took place at Living Waters Christian Academy. The event included musical entertainment, tea, coffee, and dessert.



The REMAX Spray Park

The REMAX Spray Park at Jubilee Park officially opened for the season on May 16. The spray park provides a great way to beat the heat and cool off during the summer.

Residents are encouraged to visit sprucegrove.org/SprayPark for facility hours, rules, and temporary closure information.



Teen Takeover

The Teen Takeover event took place on May 24. Over 120 teens between the ages of 13 and 18 enjoyed a night of swimming, drop-in gym activities, and fun with friends.

The event is a night where parents stay home and teens get the opportunity to "take over" the TransAlta Tri Leisure Centre.



Survey respondents rated their overall experience at Teen Takeover at an average of 4.9 out of 5.



Go Girl: Inspiring Confidence Through Sport

Teen girls across the region gathered at the Border Paving Athletic Centre on May 16 for the inaugural Go Girl event, a one-day initiative designed to foster physical activity, wellness and self-confidence among 11–18-year-old girls.

The program featured a variety of engaging, age-appropriate activities — from yoga and gymnastics to taekwondo and football — enabling participants to try new sports in a vibrant, supportive setting.

Feedback from participants was overwhelmingly positive with all surveyed respondents indicating that they would participate in a future Go Girl Event.

Go Girl is a regional collaboration of the City of Spruce Grove, the Town of Stony Plain, Alberta Parenting for the Future, and the Primary Care Network. This event is a sponsored project of the InMotion Network with funding provided by the Government of Alberta.



Summer in the City

Registrations for Summer in the City programs opened in the second quarter, including Leaders in Training, Adventure Camps, Art Explorer Camps, and Teen Retreat. Registrations for some camps have surpassed the numbers from last year and some have reached capacity.

Programming related to the Youth at the Log Cabin and Pop-Up Playground drop-in programs started on July 7 and will run until August 22. Pop-Up Playground will celebrate the end of the summer season with an End of Summer Bash taking place from August 18 to 22 with special activities including bouncy castles, face painting, sparkle tattoos and a balloon artist.

Stay tuned to the Third Quarter Report for further details on Summer in the City and other program attendance.





An estimated 18,000 people came out to Jubilee Park to celebrate Canada Day! The festivities kicked off with a pancake breakfast in partnership with Knights of Columbus at the Protective Services building.



The opening ceremonies at Jubilee Park began at noon and included a presentation to Spruce Grove's newest Awards of Excellence recipient. Sharon Acheson was recognized in the Community Service category for her lengthy and significant volunteer service to the Spruce Grove and District Agricultural Society.



The afternoon festivities included the West Central Waterdogs Competition, where furry dock rockets took diving leaps. The Full Send BMX Stunt Show wowed Canada Day crowds with extreme jumps, flips, and spins. The Canadian Armed Forces SkyHawks parachute team pulled off some incredible stunts high above the park.

Residents were able to browse the community market for local treasures and tasty treats and participate in fun activities, crafts and games for the whole family.



Canada Day musical headliner Tyler Shaw took to the stage to a packed house at Jubilee Park. The celebration concluded with a spectacular fireworks display high above Jubilee Park.

A free Park & Ride shuttle service was available to provide a convenient way to get to and from the festivities. Accessible parking stalls with shuttle service were also available.





City launches Extended Producer Responsibility Program

As of April 1, the City of Spruce Grove has officially joined the Extended Producer Responsibility (EPR) program, a significant step towards enhancing local recycling initiatives and promoting environmental sustainability.

The EPR program shifts the costs of recycling from local municipalities and taxpayers throughout Alberta, to producers and manufacturers. This transition is expected to provide several benefits to the Spruce Grove community, including:

- **More recycling options** – plastic clamshell containers and Tetra Paks can now be added to blue bags. This includes items such as bakery and fruit packages, rotisserie chicken containers, and boxed soup or drink cartons.
- **Less waste in black carts** – more waste can be diverted from black waste carts and redirected to the recycling stream.
- **Same reliable service** – there are no changes to blue bag curbside pickup schedules, just more opportunities for recycling.

For detailed information on waste sorting and collection schedules, the City's Sort with Success tool offers guidance on proper disposal methods for various items.

Learn more about recycling in Spruce Grove by visiting sprucegrove.org/Recycle.



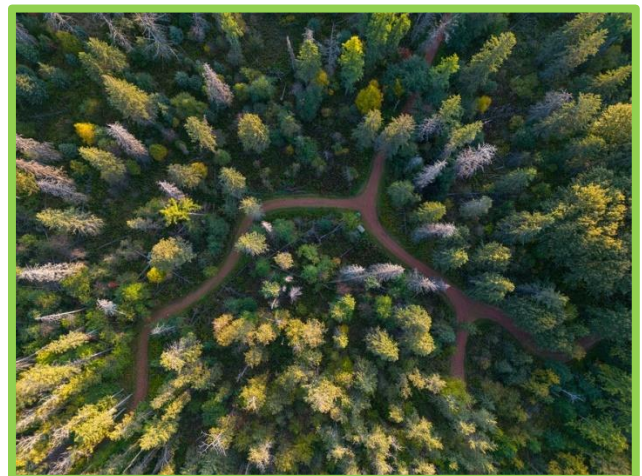
Protecting Our Natural Gem: Heritage Grove Park Maintenance



Starting in early March, City crews started conducting the annual forest maintenance in Heritage Grove Park. Spring maintenance work involved the removal and clean up of deadfall, dead standing trees, and invasive species, while improving the aesthetic of the forest.

This work also supports the ongoing health and appearance of the park, reduces hazards and increases safety. Trails remained open during clean up efforts, but users were asked to observe and follow any detour signage.

To learn more about Heritage Grove Park, visit sprucegrove.org/HeritagePark.



City launches the Clean Energy Improvement Program

The Clean Energy Improvement Program (CEIP) launched earlier this year. The program provides Spruce Grove homeowners with an innovative way to make energy efficiency and renewable energy upgrades to their homes. Since the program launched in May, 45 applications have been received.

CEIP offers flexible, low-interest financing to help homeowners cover eligible upfront costs. Repayment is convenient, with financing paid off through property tax bills over the effective useful life of the upgrade.

Up to \$50,000 is available per property, with a repayment period of up to 20 years depending on the upgrade. When a project is complete, Spruce Grove participants also receive a generous rebate of 7.5% applied directly to their Clean Energy Improvement Tax and property tax bill, reducing their total financing amount.

The program is administered by Alberta Municipalities and supported by the Federation of Canadian Municipalities' Green Municipal Fund, an endowment created by the Government of Canada.

With the goal of lowering energy costs and creating a more climate-resilient community, CEIP can be used to upgrade windows, doors, heating/cooling systems and ventilation, install solar panels, and more. For a complete list of eligible upgrades and more details on how to apply to the program, visit sprucegrove.org/CEIP.



Tri-Municipal Region Rain Barrel Sale

The Tri-Municipal Rain Barrel Sale took place on April 26 at RONA in Spruce Grove. The event was very successful, resulting in the sale of 265 rain barrels by noon. The volume of rain barrels sold was similar to prior years.



Rain barrels provide a free and sustainable source of water for indoor and outdoor plants and gardens. Rain barrels not only reduce the water bill but also promote both water and energy conservation.

The City of Spruce Grove and partner communities support this event by promoting water conservation, but do not subsidize or supply rain barrels.

Shred-4-Free and E-Waste Collection event

The annual Shred-4-Free and E-Waste Collection event took place on June 7 at the Public Works Facility. This event continues to be well attended with 335 residents participating.

The event allows residents to safely dispose of sensitive personal documents and e-waste. Shredding is an effective way to prevent identity theft, while also clearing out old paperwork. Over one tonne of electronics were collected and taken to a recycling facility.

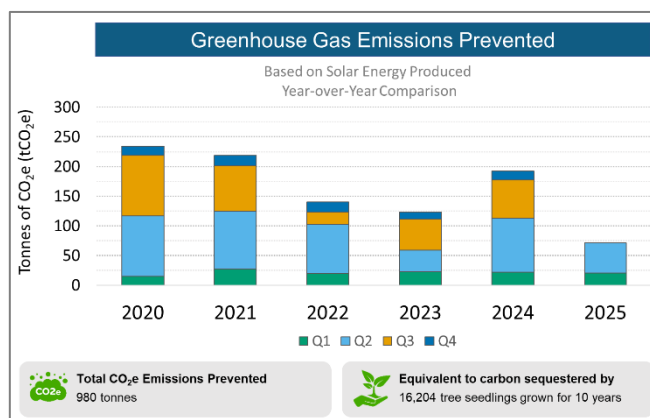
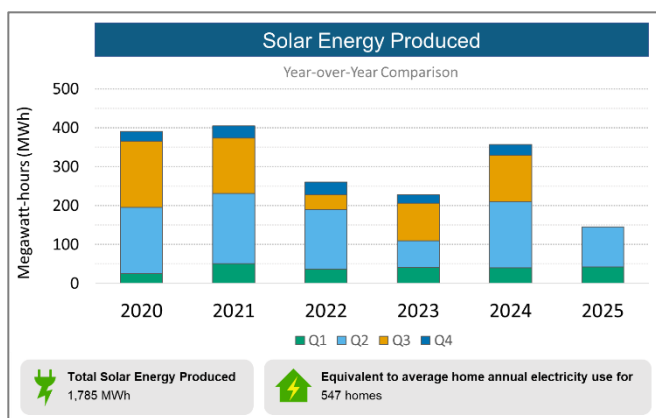
Harnessing the Sun: Solar Energy Output at City Facilities

Building on the success of the Public Works Facility, the City plans to expand its renewable energy initiatives by installing solar panels on the Protective Services Building in 2025.

In 2020, the City of Spruce Grove took a significant step toward sustainability by installing a large-scale solar photovoltaic (PV) system at its Public Works Facility. This initiative, supported by the Alberta Municipal Solar Program (AMSP), underscores the City's commitment to reducing greenhouse gas emissions and promoting renewable energy.

By harnessing solar energy, the facility cut greenhouse gas emissions by about 980 tonnes of CO₂ equivalent, while helping to reduce electricity costs for the building. This reduction is equivalent to carbon sequestered by over 16,000 tree seedlings grown for 10 years, highlighting the project's substantial environmental benefits.

You can now find up-to-date information on solar energy production and greenhouse gas emissions prevention on the City's Reporting Dashboard, available at sprucegrove.org/Dashboard.



DID YOU KNOW?

The City has a webpage dedicated to climate adaptation which includes a list of actions that residents can undertake at home, such as planting climate resilient plants, preparing for extreme weather events, and implementing suggestions from the Climate Resilient Home Guide.

The webpage also includes information about the City's Climate Change Action Plan, current City projects, and the importance of climate adaptation.

For more information, visit sprucegrove.org/ClimateChangeAction.





SMARTstart

setting your business up for success

Seventeen entrepreneurs and seventeen mentors have signed up for the newly launched SMARTstart Program.

Spruce Grove has a thriving and welcoming business community, and small businesses are vital to the local economy.

To support these small businesses, the City launched a new program in the community. The SMARTstart Program is a made-in-Alberta entrepreneurial training initiative designed to support new and aspiring business owners by providing essential tools, mentorship, and business planning resources.

Launched in February, the program spans eight months and aims to equip participants with real-world business skills through a combination of online learning, in-person or virtual workshops, and one-on-one mentorship with experienced local entrepreneurs.

The City hosted three virtual information sessions in February and two in-person information sessions in March about the newly launched SMARTstart Program, geared towards early-stage business owners, as well as entrepreneurs interested in giving back to the community by becoming a mentor.



To learn more about the SMARTstart Program, visit bit.ly/SGSMARTstart

Check out the most recent edition of the Economic & Business Development Newsletter!

Find out about featured local businesses, stay informed about new development, and learn about interesting upcoming events.

Visit investsprucegrove.ca and subscribe to the newsletter.





2025 State of the City



On March 20, Spruce Grove Mayor Jeff Acker delivered the 2025 State of the City address during the annual State of the Region event, hosted by the Greater Parkland Regional Chamber of Commerce. The event also featured an address from Parkland County Mayor Allan Gamble and Stony Plain Mayor William Choy. The State of the Region event serves as a platform for municipal leaders to share accomplishments from the past year and outline future plans, fostering a sense of community and collaboration within the region.

The State of the City address looks back at what the City of Spruce Grove has accomplished over the last year and looks ahead into 2025. This year's State of the City video takes us on an Amazing Race-type adventure around Spruce Grove showcasing some of our latest achievements.

To learn more and hear directly from Mayor Jeff Acker and City Council, watch the 2025 State of the City address by visiting sprucegrove.org/StateOfTheCity.



Addressing Housing Needs: Spruce Grove's Housing Strategy



In January, Spruce Grove City Council approved a Housing Strategy to address the city's growing population, expected to increase by 25,000 over the next 20 years. Development of this strategy involved a thorough review of the City's existing housing inventory, identifying gaps, and assessing the types of housing that may be needed in the future, while also understanding the role of the municipality within the local housing system.

It identifies short-term initiatives and long-term actions to respond to the City's housing needs and inform decisions on land use and development. By fostering collaboration between developers, local organizations, and residents, the City aims to build communities that are not only functional but also offer a strong sense of belonging and connection. This strategic approach aims to maintain the high quality of life that residents of Spruce Grove enjoy while ensuring the housing needs of its diverse and growing population are met in a sustainable and responsible manner.

To learn more about the Housing Strategy, visit sprucegrove.org/HousingStrategy.

Youth Advisory Committee's 2025 Work Plan



On March 24, 2025, Spruce Grove's Youth Advisory Committee (YAC) shared its 2025 work plan with City Council. The work plan is a high-level overview of the focus areas that will guide YAC's involvement and participation in various initiatives. As initiatives emerge that support their priorities, details will be added to the work plan.

This year's priorities include:

- Enhancing inclusion and belonging for youth in Spruce Grove
- Supporting and building awareness for local youth events and initiatives
- Sharing youth perspectives to help inform decision making
- Increasing the committee's presence in the community

The Youth Advisory Committee is tasked with engaging with youth in the community to represent a youth perspective on a variety of municipal issues and provide recommendations to Council on these issues. The committee consists of up to 11 youth members (ages 12-18) and two Council members who provide governance insight and mentorship.

For more information on the YAC, visit sprucegrove.org/YouthAdvisoryCommittee.

City seeks Public Input to Understanding Customer Needs and Enhance Permit Services

With a view to understanding customer needs and enhancing development and building permit and inspection services, the City conducted an online survey in late 2024 related to the City's permit application and inspection processes.

The survey was distributed to builders, contractors, business owners, and homeowners who applied for a permit between January 1, 2024 and August 31, 2024.

Here are the most significant insights:

- **Customer Interaction:** 81 per cent of respondents either agreed or strongly agreed that the staff they dealt with in-person were helpful, while 86 per cent of respondents either agreed or strongly agreed that the staff they dealt with over the phone were helpful.
- **Timely Response:** 84 per cent of respondents who interacted with staff via phone or email, either agreed or strongly agreed that staff responded in a reasonable time.
- **Portal Registration:** 76 per cent of respondents found it either easy or very easy to register on the CityView Portal when preparing and submitting their application.
- **Clarity of Information:** 72 per cent of respondents either agreed or strongly agreed that the information was easy to understand throughout the process.

The survey results will help the City learn what's working well and enhance permit and inspection services where needed. The City values customer feedback and is committed to continuous improvement and providing a high level of service to all citizens.

Spruce Grove Transit Survey: Shaping the Future of the Transit System

With a goal to enhance and shape the future of Spruce Grove’s transit system, the City conducted a survey, inviting both transit users and non-users to share their thoughts on the transit system.

Here are some insights from the survey:

- Commuter and on-demand service types have distinct user groups which almost exclusively use one service type over the other.
- On-demand riders are less likely to have access to a vehicle.
- 59 per cent of commuter riders attend post secondary school.
- Majority of transit users are satisfied with ARC electronic fare payment.
- 74 per cent of transit riders noted that the new Route 560 provided better service, made no difference to service, or were not aware of the change.

The survey was part of the City's ongoing commitment to service excellence, seeking to understand the needs and preferences of residents regarding commuter and local transit services. The information collected is intended to inform future planning decisions to enhance the overall transit experience.

For more information on transit services, please visit sprucegrove.org/Transit.

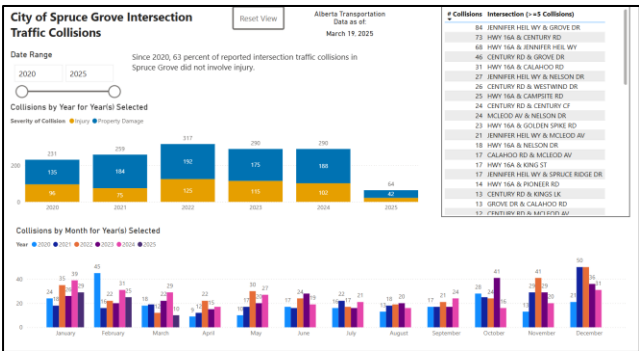


Intersection Collision Dashboard

The City of Spruce Grove has launched a new Collision Dashboard, providing residents with an interactive tool to view traffic collision data at intersections throughout the city. The dashboard has interactive features that allow users to filter data by year, month, severity of collision, or location.

The City is committed to traffic safety and creating safe and accessible roads for all residents. The City’s approach to traffic safety combines engineering design, enforcement, and education. The City uses collision data to identify high-risk intersections and implement targeted safety measures. This proactive approach aims to reduce accidents and improve overall road safety for all users.

The collision data can be accessed through the Reporting Dashboard, available at sprucegrove.org/Dashboard.



Strategic Plan Final Report presented to Council

On June 23, the Strategic Plan Final Report was presented to Council. The 2022-2025 Strategic Plan served as the roadmap Council chose to take for their term (2021-2025). It guided Administration in their work and set the priorities and goals Council wished to accomplish over the course of their term.



The report outlined the progress made across the thirteen goals within the four overarching themes of the plan that reflect the priorities of City Council and the community: Community Connections, Environmental Sustainability, Economic Prosperity, and Governance in Action.

To view the Strategic Plan Final Report, please visit sprucegrove.org/StrategicPlan.

Property Tax Estimator Tool

The City of Spruce Grove has launched a new Property Tax Estimator Tool, giving residents a quick and easy way to estimate their annual property taxes based on their assessed property value.



The tool allows users to enter the assessed property value for the type of property and receive an instant estimate that includes municipal tax, education tax and other levies based on the last approved property tax rate bylaw.

The tool empowers residents to better understand how their taxes are calculated and plan ahead. It is part of the City's ongoing commitment to digital accessibility and transparency.

Access the Property Tax Estimator Tool at sprucegrove.org/TaxEstimator.

FINANCIAL HIGHLIGHTS

Operating Summaries

Municipal Operating Summary

The following are the highlights from the Municipal Operating Summary on page 34 in this report.

The municipal operating results for the second quarter reflect a projected annual surplus of \$1,112,000. This surplus is based on a forecasted increase in revenue of \$2,850,000. Overall expenses are projected to increase by \$1,738,000.

Municipal Revenue

Projected revenue increases of \$2,850,000 are primarily comprised of the following:

- Sales and User fees are projected to increase \$540,000 mainly due to a \$224,000 increase in Planning and Development application fees, a \$198,000 forecasted increase in Engineering development agreements, and a \$85,000 increase in Transit advertising revenue and sales of service.
- Sales to Other Governments are projected to increase by \$106,000 mainly due to cost-of-living adjustments on AHS payments and the additional ambulance in circulation.
- Franchise fees projected to increase by \$130,000 mainly due to increased consumption as the result of higher-than-expected growth and seasonal usage.
- Fines are expected to increase by \$190,000 for a projected \$150,000 in residual Automated Traffic Enforcement (ATE) fines revenue and a \$40,000 anticipated increase in bylaw fines.
- Licenses and Permits are projected to increase of \$942,000 due to increased permitting and inspection activity.
- Rental revenue is projected to decrease by \$50,000 mainly due to an overall decrease in facility rental revenue of \$99,700 for the delayed opening of Heavy Metal Place from February to May 2025, offset by a projected increase of 56,300 in sports field rentals.
- Penalties are projected to increase \$49,000 due to an increase of late payment penalties.
- Other revenue is projected to increase \$910,000 for sale of a portion of the Westwind land
- Investment Income is projected to increase by \$500,000 due to higher than anticipated returns on investments and general operating account interest earnings.
- Transfer from Reserves is projected to decrease by \$497,000 as funding projections are adjusted and to reflect corresponding reduction in project expenditures.
- Gain on Disposal of TCA is projected to increase \$63,000 to reflect a gain on sale of a City fleet vehicle.

Municipal Expense

Projected expense increases of \$1,738,000 are primarily comprised of the following:

- General Government expenses are projected to decrease by \$442,000 mainly due to:
 - \$270,000 decrease for anticipated savings in city insurance premiums.
 - \$108,000 savings in corporate memberships due to the dissolution of Edmonton Metropolitan Region Board.
 - \$75,000 decrease in contracted services within Business Advisory Services.
- Protected Services is projecting an overall decrease of \$591,000 mainly due to projected savings for the RCMP contract of \$496,000 and a \$88,000 overall projected decrease in salaries, wages and benefits.
- Transportation and Roadway is projecting an increase of \$45,000 mainly due to increased costs for materials and supplies.
- Community Services expenses are projected to increase \$440,000 mainly due to the debt repayment for Heavy Metal Place (\$473,000) that has been partially offset by lower operating costs attributed to the delayed opening.
- Internal Transfer Interest expense is projected to increase \$366,000 to reflect the transfer of interest from municipal to utility fund.
- Transfer to Reserves is projected to increase by \$1,898,000 mainly due to the transfer of sale proceeds for the Westwind land sale and an increase of a \$910,000 transfer of interest to non-utility restricted reserves.

Utility Operating Summary

The following are the highlights from the Utility Operating Summary on page 36 in this report.

Revenues are projected to increase \$1,917,000 mainly due to the following:

- Sales and User Fees projected to increase \$896,000 mainly due to increased growth and use of services.
- Internal Transfer Interest revenue is projected to increase \$366,000 to reflect the transfer of interest from municipal to utility fund.
- Transfer from Utility Reserves is projected to increase by \$618,000 to manage shortfalls in the Solid Waste and Sanitary Sewer programs.

Expenses are projected to increase by \$1,917,000 mainly due to the following:

- Water program is projecting a \$241,000 increase mainly due to increase in water purchases required for increase in water consumption.
- Sanitary Sewer program is projecting an increase of \$345,000 mainly due to increase in wastewater purchases required in line with forecasted increase in water consumption.
- Solid Waste program is projecting a \$50,000 increase for black and organic bins due to growth.
- Utility Admin Fee is projected to increase by \$90,000 to reflect overall increase utility expenses.
- Transfer to Utility Reserve is projected to increase \$1,227,000 for the transfer of utility interest earned on reserves and adjustments for in-year surplus and deficits to the respective restricted utility reserves.

Developer Operating Summary

The following are the highlights from the Developer Summary on page 37 in this report.

Second quarter developer results are projecting an overall increase in revenue of \$2,914,000 for developer contributions and levies, offset with \$3,003,000 transfer to developer reserve.

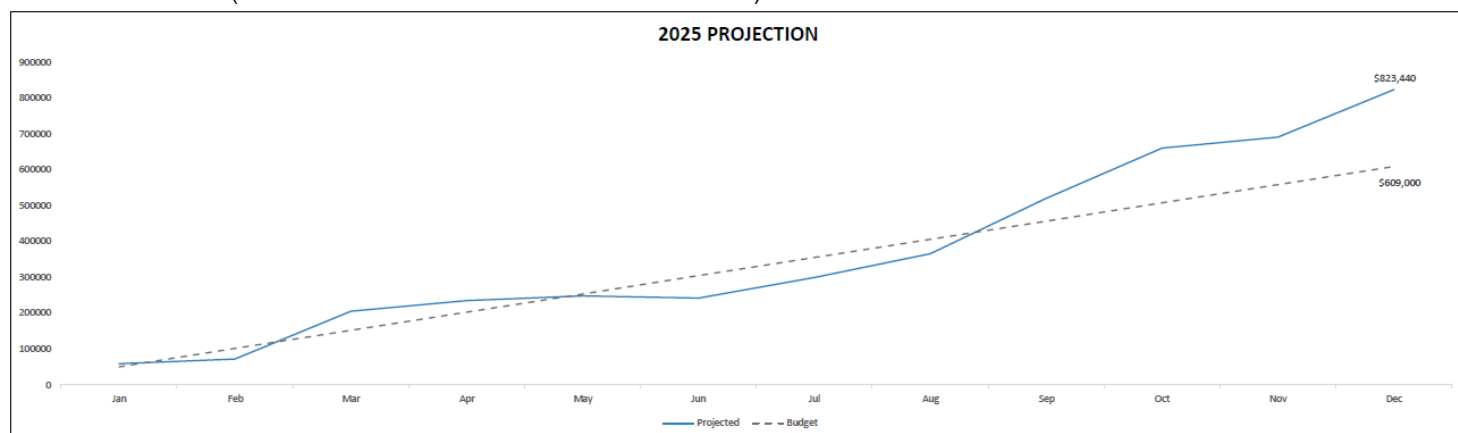
Investment Reporting

Investments as at June 30, 2025

	Book Value	Market Value	% of Total Portfolio	Yield to Maturity - Cost
Cash & Cash Equivalents	\$16,622,822	\$15,583,959	34.37%	1.71%
Short-term Fixed Income	\$8,621,363	\$8,571,582	18.90%	3.19%
Medium-Term Fixed Income	\$19,073,644	\$19,189,270	42.32%	3.45%
Other	\$2,000,000	\$2,000,000	4.41%	-%
	\$46,317,829	\$45,344,810	100%	3.27%

The market value is measured at a point in time (June 30, 2025, in this case). The City intends to hold the investments to maturity and would receive a return of 3.27%. The portfolio return is expected to naturally increase/decrease over time as interest earnings and maturities are reinvested into the current rate environment.

Portfolio Performance	3 Month	1 Year
Portfolio Performance	-0.068%	6.187%
Benchmark Return (FTSE Canada Short Term All Government Index)	0.190%	5.680%



The above chart depicts the 2025 budgeted interest earned on the City's investment portfolio to the projected interest to be earned by year end.

Investment Policy Compliance

Investment Policy Constraints	Actual	Compliant
Compliant with the <i>Municipal Government Act</i> (Section 250 – Investments)	100%	YES
Minimum DBRS Credit Rating of "A"	100%	YES
Maximum 75% with DBRS Credit Rating of "A"	34%	YES
Minimum 25% with DBRS Credit Rating of "AA"	66%	YES
Maximum 10% Per Security	7%	YES
Maximum 35% Per Issuer	22%	YES
Maximum 75% Total Portfolio Limit Provincial Issued	27%	YES
Maximum 75% Total Portfolio Limit Chartered Banks Issued	68%	YES

Capital Summaries

The following are capital highlights from the Capital Summaries on pages 38-43 of this report.

Municipal Capital Summary

- Solar Installation at Protective Services project forecast is \$100,000 lower than budgeted due to removal of solar installation at 410 King Street facility from the project.
- Spruce Grove to Stony Plain Trail Phase 1 and 2 project forecast is \$285,000 lower than budget, however there is potential for deficiency work to be required prior to closure of the project.
- Boundary Road West & Grove Drive Extension Design project forecast is \$80,000 lower than budget due to tender and design work coming in lower than anticipated.
- Public Safety Vehicle & Equipment is forecasted to be \$58,000 higher than budgeted due to addition of a Stryker Power Load to ambulance equipment.
- The Agrena Ice Plant Replacement is \$500,000 higher than budget due to equipment and installation costs being higher than expected. Additional budget request of \$500,000 will be brought forward to Council for consideration with the 2026 budget.
- Support to City Centre for Calahoo, First Ave Lanes, and Main (Queen – Calahoo) project is anticipated to complete \$56,000 under budget.
- Traffic Signal Rehabilitation is expected to be \$200,000 lower than budgeted due to scope changes related to CN Rail.
- Collector Roadway/Local Roadway – Surface project is expected to be \$200,000 lower than budgeted due to tender coming in lower than anticipated.
- Industrial Watermain & Surface Rehabilitation – Surface project is expected to be \$100,000 lower than budget due to tender coming in lower than anticipated.

Utility Capital Summary

- Boundary Road – Water project is forecasted to be \$89,000 lower than budget due to tender coming in lower than anticipated.
- Pressure Reducing Valves project is forecasted to be \$200,000 higher than budgeted due to increased costs for materials coming from the U.S.
- Boundary Road – Sanitary Sewer project is forecasted to be \$252,000 lower than budgeted due to tender coming in lower than anticipated.

Developer Capital Summary

- Boundary Road project is forecasted to be on budget.

FINANCIAL STATEMENTS

Operating Summaries

**CITY OF SPRUCE GROVE
MUNICIPAL OPERATING SUMMARY
FOR THE PERIOD ENDED JUNE 30, 2025**
In Thousands of Dollars

				Forecast		Actual	
	2025 YTD Actual	2025 Approved Budget	2025 Annual Forecast	Budget vs Forecast Variance (\$)	Forecast Variance vs Budget (%)	Budget Remaining (\$)	Actuals vs Budget (%)
Revenue							
Property Taxes	29,369	58,883	58,878	(4)	0%	29,513	50%
Sales and User Fees	1,840	2,669	3,208	540	20%	829	69%
Sales to Other Governments	1,873	3,611	3,717	106	3%	1,738	52%
Franchise Fees	4,813	8,800	8,930	130	1%	3,987	55%
Fines	281	255	445	190	75%	(26)	110%
Government Transfers - Operating	1,881	4,177	4,149	(27)	-1%	2,295	45%
Licenses and Permits	2,026	2,534	3,476	942	37%	508	80%
Rentals	1,245	2,545	2,495	(50)	-2%	1,300	49%
Penalties	303	695	743	49	7%	392	44%
Other	1,494	886	1,796	910	103%	(608)	169%
Investment Income	575	1,075	1,575	500	46%	500	54%
Utility Administration Fee	1,500	2,983	2,983	-	0%	1,483	50%
Transfer from Reserve	1,681	3,439	2,942	(497)	-14%	1,758	49%
Gain (Loss) on Disposal of TCA	63	-	63	63	0%	(63)	0%
	48,946	92,551	95,401	2,850	3%	43,605	53%

(continued)				Forecast		Actual	
	2025 YTD Actual	2025 Approved Budget	2025 Annual Forecast	Budget vs Forecast Variance (\$)	Forecast Variance vs Budget (%)	Budget Remaining (\$)	Actuals vs Budget (%)
Expenses							
General Government	9,288	19,869	19,426	(442)	-2%	10,580	47%
Protective Services	10,642	22,863	22,272	(591)	-3%	12,221	47%
Transportation and Roadway	12,243	24,689	24,734	45	0%	12,446	50%
Community Services	8,568	15,943	16,383	440	3%	7,375	54%
Development Services	2,558	4,767	4,788	21	0%	2,209	54%
Internal Transfer Interest	190	-	366	366	0%	(190)	0%
Transfer to Reserve	4,120	4,420	6,319	1,898	43%	301	93%
	47,608	92,551	94,288	1,738	2%	44,943	51%
Excess (Deficiency) of Revenue over Expenses	1,338	-	1,112	1,112	-	(1,338)	

*Variance represents the difference between annual forecast and annual budget.

**CITY OF SPRUCE GROVE
UTILITY OPERATING SUMMARY
FOR THE PERIOD ENDED JUNE 30, 2025**
In Thousands of Dollars

				Forecast		Actual	
	2025 YTD Actual	2025 Approved Budget	2025 Annual Forecast	Budget vs Forecast Variance (\$)	Forecast Variance vs Budget (%)	Budget Remaining (\$)	Actuals vs Budget (%)
Revenue							
Sales and User Fees	15,671	31,113	32,009	896	3%	15,442	50%
Government Transfer Operating	1	-	1	1	0%	(1)	0%
Penalties	69	128	135	7	5%	59	54%
Other	116	389	419	31	8%	272	30%
Internal Transfer Interest	190	-	366	366	0%	(190)	0%
Transfer from Utility Reserves	513	842	1,460	618	73%	329	61%
	16,560	32,472	34,389	1,917	6%	15,912	51%
Expenses							
Sanitary Sewer	3,513	7,306	7,652	345	5%	3,793	48%
Stormwater	502	1,548	1,512	(36)	-2%	1,046	32%
Solid Waste	1,694	3,479	3,529	50	1%	1,785	49%
Water	4,580	9,097	9,338	241	3%	4,517	50%
Utility Administration Fee	1,500	2,983	3,073	90	3%	1,483	50%
Transfer to Utility Reserve	4,770	8,058	9,286	1,227	15%	3,288	59%
	16,560	32,472	34,389	1,917	6%	15,912	51%
Excess of Revenue over Expenses							
	-	-	-	-		-	

*Variance represents the difference between annual forecast and annual budget.

**CITY OF SPRUCE GROVE
DEVELOPER OPERATING SUMMARY
FOR THE PERIOD ENDED JUNE 30, 2025**
In Thousands of Dollars

	2025 YTD Actual	2025 Approved Budget	2025 Annual Forecast	Forecast		Actual	
				Budget vs Forecast Variance (\$)	Forecast Variance vs Budget (%)	Budget Remaining (\$)	Actuals vs Budget (%)
Revenue							
Developer Contributions and Levies	6,162	4,665	7,580	2,914	62%	(1,497)	132%
Transfer from Reserve		223	223	-	0%	223	0%
	6,162	4,888	7,803	2,914	60%	(1,274)	126%
Expenses							
Principal Repayment on Long-Term Debt	496	1,436	1,464	27	2%	940	35%
Interest on Long-Term Debt	446	1,172	1,056	(116)	-10%	726	38%
Transfer to Reserve	5,220	2,280	5,283	3,003	132%	(2,940)	229%
	6,162	4,888	7,803	2,914	60%	(1,274)	126%
Excess of Revenue over Expenses	-	-	-	-		-	

*Variance represents the difference between annual forecast and annual budget.

Capital Summaries

CITY OF SPRUCE GROVE MUNICIPAL CAPITAL SUMMARY FOR THE PERIOD ENDED JUNE 30, 2025

					Forecast		Actual	
	Project Years	Total Project Actuals	Total Approved Project Budget	Total Project Forecast	Budget vs Forecast Variance (\$)	Forecast Variance vs Budget (%)	Budget Remaining (\$)	Actuals vs Budget (%)
Municipal New Capital								
Fibre Ring	2025	321,789	223,014	321,789	-	-	98,774	30.70%
Solar Installation Protective Services Building	2024	424,911	139,894	324,911	(100,000)	(23.53%)	285,017	67.08%
Total Civic Infrastructure		746,700	362,908	646,700	(100,000)	(13.39%)	383,791	51.40%
Agrena Railings	2025	120,000	-	120,000	-	-	120,000	100.00%
Civic Centre Development (Heavy Metal Place)	2022-2025	85,226,730	83,436,045	85,226,730	-	-	1,790,685	2.10%
Horizon Stage New Construction	2025-2027	5,400,000	-	5,400,000	-	-	5,400,000	100.00%
Plumber/Gasfitter Vehicle (25PLN7108)	2025	85,000	-	85,000	-	-	85,000	100.00%
Total Community Facilities		90,831,730	83,436,045	90,831,730	-	-	7,395,685	8.14%
Brookside - Implementation of Outdoor Facilities Strategy	2025	30,000	-	18,930	(11,070)	(36.90%)	30,000	100.00%
Spruce Grove - Stony Plain Trail Phase 1 & 2	2024	815,000	511,128	530,000	(285,000)	(34.97%)	303,872	37.28%
Re-imagined Central Park	2022-2025	8,670,000	5,460,085	8,670,000	-	-	3,209,915	37.02%
Scattering Garden - Pioneer Cemetery	2025	100,000	-	100,000	-	-	100,000	100.00%
Utility Vehicle	2025	23,000	22,663	22,663	(337)	(1.47%)	337	1.47%
Total Parks and Open Spaces		9,638,000	5,993,875	9,341,593	(296,407)	(3.08%)	3,644,125	37.81%
Transit - Local Service: Install Bus Stops	2025	62,500	-	62,500	-	-	62,500	100.00%
Spruce Grove Transit Centre	2022-2025	5,131,790	5,049,246	5,131,790	-	-	82,544	1.61%
Total Public Transit		5,194,290	5,049,246	5,194,290	-	-	145,044	2.79%
Boundary RD W & Grove Drive Extension Design	2024	400,000	278,858	320,000	(80,000)	(20.00%)	121,142	30.29%
Equipment for Service Expansion of Snow Removal on Public Walkways	2025	100,000	92,935	92,935	(7,065)	(7.07%)	7,065	7.07%
F550 With Dump Box	2025	140,000	-	140,000	-	-	140,000	100.00%
Total Transportation		640,000	371,793	552,935	(87,065)	(13.60%)	268,207	41.91%
Total Municipal New Capital		107,050,719	95,213,867	106,567,247	(483,473)	(0.45%)	11,836,853	11.06%

					Forecast		Actual	
(continued)	Project Years	Total Project Actuals	Total Approved Project Budget	Total Project Forecast	Budget vs Forecast Variance (\$)	Forecast Variance vs Budget (%)	Budget Remaining (\$)	Actuals vs Budget (%)
Municipal Lifecycle (RMR) Capital								
Wireless Phase 1 - City Hall + Agrena - IS LCP	2024	400,000	400,000	400,000	-	-	-	-
City Hall Renovation 2024 - 2025	2024-2025	4,737,615	2,106,475	4,737,615	-	-	2,631,140	55.54%
Information Services Lifecycle Replacement Plan	2025	561,000	-	561,000	-	-	561,000	100.00%
Facilities Lifecycle Replacement Plan	2025	2,706,544	83,642	2,741,544	35,000	1.29%	2,622,902	96.91%
Vehicle & Equipment Lifecycle Replacement Plan	2025	2,276,648	226,367	2,237,582	(39,066)	(1.72%)	2,050,281	90.06%
Total Civic Infrastructure		10,681,807	2,816,484	10,677,741	(4,066)	(0.04%)	7,865,323	73.63%
Fire Equipment Lifecycle Plan Purchases Thermal Imaging Camera - TIC Camera Argus (L1)	2025	10,000	-	10,000	-	-	10,000	100.00%
(A-6) 2017 Ford E450 Ambulance - Equipment LCP	2024	190,000	194,113	194,113	4,113	2.16%	(4,113)	(2.16%)
2003 Ford F450 - Fleet LCP	2024	250,000	74,014	250,000	-	-	175,986	70.39%
Unit 2166 (A-4) 2013 Ford E450 Ambulance - Equipment LCP	2024	301,675	355,812	355,933	54,258	17.99%	(54,137)	(17.95%)
Total Public Safety		751,675	623,939	810,046	58,371	7.77%	127,736	16.99%
Agrena Ice Plant Replacement	2024	785,000	-	1,285,000	500,000	63.69%	785,000	100.00%
Agrena HVAC Natural Gas Furnace	2024	10,000	-	-	(10,000)	(100.00%)	10,000	100.00%
Lighting Replacement Horizon Stage	2025	58,000	-	58,000	-	-	58,000	100.00%
Total Community Facilities		853,000	-	1,343,000	490,000	57.44%	853,000	100.00%
Parks & Open Spaces Rehabilitation Program	2025	20,000	-	20,000	-	-	20,000	100.00%
Total Parks and Open Spaces		20,000	-	20,000	-	-	20,000	100.00%
Back Lane Resurfacing - Surface	2025	310,000	5,552	310,000	-	-	304,448	98.21%
CP_CE727 Support to City Centre Calahoo, First Ave, Lanes, Main(Queen-Calahoo)	2024	956,333	697,875	900,000	(56,333)	(5.89%)	258,458	27.03%
Traffic Signal Rehab	2024	800,000	467,307	600,000	(200,000)	(25.00%)	332,693	41.59%
5T Tandem - Sanding/Snow Plowing/Material Haul - Equipment LCP	2024	337,363	362,057	362,057	24,694	7.32%	(24,694)	(7.32%)
2022 International HV607 SBA - Equipment LCP	2024	337,363	362,057	362,057	24,694	7.32%	(24,694)	(7.32%)
Woodchipper	2025	60,000	37,450	60,000	-	-	22,550	37.58%
Crosswalk Improvements	2025	160,000	1,383	160,000	-	-	158,617	99.14%
Collector Roadway/Local Roadway (SURFACE)	2025	1,800,000	38,990	1,600,000	(200,000)	(11.11%)	1,761,010	97.83%

(continued)	Project Years	Total Project Actuals	Total Approved Project Budget	Total Project Forecast	Forecast		Actual	
					Budget vs Forecast Variance (\$)	Forecast Variance vs Budget (%)	Budget Remaining (\$)	Actuals vs Budget (%)
Support to City Centre ARP - Mohr Avenue (Calahoo to Main)	2025	1,300,000	76,572	1,300,000	-	-	1,223,428	94.11%
Pedestrian Walkways Rehabilitation Program	2025	200,000	-	200,000	-	-	200,000	100.00%
Traffic Signal Rehab	2025	75,000	29,642	75,000	-	-	45,358	60.48%
Industrial Watermain & Surface Rehab (SURFACE)	2025	1,500,000	49,603	1,400,000	(100,000)	(6.67%)	1,450,397	96.69%
Total Transportation & Roadways		7,836,059	2,128,489	7,329,114	(506,945)	(6.47%)	5,707,570	72.84%
Total Municipal Lifecycle (RMR) Capital		20,142,541	5,568,912	20,179,901	37,359	0.19%	14,573,629	72.35%
Total Municipal Capital		127,193,260	100,782,778	126,747,147	(446,113)	(0.35%)	26,410,482	20.76%

**CITY OF SPRUCE GROVE
UTILITY CAPITAL SUMMARY
FOR THE PERIOD ENDED JUNE 30, 2025**

					Forecast		Actual	
	Project Years	Total Project Actuals	Total Approved Project Budget	Total Project Forecast	Budget vs Forecast Variance (\$)	Forecast Variance vs Budget (%)	Budget Remaining (\$)	Actuals vs Budget (%)
Utility New Capital								
Water Operator Vehicle 4x4 Pickup Truck	2025	65,000	-	65,000	-	-	65,000	100.00%
Boundary Road - Water	2025	789,000	-	700,000	(89,000)	(11.28%)	789,000	100.00%
Pickup Truck - Utilities (50% WATER)	2025	37,500	-	37,500	-	-	37,500	100.00%
Pressure Reducing Valves	2025	450,000	24,648	650,000	200,000	44.44%	425,352	94.52%
Water Meter Growth Program	2025	450,000	202,384	450,000	-	-	247,616	55.03%
Total Water		1,791,500	227,032	1,902,500	111,000	6.20%	1,564,468	87.33%
Sanitary Sewer Operator Vehicle 4x4 Pickup Truck	2025	65,000	-	65,000	-	-	65,000	100.00%
Boundary Road - Sanitary Sewer	2025	602,000	-	350,000	(252,000)	(41.86%)	602,000	100.00%
Pickup Truck - Utilities (50% SAN SEWER)	2025	37,500	-	37,500	-	-	37,500	100.00%
Total Sanitary Sewer		704,500	-	452,500	(252,000)	(35.77%)	704,500	100.00%
Boundary Road - Stormwater	2025-2026	1,496,000	-	1,496,000	-	-	1,496,000	100.00%
Total Stormwater		1,496,000	-	1,496,000	-	-	1,496,000	100.00%
Total Utility New Capital		3,992,000	227,032	3,851,000	(141,000)	(3.53%)	3,764,968	94.31%

					Forecast		Actual	
(continued)	Project Years	Total Project Actuals	Total Approved Project Budget	Total Project Forecast	Budget vs Forecast Variance (\$)	Forecast Variance vs Budget (%)	Budget Remaining (\$)	Actuals vs Budget (%)
Utility Lifecycle (RMR) Capital								
2-281 Ford F250 - 4x4	2025	75,090	-	77,000	1,910	2.54%	75,090	100.00%
Support to CCARP - Alley behind Jacks (Queen to West)	2025	1,000,000	50,523	1,000,000	-	-	949,477	94.95%
Water Meter Replacement Program	2025	340,000	239,412	340,000	-	-	100,588	29.58%
Water Reservoir	2025-2026	3,487,000	58,433	3,487,000	-	-	3,428,567	98.32%
CE727 Support to CCARP Watermain Mohr Ave	2024	1,500,000	745,889	1,500,000	-	-	754,111	50.27%
2014 5T Tandem Flusher	2024	77,520	76,342	76,342	(1,178)	(1.52%)	1,178	1.52%
Total Water		6,479,610	1,170,599	6,480,342	732	0.01%	5,309,011	81.93%
Support to CCARP - Alley behind Jacks (Queen to West)	2025	800,000	43,888	800,000	-	-	756,112	94.51%
CE727 Support to CCARP Sanitary Sewer Mohr Ave	2024	1,000,000	767,590	1,000,000	-	-	232,410	23.24%
2014 5T Tandem Flusher	2024	232,560	229,026	229,026	(3,534)	(1.52%)	3,534	1.52%
Total Sanitary Sewer		2,032,560	1,040,505	2,029,026	(3,534)	(0.17%)	992,055	48.81%
2-278 Silverado 1/2 Ton - Solid Waste	2025	58,845	-	58,845	-	-	58,845	100.00%
Total Solid Waste		58,845	-	58,845	-	-	58,845	100.00%
Storm Rehabilitation - SWMF Aeration	2025	200,000	171,469	200,000	-	-	28,531	14.27%
Storm Rehab - Storm Water Management Facility (Ponds)	2025	200,000	198,886	200,000	-	-	1,114	0.56%
Collector Roadway/Local Roadway (STORM)	2025	180,000	-	180,000	-	-	180,000	100.00%
Storm Sewer Rehabilitation	2024	1,200,000	1,074,096	1,200,000	-	-	125,904	10.49%
2014 5T Tandem Flusher	2024	465,120	458,053	458,053	(7,067)	(1.52%)	7,067	1.52%
Total Stormwater		2,245,120	1,902,503	2,238,053	(7,067)	(0.31%)	342,617	15.26%
Total Utility Lifecycle (RMR) Capital		10,816,135	4,113,607	10,806,266	(9,869)	(0.09%)	6,702,528	61.97%
Total Utility Capital		14,808,135	4,340,638	14,657,266	(150,869)	(1.02%)	10,467,497	70.69%

**CITY OF SPRUCE GROVE
DEVELOPER CAPITAL SUMMARY
FOR THE PERIOD ENDED JUNE 30, 2025**

					Forecast		Actual	
	Project Years	Total Project Actuals	Total Approved Project Budget	Total Project Forecast	Budget vs Forecast Variance (\$)	Forecast Variance vs Budget (%)	Budget Remaining (\$)	Actuals vs Budget (%)
Developer New Capital Municipal								
Boundary Road	2025-2026	11,695,117	279,350	11,695,117	-	-	11,415,767	97.61%
Total Transportation & Roadways		11,695,117	279,350	11,695,117	-	-	11,415,767	97.61%
Total Utility Lifecycle (RMR) Capital		11,695,117	279,350	11,695,117	-	-	11,415,767	97.61%
Total Developer New Capital Municipal		11,695,117	279,350	11,695,117	-	-	11,415,767	97.61%