



Election Sign Guide

During election seasons, the placement of candidate signs plays a role in campaign visibility and voter outreach. The City's [Election Sign Bylaw \(C-1281-23\)](#) sets out regulations to help ensure signage is placed consistently and does not interfere with the safety of pedestrians and vehicular traffic.

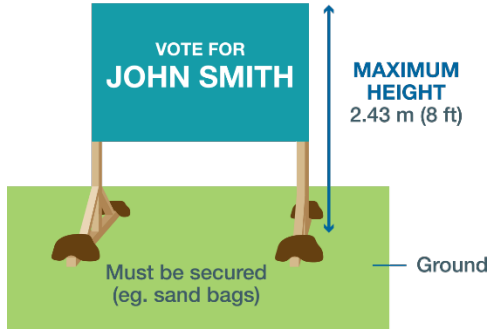
Disclaimer: *This document is intended to be a guide to help interpret the requirements of the Election Sign Bylaw. Graphics may not be to scale, and maps may not have exact measurements. It is responsibility of candidates to be familiar with, and adhere to, all requirements of the Election Sign Bylaw.*

General Regulations

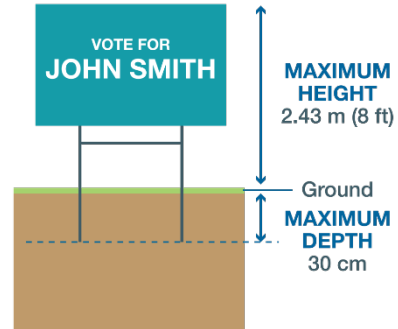
- Candidates must:
 - obey regulations set out in the City's [Traffic Bylaw](#) when parking to place or remove elections signs;
 - contact the appropriate authorities such as Utility Safety Partners (Call Before You Dig), to ensure erecting election signs in an area is safe to do so;
 - ensure that they have consent of the property owner if they erect or affix a sign on or private property;
 - ensure elections signs are securely erected to withstand inclement weather and so they do not impede pedestrian or vehicular traffic; and
 - remove any damaged or vandalized elections signs within 24 hours of notification of the damage or vandalism.

- The maximum height of an election sign placed on the ground is 2.43 m (8 ft) measured from the ground to the top of the sign. Candidates placing election signs on the ground must ensure their signs remain securely affixed to the ground and are upright at all times. Election signs must be mounted on:
 - a portable frame structure;
 - a wire frame; or
 - metal or wood stake installed at a maximum depth of 30 cm.

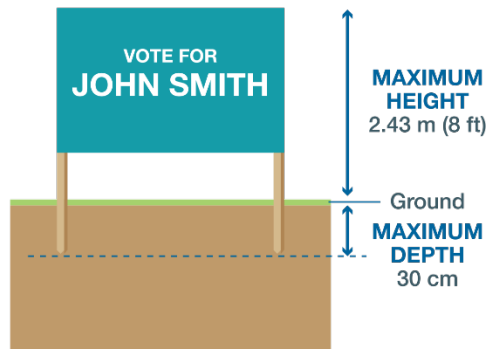
FRAMED STRUCTURES (not staked)



WIRE FRAME



FRAMED STRUCTURES (staked)



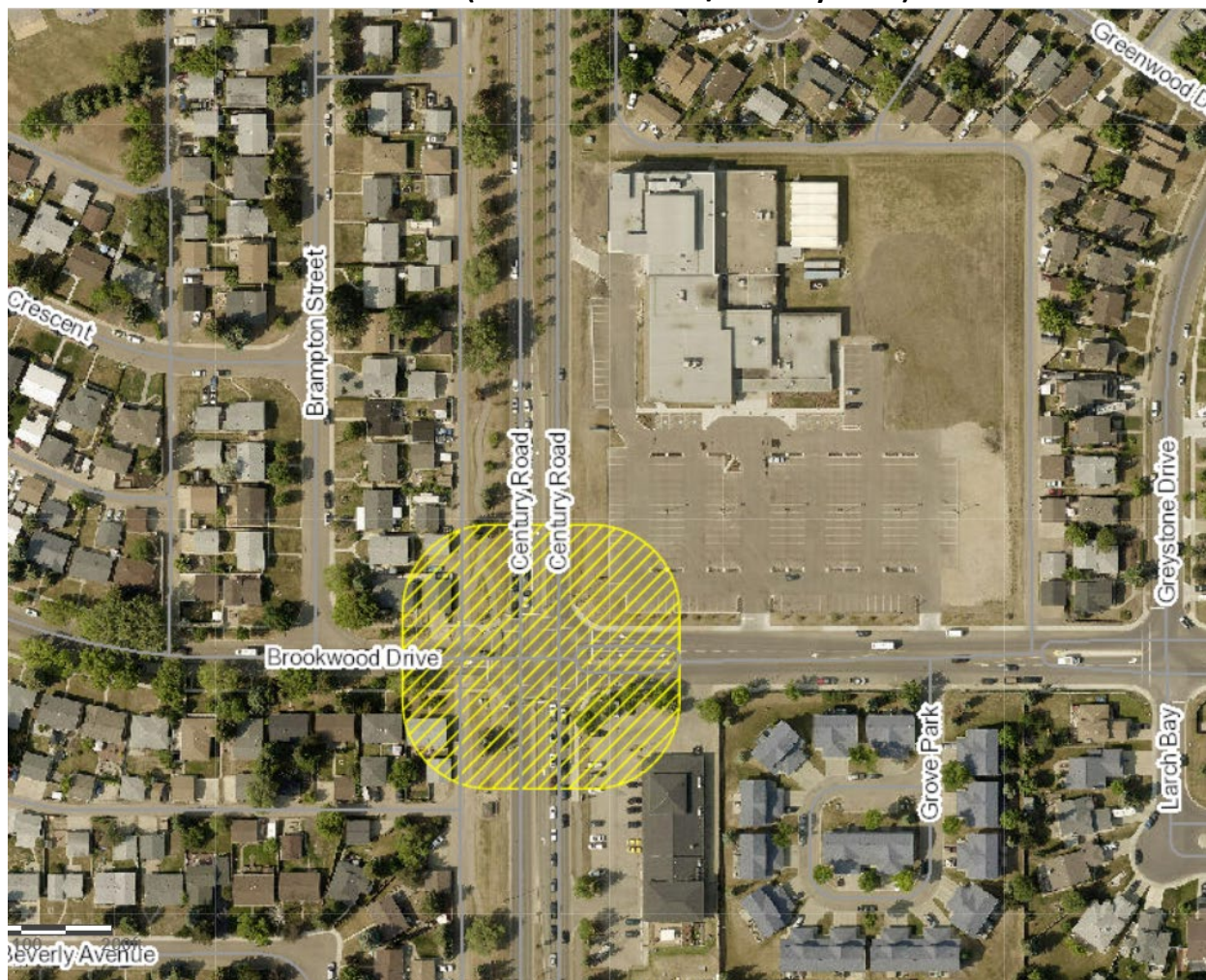
- The City's corporate logo, election logo or seal cannot be used on any election sign, in any campaign advertising, or in any campaign material such as signs, brochures, social media or websites.
- Election signs must not look like a ballot. An election sign would be considered to resemble a ballot if it lists names (real or fictional) other than the candidate's name.

LOOKS LIKE BALLOT



- Once election signs have been placed or erected within the regulations, they may not be taken down by anyone *other than* the candidate or their official agent, nor covered up, defaced or otherwise damaged by anyone *including* the candidate or official agent.
- Elections signs greater than 1 m (3.28ft) in height shall not be located:
 - within 30 m (98.42 ft) of a **signalized** intersection (see **Map 1** for an example);
 - within 15 m (49.2 ft) of any other intersection (see **Maps 2 and 3** for examples);
 - or
 - within 3 m (9.84 ft) of the curb (see **Map 4** for an example).

Map 1 – Example – Prohibition of Signs Greater Than 1 m Within 30 m of a Signalized Intersection (Brookwood Drive / Century Road)



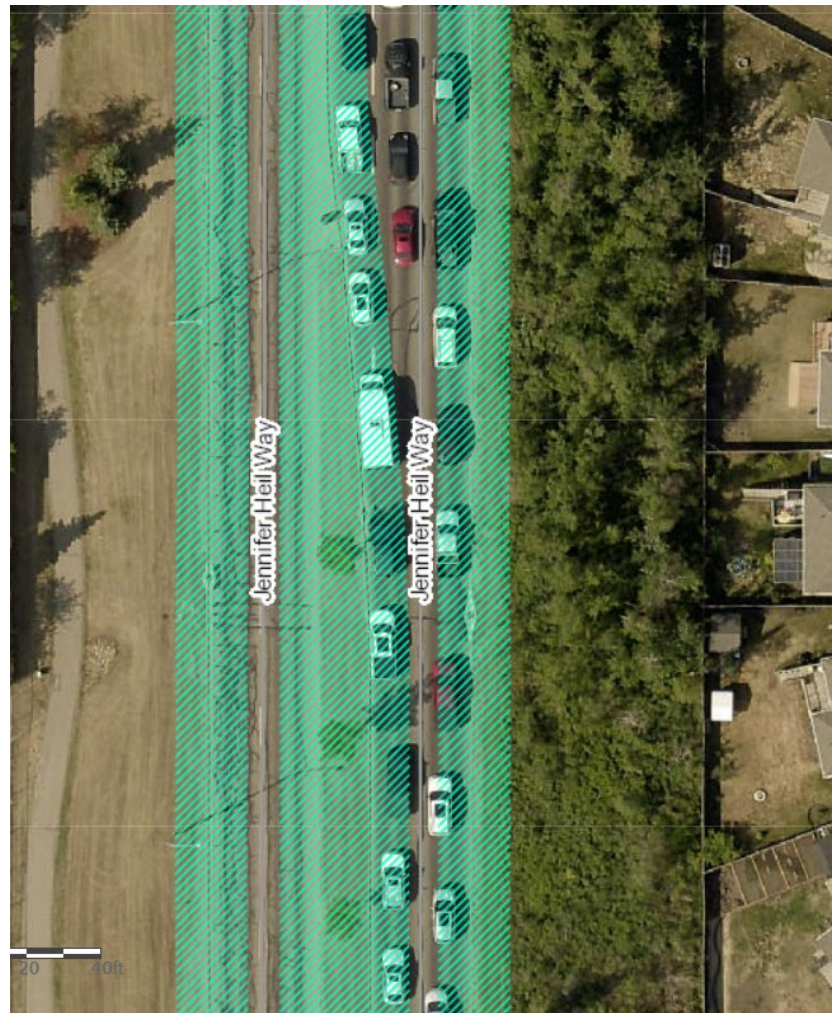
Maps 2 – Example – Prohibition of Signs Greater Than 1 m Within 15 m of a Unsignalized Intersection (Woodhaven Drive / Walnut Street)



Maps 3 – Example – Prohibition of Signs Greater Than 1 m Within 15 m of a Unsignalized Intersection (Woodhaven Drive / Windermere Drive)



**Map 4 – Example – Prohibition of Signs Greater Than 1 m Within 3 m of the Curb
(Jennifer Heil Way)**



Election Signs on Public Property

Election signs may be **placed on public property** by (or on behalf of) a candidate participating in any election, but no earlier than 12:01 a.m. on a nomination day or election writ day.

Public property is any property within Spruce Grove owned by, occupied, leased or under the jurisdiction of the City, Government of Alberta or Government of Canada, except highways.

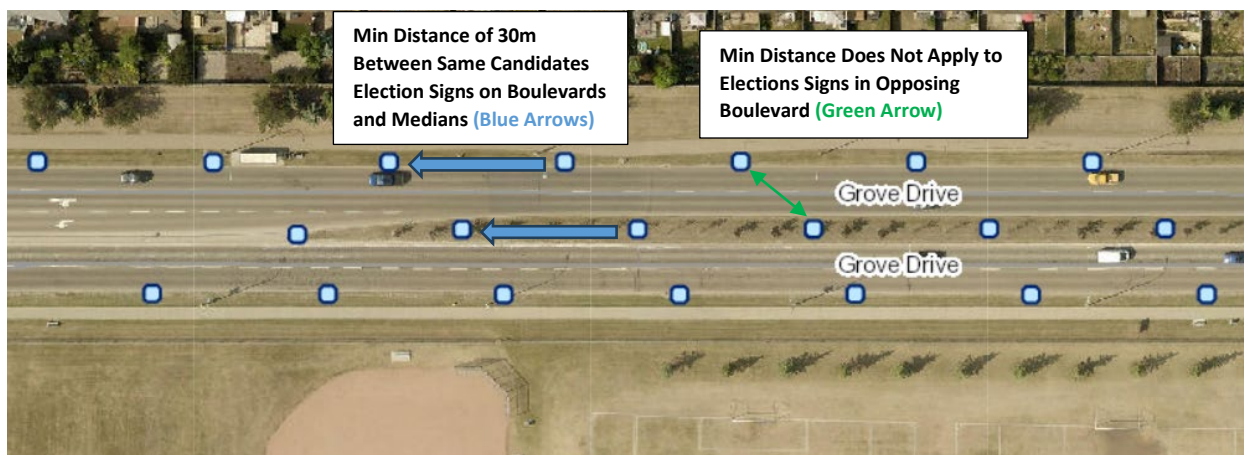
There are cases where signs on public property are not permitted (e.g. upon or within any City-owned facility including the site upon which the facility is situated or in a park or playground owned by the City). See the Prohibitions section of this Guide and the Election Sign Bylaw for more information.

Boulevards and Medians

Election signs placed along boulevards and medians are to be placed with a minimum spacing distance of 30 m (98.43 ft) between signs for the same candidate. This minimum spacing distance does not apply to elections signs placed in the opposing boulevard along the highway (see **Map 5** for an example).

There are no minimum distance requirements between different candidates' signs. However, candidate a highly encouraged to be respectful of other candidates and not place their signs so close to another candidate's sign that it blocks it.

Map 5 – Example – Minimum Distance of Election Signs for the Same Candidate Along Boulevards and Medians (Grove Drive)

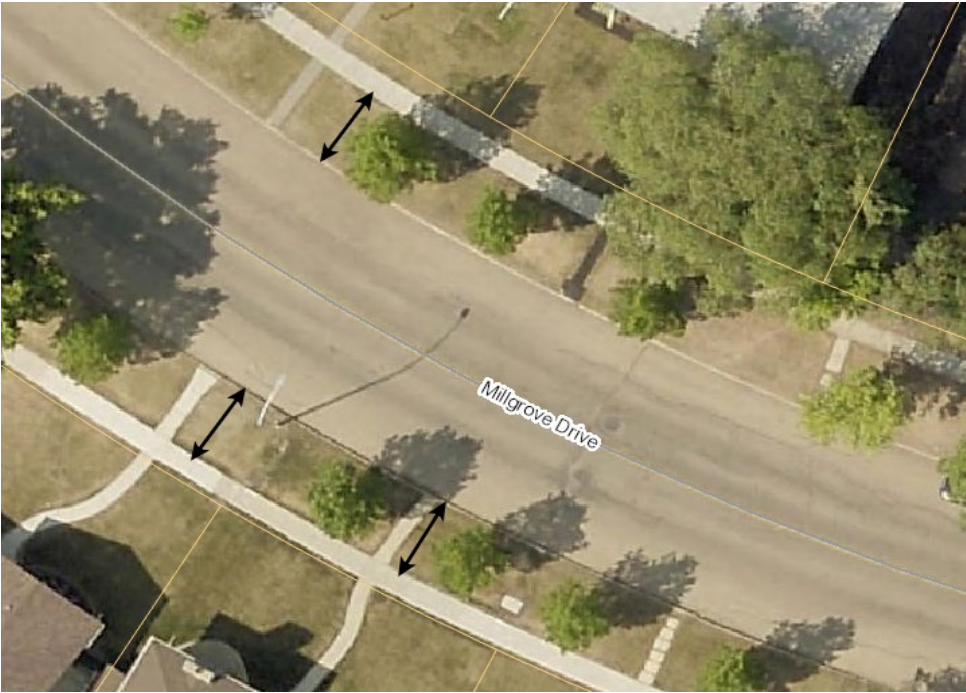


Boulevards between the curb and property line or medians along roadways are public property. There is a maximum sign face area of 3 m² (32.29 ft²) for election signs on a boulevard.

Note: Boulevards in front of houses in residential neighbourhoods are public property (see **Map 6** for an example).

Boulevard Max Sign Face 3 square meters (32.29 square feet) is equal to	
Dimensions (feet)	4 ft x 8 ft
Dimensions (meters)	1.22 m x 2.46 m

Map 6 – Example – Boulevard in Residential Neighbourhoods (Millgrove)



Election Signs on Private Property

Elections signs are permitted on private property with the property owner’s consent. The timing for erection of election signs is specific to the size and where the election sign will be posted.

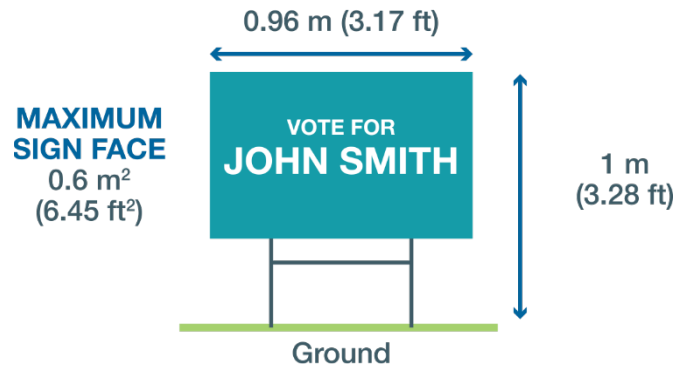
Elections Signs Less Than 1 m in Height

Election signs with a **maximum height** of 1 m (3.28 ft) from the ground to the top of the sign and **maximum sign face area** of 0.6 m² (6.45 ft²) may be placed on private property **60 calendar days prior to an election day**.

AUGUST 2025						
S	M	T	W	T	F	S
17	18	19	20	21	22	23

60 days prior to election day
(less than 1 m height)
Thursday, August 21, 2025

ELECTION SIGN LESS THAN 1 M MAXIMUM SIGN FACE



Elections Signs Greater than 1 m, but Less than 2.43 m Height

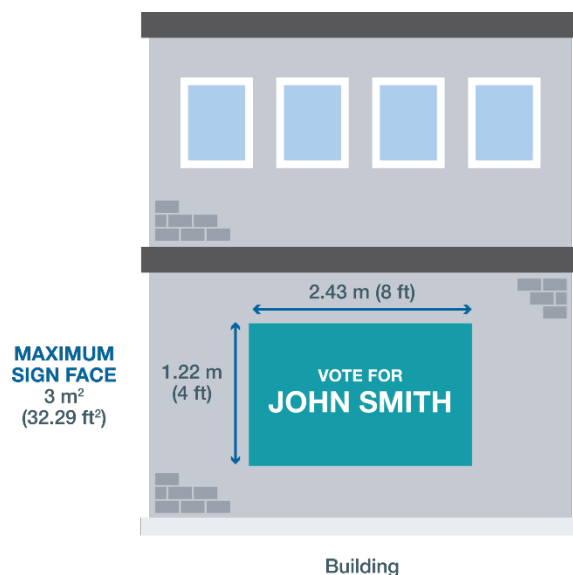
Election signs on private fences, private buildings or other private property may be erected **no earlier than 12:01 a.m. on a nomination day or election writ day** as per the following:

- on private fences and private building external walls up to a maximum height of 2.43 m (8 ft) measuring the entire election sign structure and have a maximum sign face area of 3 m² (32.29 ft²). As per the Land Use Bylaw anything affixed to a private fence is considered part of the fence and therefore cannot exceed the height of the fence;

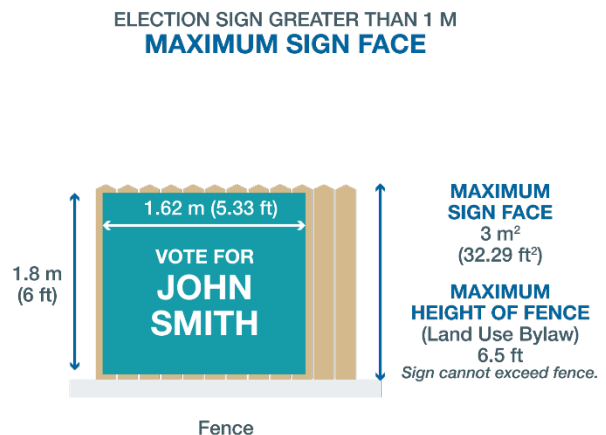
SEPTEMBER 2025						
S	M	T	W	T	F	S
21	22	23	24	25	26	27

Nomination day
(greater than 1m, but less than 2.43 m height)
Monday, September 22, 2025

Election Sign on Private Building External Walls



Election Sign on Private Fence



- on or in the ground on private property in Non-Residential Areas up to a maximum height of 2.43 m (8 ft) from the ground to the top of the election sign and a maximum sign face area of 3 m² (32.29 ft²). A Non- Residential Area is an area within the City not zoned as residential as set out in the City's [Land Use Bylaw](#).

Schedule "A" provides further information on election sign sizes and timing.

Proximity to a Voting Station

Election signs cannot be placed within 15 m (49.2 ft) of the property line of the parcel of land a voting station is located on **during an advance vote or election day** (see **Maps 7 and 8** for examples).

Map 7 - Voting Station (Alliance Church) – Prohibition of Election Signs 15m From Property Line on Voting Days



Map 8 - Voting Station (Living Waters Christian Academy) – Prohibition of Election Signs 15m From Property Line on Voting Days



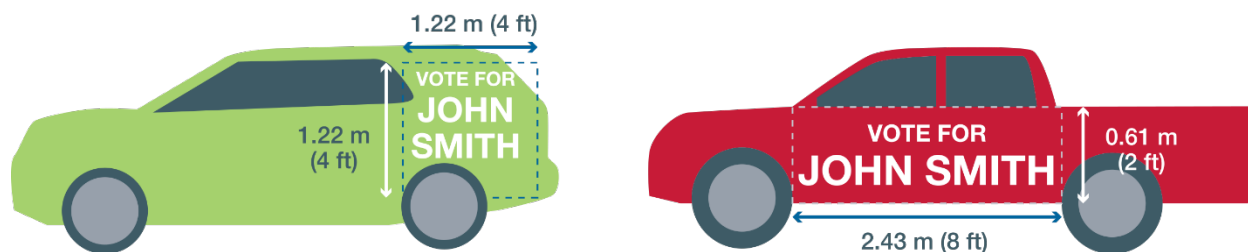
Election Signs on Vehicles

“Vehicle Signs” as defined in the Election Sign Bylaw include but are not limited to a vehicle wrap, magnetic sign or painted image on a vehicle or trailer.

Vehicle signs can have a maximum sign face area of 1.5 m² (16.15 ft²).

Vehicle Sign Max Size 1.5 square meters (16.15 square feet) is equal to	
Dimensions (feet)	4.02 ft x 4.02 ft
Dimensions (meters)	1.22 m x 1.23 m

SIGN ON VEHICLE



During an advance vote or on election day, election signs or vehicle signs are not permitted within 15 m (49.2 ft) of the property line of a voting station. See **Maps 7 and 8** for examples.

Prohibitions

Election signs are subject to the following prohibitions within Spruce Grove. Any election signs in violation may be removed. Election signs **shall not**:

- be illuminated, or have balloons or inflatable devices attached to or near them;
- display an intermittent flashing, rotating or moving light or have moving parts;
- be attached to trees on private or public property;
- interfere with the safe and orderly movement of pedestrians or with the sight lines between pedestrians and/or vehicles;
- be placed or erected in a manner that creates a danger to people or property;
- be located on any traffic control device or where they obscure, detract from, or could be confused with a traffic control device;
- be located on highways (including paved shoulders, traffic circles, or traffic islands) or placed on any physical highway structure (bridges, guardrails, retaining walls, or concrete barriers);

- be placed in medians on Highway 16A or McLeod Avenue between King Street and Calahoo Road;
- be placed upon or within any City-owned facility including the site upon which the facility is situated, including the boulevard surrounding the property line of the City-owned facility or be placed on any fences or street furnishing owned by the City. City facilities include. Please see **Schedule “B”** for listing of all City owned facilities.
- be placed in a school or playground zone, or in a park or playground owned by the City;
- have an appearance similar to a ballot;
- have more than two sign face areas or exceed 3 m² (32.29 ft²) in sign face area; or
- be placed or erected in a manner that creates a danger to persons or property.

Removing Election Signs

OCTOBER 2025						
S	M	T	W	T	F	S
19	20	21	22	23	24	25

Election day:
Monday, October 20, 2025

Elections signs removed by:
Saturday, October 25, 2025

All election signs, whether placed on public or private property, should be **removed within five calendar days** of election day. Damaged or vandalized election signs must be removed within 24 hours of the candidate being notified by the City.

Disposing of Election Signs

Non-recyclable material from election signs is to be disposed in a black waste cart or in the garbage bins at the Eco Centre, located at 50 Diamond Avenue. Recyclable materials from elections signs can be taken to the Eco Centre. Find out what goes where at sprucegrove.org/SortWithSuccess.

Enforcement

An election sign may be removed and disposed of by a Peace Officer without prior notice or compensation to the owner if it is found to:

- pose an imminent danger to persons or property,
- impede or interfere with City operations, or

- contravene the Election Sign Bylaw or any other bylaw or enactment.

Any person who contravenes a provision of the Election Sign Bylaw may be liable to a fine.

Please refer to section 8 of the Election Sign Bylaw for all enforcement provisions.

Election Sign Acknowledgement Form

All candidates will be required to sign the Election Sign Acknowledgment Form outlined in **Schedule “C”** within one week of submitting their nomination forms.

Schedule “A”

ELECTION TIMING AND SIGN SIZE

	Relevant Bylaw Section	Election Sign Timing	Sign Face Area (maximum)	Sign Height (maximum)
Election Sign on the Ground of Public Property	4.1 & 5.3	12:01 a.m. Nomination Day or Election Writ Day	n/a	2.43 m (8 ft) from ground to top of sign
Election Sign on the Ground of Private Property	4.2 & 5.2	60 days prior to Election Day	0.6 m ² (6.45 ft ²)	1 m (3.28 ft) from ground to top of sign
Election Sign on the Ground Private Property in Non-Residential Area	4.3 & 5.5	12:01 a.m. Nomination Day or Election Writ Day	3 m ² (32.29 ft ²)	2.43 m (8 ft) from ground to top of sign
Election Sign on Private Fence	4.3 & 5.4	12:01 a.m. Nomination Day or Election Writ Day	3 m ² (32.29 ft ²)	2.43 m (8 ft) entire election sign structure
Election Sign on Private Building	4.3 & 5.4	12:01 a.m. Nomination Day or Election Writ Day	3 m ² (32.29 ft ²)	2.43 m (8 ft) entire Election Sign structure
Election Sign on Ground in Boulevard	4.1 & 5.8	12:01 a.m. Nomination Day or Election Writ Day	3 m ² (32.29 ft ²)	2.43 m (8 ft) from ground to top of sign
Election Sign on Ground in Median	4.1 & 5.10 (c)	12:01 a.m. Nomination Day or Election Writ Day	n/a	1 m (3.28 ft) from ground to top of sign

Schedule “B”

LIST OF CITY-OWNED FACILITIES

Facility	Address
110 Manitoba Court	110 Manitoba Court
410 King Street	410 King Street
414 King Street	414 King Street
Agrena	9 Agrena Road
Aspen Glen Rink	180 Grove Drive
Border Paving Athletic Center	9 Tri Leisure Way
Brookwood Rink	460 King Street
City Hall	315 Jespersen Avenue
City Hall Garage	301 Jespersen Avenue
Heavy Metal Place / Transit Centre	50 Westwind Drive
Eco Center	50 Diamond Avenue
Elks Hall	400 Diamond Avenue
Fire Training Ground	1 Schram Street
Fuhr Sports Park	211 Jennifer Heil Way
Horizon Stage	1001 Calahoo Road
Lakewood Rink	1 Lawson Boulevard
Library	35 Fifth Avenue
Log Cabin	454 King Street
North Zone Pumphouse	990 Calahoo Road
Protective Services	36 Fifth Avenue
Public Works Century Close	21 Century Close
Public Works Quonset	21 Century Close
Public Works Schram Street	1 Schram Street
RCMP	91 Campsite Road
South Zone Pumphouse	400 Diamond Avenue
South Zone Water Storage	400 South Avenue
Spruce Ridge Satellite Building	311 Spruce Ridge Road
Water Fill Station	138 South Avenue
Wellness Center	344 Pioneer Road
West Log Cabin	600 Main Street

Schedule "C"



SPRUCE GROVE
VOTES!

ELECTION SIGN ACKNOWLEDGEMENT FORM

LOCAL JURISDICTION: The City of Spruce Grove, Province of Alberta

ELECTION DATE: Monday, October 20, 2025

I certify that I have received a copy of C-1281-23 Election Sign Bylaw.

I further certify that I have read, understand, and agree to comply with the City of Spruce Grove election sign requirements as outlined in C-1281-23 Election Sign Bylaw in its entirety.

I acknowledge that a violation of the Election Sign Bylaw may result in the removal of my election signs and a fine.

Candidate Name: _____

Complete Address: _____

Phone Number: _____ E-mail: _____

Alternative contact:

Name: _____ Phone Number: _____

Candidate Signature: _____ Date: _____

Witness Name: _____ Witness Signature: _____

Completed *Election Sign Acknowledgment Forms* must be delivered to the Returning Officer at City Hall (315 Jespersen Avenue) or emailed to elections@sprucegrove.org no later than one week from submitting the nomination form, provided one week is not later than Nomination Day (September 22, 2025)

The personal information on this form is being collected under the authority of section 33(c) of the Freedom of Information and Protection of Privacy (FOIP) Act. It will be used to support the enforcement of election signage requirements in the City of Spruce Grove for federal, provincial or municipal elections. The personal information will be protected in accordance with Part 2 of the Act. If you have any questions collection, use and disclosure of personal information, please contact the FOIP Coordinator at 780-962-2611 or foip@sprucegrove.org

