

Call for artists to paint Jubilee Park mural

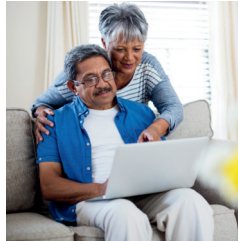
The City invites Indigenous artists or Indigenous-led artist teams to submit a proposal for a new piece of public art at Jubilee Park. This 48 ft. by 8 ft. mural will be installed near the REMAX Spray Park and should celebrate and recognize Indigenous culture, heritage, traditions, and ways of being. Proposals will be accepted until Sunday, September 15, 2024. Learn more and download the application package at sprucegrove.org/PublicArt.



Use Online Tools to do business with the City

Spruce Grove residents and businesses now have access to Online Tools, a convenient place to look and find all the ways you can complete common tasks and report non-emergency issues to the City. From accessing permitting tools and tax information, to reporting a crime or missed waste collection, there are a lot of ways for you to self serve online.

Explore Online Tools at sprucegrove.org/OnlineTools.



Horizon Stage 2024-25 tickets on sale

Tickets are on sale now for the 2024-25 season at Horizon Stage! Purchase your tickets online, by phone, or in person at the Border Paving Athletic Centre. See the performers and schedule at horizonstage.com.



Career Opportunities

- Deputy City Clerk
- Senior Executive Assistant - Mayor and Council

For details or to apply, visit sprucegrove.org/Careers.

News You Can Use

New 40 km/h speed limit for residential neighbourhoods and collector roads are now in effect

Spruce Grove is committed to traffic safety and creating safe, sustainable roads that help make neighbourhoods quiet and peaceful for all residents. Speed limits on residential neighbourhood roads and on collector roads have been reduced from 50 km/h to 40 km/h effective August 31.

Slowing down on residential roads gives drivers more time to react to the unexpected, reduces accidents, and has very little impact on travel times. For more information, including a list of frequently asked questions, visit sprucegrove.org/SafeRoads.



Small commitment. Big reward!

The City of Spruce Grove believes in the power of diversity to build a brighter future for our City. We're looking for enthusiastic people from various backgrounds to join our boards and committees!

Being a member of a Council-appointed board or committee offers many benefits:

- Contribute to your community
- Promote diverse ideas and perspectives to influence decisions facing Spruce Grove
- Expand your network by connecting with fellow residents
- Gain insight into municipal governance
- Add experience to your resume

Learn more about the opportunities available at sprucegrove.org/Boards. Applications are open until 4 p.m. on September 27, 2024.

**SMALL
COMMITMENT
BIG REWARD!**

**APPLY TO JOIN
A BOARD OR COMMITTEE
BY SEPT. 27**

sprucegrove.org/Boards



Council Meetings

Regular Council meeting Monday, September 9, 2024

Spruce Grove City Council's Regular Council meeting on Monday, September 9 at 6 p.m. will be open to the public and live streamed at sprucegrove.org/Agenda.

Members of the public may participate in the Public Input Session either in person or virtually. Virtual participation may be done by registering by email cityclerk@sprucegrove.org or by calling 780-962-7615 before noon on Monday, September 9.

Alternately, residents can submit a statement or a question to be read on their behalf by emailing cityclerk@sprucegrove.org until the Public Input Session is complete.

Agendas and meeting minutes are available at sprucegrove.org/Agenda.



Notice of development permit decisions

The following development permits for discretionary uses and variances have been approved under the provisions of the Land Use Bylaw. This list does not include Permitted Uses. For a full list of all Development Permit decisions, as well as how to appeal a decision of the Development Officer to the Subdivision and Development Appeal Board, please visit sprucegrove.org/DevPermitNotices. Please direct any questions to the Planning and Development Department at 780-962-7582, Monday to Friday from 8:30 a.m. to 4:30 p.m.

| Permit # | Legal Land Description | Project Address |
|---------------------------|--|----------------------|
| USE: Discretionary | | |
| PLDPR202400717 | 1920493;20 | 65 50 HEATHERGLEN DR |
| | To construct a secondary suite in the basement of the proposed semi-detached dwelling | |
| PLDPR202400786 | 1420138;11;34 | 315 PIONEER RD |
| | To locate a day home into the existing dwelling | |
| PLDPR202400799 | 1723512;4;21 | 41 ELWYCK GATE |
| | To construct a secondary suite in the basement of an existing single detached dwelling | |