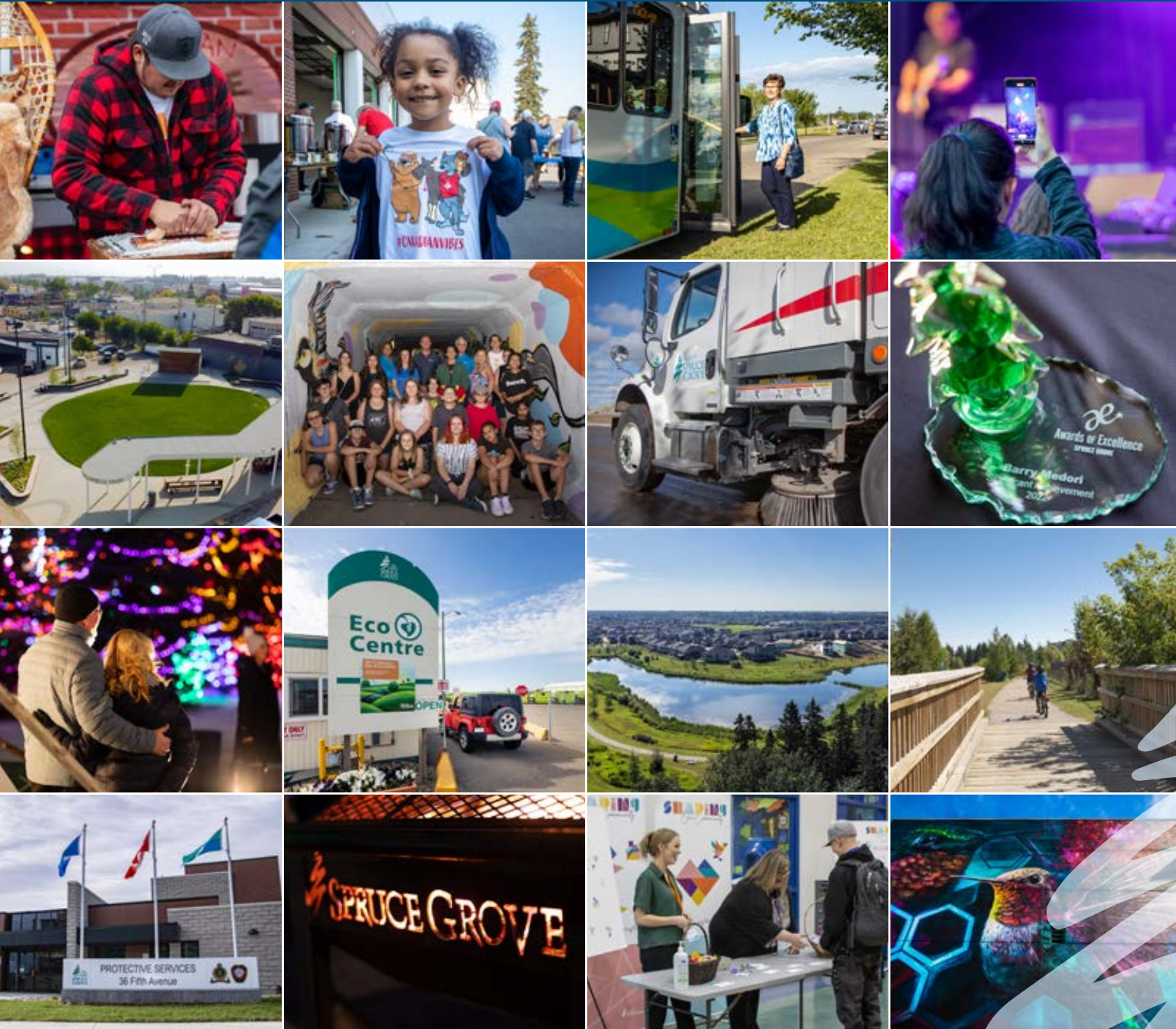


CITYPULSE

2023 EDITION


YOUR CONNECTION TO THE CITY OF SPRUCE GROVE





LAND ACKNOWLEDGEMENT

The City of Spruce Grove is honoured to acknowledge the land we work, play, and make our homes on as Treaty 6 territory, and the Métis Nation of Alberta Region 4. This is sacred land that holds the hearts, footsteps and spirits of many First Nation, Métis and Inuit Peoples, and in particular, Paul First Nation, Enoch Cree Nation, Alexis Nakota Sioux Nation, Michel First Nation, Alexander First Nation, and the Lac Ste. Anne Métis. We recognize and acknowledge Indigenous values, traditional teachings, ways of being, contributions, and historical inequities. The City is dedicated to Truth and Reconciliation to help in healing, and learning to build reciprocal and trusted relationships. We commit towards strengthening relations and building bridges with the Indigenous Nations whose traditional territories the City is located within.



THANKS FOR STOPPING BY!

Check out our **CityPulse E-Newsletter** & subscribe today at sprucegrove.org/CityPulse!

And welcome to an all-new edition of *CityPulse* magazine! Your source for news, information, and opportunities to connect with the City of Spruce Grove, and learn about upcoming projects, events and initiatives. This annual printed version of *CityPulse* is supplemented by the e-newsletter version, which is delivered directly to your inbox bi-weekly. Not getting the *CityPulse* e-newsletter? Sign up today at sprucegrove.org/CityPulse.

In this edition of *CityPulse* magazine, we'll take a look at some of the significant projects planned for Spruce Grove in 2023, including the development of a new Community Standards Bylaw, a formal mural program to promote public art, and the installation of infrastructure to support future electric vehicle charging stations throughout the city. Plus, we have updates on the Civic Centre project and City Centre Area Redevelopment Plan, and we'll hop on board to learn about the newly expanded on-demand local transit service. When it comes to taking out the trash, we've got everything you need to know to become the Waste Warrior of your block... the Super Separator on your street. Learn all about waste collection in Spruce Grove, including our handy Trim Your Trash mobile app and the Eco Centre. Ever wondered which level of government is responsible for providing which service? We've got a handy reference chart inside, plus, details about City Council; how you can attend a meeting in person or watch online, and how to get in touch with your elected officials.

In addition to *CityPulse*, both in this printed form and digital e-newsletter, there are many other ways to stay

connected with the City. Follow us on our various social media channels and check out the new Spruce Grove Protective Services Facebook page too! Our website, sprucegrove.org, is full of valuable information including the latest news and an upcoming events calendar. You can learn more about major projects and initiatives by visiting Connect Spruce Grove, at connect.sprucegrove.org.

We hope you enjoy this edition of *CityPulse* magazine, and it helps you get the most out of living in Spruce Grove! If you have any comments or suggestions about *CityPulse*, please send an email to corpcomm@sprucegrove.org.

MORE WAYS TO STAY CONNECTED



sprucegrove.org



[@sprucegrove](https://www.facebook.com/sprucegrove)



[@citysprucegrove](https://twitter.com/citysprucegrove)



[@cityofsprucegrove](https://www.instagram.com/cityofsprucegrove)



connect.sprucegrove.org



City of Spruce Grove

TABLE OF CONTENTS

YOUR CITY COUNCIL

Page 4

TRANSFORMATION IN PROGRESS

Page 16

UNDERSTANDING YOUR GOVERNMENT AND HOW IT WORKS

Page 6

SPRUCE GROVE TRANSIT

Page 19

IMPLEMENTING COUNCIL'S VISION

Page 10

CIVIC CENTRE PROJECT

Page 22

RECYCLING, ORGANICS, AND WASTE COLLECTION IN SPRUCE GROVE

Page 12



**Artist rendering/subject to change*



Permits, licences and inspections

If you're planning a construction or renovation project that will require a permit, you can now apply for everything you need online! The CityView online portal makes it easy and convenient for builders, developers, business owners, and residents to apply for permits, business licences, and other related applications.



sprucegrove.org/CityView

CityPulse e-newsletter

In addition to this annual printed version of *CityPulse*, there's also a bi-weekly e-newsletter that delivers timely updates on City news, projects, and events. Sign up today and stay connected to the City and the community.



sprucegrove.org/CityPulse

Facility rentals

Did you know the City offers a variety of rental spaces and facilities that are suitable for meetings, celebrations, and workshops, as well as sports and recreation use? Just keep in mind that some are only available to rent on a seasonal basis.



sprucegrove.org/FacilityRentals

Work with us

Be part of a great team! The City offers a wide range of career opportunities that support the delivery of high-quality programs and services to the residents of Spruce Grove. Employees also receive excellent benefits, including health and dental coverage, as well as education and training opportunities.



sprucegrove.org/Careers

YOUR CITY COUNCIL

SERVING THE COMMUNITY OF CHOICE



From left to right: Councillor Stuart Houston, Councillor Dave Oldham, Councillor Danielle Carter, Mayor Jeff Acker, Councillor Erin Stevenson, Councillor Jan Gillett, Councillor Reid MacDonald

Spruce Grove's City Council has one mayor and six councillors who are elected to serve four-year terms. Members of Council are responsible for making decisions in the best interest of the municipality and citizens, setting the strategic direction of the City and providing guidance for City Administration to follow. To learn more about your current City Council, visit sprucegrove.org/Council.



Council meetings

Spruce Grove City Council typically meets three times per month (except in July, August and December). There are several types of Council meetings that, at first glance, may seem similar, but there are subtle nuances that set them apart.

City Council meetings

Regular City Council meetings are intended to provide a mechanism for decision making, and may include bylaw considerations, public hearings, discussions about business items, and question and answer periods in which community members can participate.

Committee of the Whole meetings

Committee of the Whole meetings are slightly less formal than Regular Council meetings and tend to include research, information and discussion sessions based on Council's strategic priorities. The Committee cannot make business decisions but can refer matters to Administration for review and research or provide recommendations in the form of motions for Council to consider.

Council will be considering amending the name and mandate of the Committee in spring 2023 to more clearly focus on governance, Council priorities, and policy matters.

Organizational meetings

Council holds an organizational meeting each year in the fall to schedule upcoming regular City Council and Committee of the Whole meetings and set committee appointments and seating arrangements.

Corporate Plan review meetings

Each fall, Administration presents a proposed Corporate Plan during a series of dedicated corporate plan review meetings. The Corporate Plan is then amended based on Committee of the Whole deliberations and Council direction.



Watch or participate in meetings

City Council meetings and Committee of the Whole meetings are open for public attendance and participation.

Watch

Watch a live stream or past recordings at sprucegrove.org/LiveCouncil, or attend in person in Council Chambers on the third floor of City Hall at 315 Jespersen Ave.

Participate

Members of the public may participate in a Public Input Session during a Council meeting by indicating they wish to speak when prompted by the Mayor. Virtual participation may be done by registering via email to cityclerk@sprucegrove.org or by calling 780-962-7615 before noon on the date of the meeting.

Alternately, residents can submit a statement or a question to be read on their behalf by emailing cityclerk@sprucegrove.org until the Public Input Session is complete.

Detailed participation information can be found at sprucegrove.org/PublicInputSession.

When do these meetings happen?

Mondays (or Tuesday if the Monday is a statutory holiday) at 6 p.m.

Virtually: sprucegrove.org/LiveCouncil

In-person: Council Chambers, third floor, City Hall, 315 Jespersen Ave.

Council meeting times may change. For meeting dates, times and agendas, visit sprucegrove.org/CouncilMeetings.

City Council contact information

- council@sprucegrove.org
- 780-962-7604
- For more ways to contact City Council, including links to their social media accounts, visit sprucegrove.org/Council

For more information on municipal government in Spruce Grove, read *Understanding Your Government and How it Works* on page 6.

UNDERSTANDING YOUR GOVERNMENT AND HOW IT WORKS

There are three distinct levels of government in Canada: municipal, provincial (or territorial), and federal.

- Municipal governments, like the City of Spruce Grove, establish rules and bylaws, and deliver services that support the municipality. Most often, municipal governments are cities or towns, but they can also be counties, villages, summer villages, municipal districts and improvement districts. Municipal governments provide services for the residents of their specific community, like fire protection, public transportation, snow removal, waste management, and maintenance of parks and green spaces.
- Provincial or territorial governments, like the Government of Alberta, have the authority to make decisions which affect the entire province or territory, but not the rest of Canada. This includes things like affordable housing and homeless supports, education, health care and hospitals, provincial taxes, and the age of majority.
- The Federal Government, also known as the Government of Canada, oversees things that affect the entire country, such as the postal service, national defense, the Supreme Court, passports, federal income tax, and employment insurance.



So, who does what?

For some programs or services, it's easy to tell which level of government is responsible for providing that program or service. For example, most things related to National Defense, the Canadian Armed Forces and Veterans Affairs are delivered by the federal government (Government of Canada). But for other programs and services, it's a little more challenging to make the distinction. There are also some programs and services that are jointly delivered by two or more levels of government. Refer to the chart to see some common programs and services, and which level(s) of government is/are responsible for providing them.

How are programs and services funded?

Municipal governments rely on a few primary streams of funding to deliver programs and services to residents:

- **Municipal property taxes**
- **Provincial and federal government funding**
- **Developer levies**
- **User fees**

Some programs and services, such as support for the unsheltered, addictions and mental health, have a degree of shared responsibility between the provincial and federal governments, which can make it challenging to know which level of government should take the lead on a specific topic or area. Additionally, when federal or provincial funding is not adequate or cut in a specific area, the impacts are generally felt most acutely at the municipal level forcing municipalities to provide these services.

As an organization, the City does advocate on behalf of its residents to other levels of government to ensure there is appropriate funding and supports in place. Residents can also reach out to their federal MP (Member of Parliament) or provincial MLA (Member of the Legislative Assembly) if they have concerns about funding that impacts municipal programs and services.

Government Roles and Responsibilities



MUNICIPAL GOVERNMENT

CITY OF SPRUCE GROVE



City Hall



Development and building permits and fees



Family and Community Support Services



Municipal police force (Parkland RCMP)



Local road maintenance and improvement



Parks, trails and playgrounds



Property tax (municipal portion)



Protective Services



Recreation facilities



Transit



Utilities (water, sewer, wastewater)



Waste collection (residential)



PROVINCIAL GOVERNMENT

ALBERTA



Employer and employee supports



Highways



Hospitals



Justice



Landlord and tenant supports



Post-secondary education



Property tax (provincial portion)



Safety enforcement



Schools



FEDERAL GOVERNMENT

CANADA



Airports



Borders and passports



Broadcasting and telecommunications



Canada Child Benefit



Employment insurance



Fisheries, oceans and national parks



Income tax



International travel and support for Canadians abroad



Mortgages



National RCMP



National defence and veteran's affairs



Postal service



Student loans



Social services



Affordable housing and homeless supports

Your municipal government

The City of Spruce Grove is a full-service municipality which is proud to provide a wide range of services and programs to our residents. So how many people does it take to run a local government? You might be surprised. There are over 300 people who work in several departments to deliver the programs and services we all rely on every day. Below is a breakdown of the different people who make the City “tick”, and why residents like you play such an important role.

Spruce Grove residents

As a resident, you play a crucial role in the structure and evolution of the City. By electing members of City Council, you hold an important civic responsibility in selecting the leaders and decision makers of our community. You can attend City Council and Committee of the Whole meetings, participate in consultation opportunities, and volunteer to serve on boards, committees, and task forces. By getting involved, staying informed, and voting in municipal elections, you play an active role in helping to shape the future of Spruce Grove.

Mayor and Council

The City of Spruce Grove is governed by a City Council consisting of a mayor and six councillors who are each elected to a four-year term. The current City Council was elected in October 2021 and will serve until the fall of 2025, at which time the next municipal election will take place. Councillors in Spruce Grove are elected “at large”, meaning there are no wards or zones; each Councillor represents each citizen. Members of Council are responsible for making informed decisions about bylaws and policies, approving operating and capital budgets, representing the City on various boards and committees, providing oversight to Administration through accountability processes, and setting the overall strategic direction of the City. Learn more about your City Council at sprucegrove.org/Council.

City Manager

The City Manager plays a key leadership role as the liaison between City Council and City Administration. As Council’s only employee, the City Manager is the administrative head of the City and is responsible for the overall management of the organization. The City Manager informs Council about day-to-day operations and ensures policies, programs, and the Strategic Plan are implemented.

Administration

Administration is comprised of the people who work in departments throughout the City to provide the programs and services directed by Council as outlined in both the 2022-2025 Strategic Plan and 2023-2025 Corporate Plan. Members of Administration specialize in various areas of expertise, and also act as subject matter experts to support Council in making informed decisions.





CITY HALL

Shentfield Centre 315 Jespersen Avenue

IMPLEMENTING COUNCIL'S VISION FOR THE CITY OF SPRUCE GROVE



A look at what's being planned in 2023

Each year, Spruce Grove City Council approves a three-year Corporate Plan, which is the City's guiding document for governance, community development, and service delivery. The 2023-2025 Corporate Plan was approved by Council in December 2022 and focuses on two areas:

- Implementing Council's priorities from their 2022-2025 Strategic Plan, which outlines their vision for the future of Spruce Grove.
- Investing in the municipality to create a strong foundation of long-term sustainability.

The Corporate Plan outlines the necessary investments to address these priorities, how they will benefit the community, the financial requirements to support this direction, and how we are going to focus our efforts moving forward.



*“WE RECOGNIZE THE IMPORTANCE OF INVESTING IN OUR COMMUNITY, BOTH THROUGH THE VISION OUTLINED IN COUNCIL’S STRATEGIC PLAN AND BY PROVIDING SERVICES THAT ADDRESS THE NEEDS OF OUR RESIDENTS. THIS CORPORATE PLAN WILL ALLOW US TO MAKE THOSE INVESTMENTS THAT WE NEED BOTH TODAY, AS WELL AS IN THE FUTURE AS OUR CITY CONTINUES TO GROW.” - **MAYOR JEFF ACKER***

2022-2025 Strategic Plan

In 2023, there will be a significant focus on implementing Council’s vision for Spruce Grove as outlined in the 2022-2025 Strategic Plan. This will include:

- Implementing a formal mural program and adding new public art to the community.
- Creating a new Community Development Framework and Fiscal Stewardship Framework.
- Updating the City’s Social Sustainability Plan, Municipal Development Plan, and Economic Development Strategy and Action Plan.
- Developing a new Community Standards Bylaw.
- Developing an implementation plan for the City’s Climate Change Action Plan.
- Installing the necessary infrastructure for public electric vehicle charging stations throughout Spruce Grove.

The full Strategic Plan can be viewed at sprucegrove.org/StrategicPlan.

Investing in the municipality

In addition to investments that are necessary to deliver on the Strategic Plan, the Corporate Plan also includes investments to address cost pressures and ensure long-term sustainability of the municipality.

This will include:

- The Civic Centre facility, which will be the largest capital project in Spruce Grove history.
- The Spruce Grove Transit Centre.
- The City Centre Area Redevelopment Plan, which is focused on revitalizing the area and making the City Centre a place where people of all ages come to shop, dine, work, live, socialize, interact and participate in a variety of community, arts and cultural experiences.
- Spruce Grove – Stony Plain Trail.

The full 2023-2025 Corporate Plan document is available at sprucegrove.org/CorporatePlan.

What is a Corporate Plan?

As a municipal government, the City of Spruce Grove is responsible for infrastructure, programs, and services that directly impact the day-to-day lives of City residents. This includes transportation networks (roads and trails), utility services and structures (water, sanitary sewer, stormwater and solid waste), and parks and open spaces, as well as funding community facilities such as the TransAlta Tri-Leisure Centre and the Spruce Grove Public Library. The Corporate Plan outlines the resources required to deliver these programs and services, provide funding to the community, as well as implementing Council’s vision for the City of Spruce Grove, as described in the 2022-2025 Strategic Plan.



RECYCLING, ORGANICS, AND WASTE COLLECTION IN SPRUCE GROVE

The City of Spruce Grove has a comprehensive waste collection program that includes recycling, organics, and residential waste collection, an Eco Centre and several seasonal events, including Large Item Pick Up, Free-cycle, Shred-4-Free, and E-roundup.



Recycling, organics, and waste collection

The City's residential waste collection program includes three components:



Garbage – black waste carts are collected weekly.



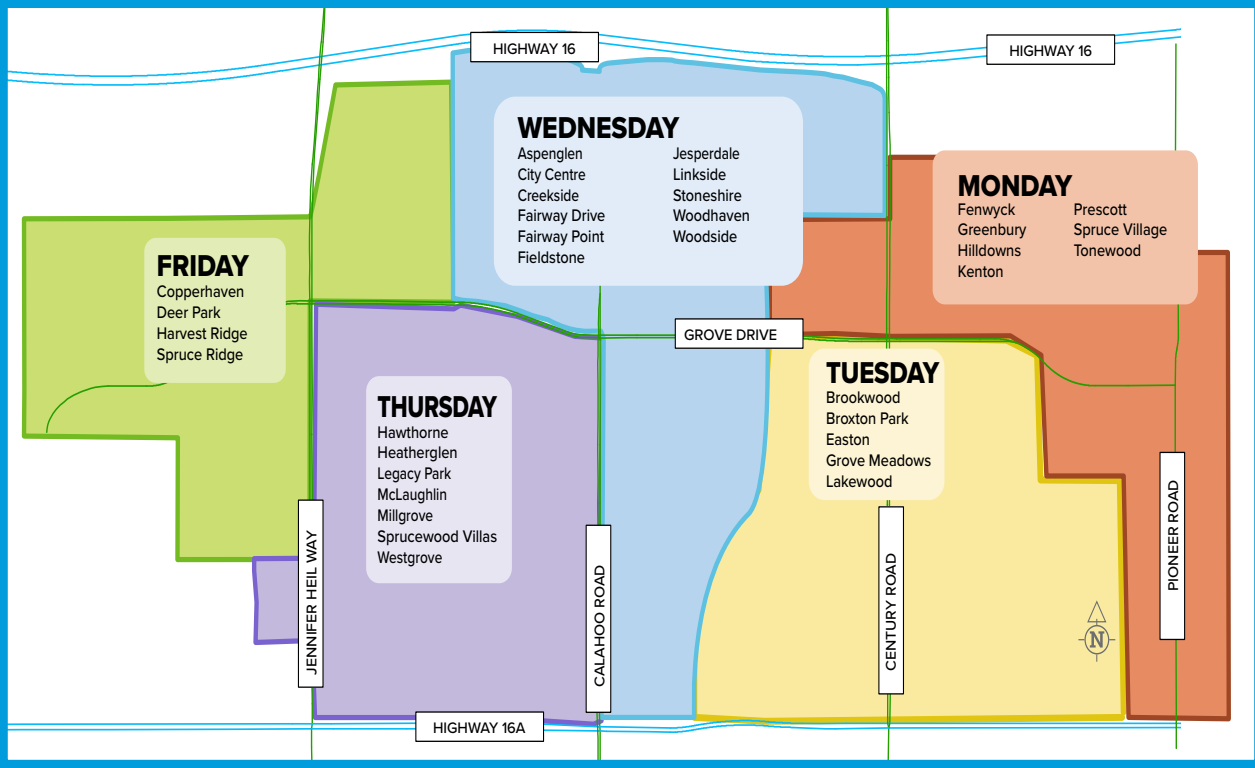
Organics – green organics carts are collected weekly from mid-April to mid-November and monthly from December to March.



Recycling – blue recycle bags are collected weekly.

IN 2022, SPRUCE GROVE RESIDENTS
DIVERTED AN AVERAGE OF
110 KG OF RECYCLING
PER HOUSEHOLD AND
253 KG OF ORGANICS
PER HOUSEHOLD FROM THE
LANDFILL. WAY TO GO!

Check the map below to find your collection day. Residential collection days do not change on statutory holidays except on Monday, Dec. 25, 2023 and Monday, Jan. 1, 2024. Visit sprucegrove.org/Waste for holiday impacts.



Never miss a collection day again! Subscribe to waste collection reminders through text, email or phone calls at sprucegrove.org/Sort

Eco Centre

How do you dispose of items that can't go in your black waste cart, green organics cart or blue bag, like old furniture, electronics or cans of paint? That's when a trip to the Eco Centre is in order! The Eco Centre is a drop-off facility where residents can take hazardous household waste, glass jars, tires, propane tanks and large items like mattresses and appliances. Some items are subject to a disposal fee.



50 Diamond Ave.



Monday to Saturday: 10 a.m.–5:30 p.m.
Sunday: Closed
Statutory holidays: Closed



sprucegrove.org/EcoCentre

Sort with **Success**

Before you toss it, make sure you are putting it in the right place! Download the City's free waste sorting tool to:

- find out what goes where,
- sign up for collection reminders,
- receive waste sorting tips,
- and learn about seasonal events.

Search "Trim Your Trash" in the Apple App Store or Google Play or scan one of these QR codes.



ANDROID



APPLE

Residential waste collection requirements

The following guidelines are in place to help ensure successful collection, minimize spillage, and maintain an efficient process to save time and resources.

- Put your carts/blue bags out by 7 a.m. on your collection day.
- Place your carts on the street against the curb or at the edge of your alley.
- Point the arrows on top of carts towards the roadway or alley.
- Ensure there is at least one metre's length of clearance on all sides of the carts.
- Ensure all cart lids are fully closed.
- Maximum weight is 200 lbs.

DID YOU KNOW?

IF YOU MOVE, PLEASE LEAVE THE CART BEHIND FOR THE NEXT OCCUPANT. IF YOUR CARTS NEED TO BE REPAIRED OR REPLACED, OR YOU MOVE INTO A PROPERTY WITH NO CARTS, CALL 780-962-7584.



Catch it

Use a kitchen catcher lined with newspaper or a certified compostable bag as a clean, convenient, and low-odour way to easily collect food waste.

If you need a replacement kitchen catcher, or if you don't already have one, you may pick one up free of charge at one of the following locations:

Eco Centre

50 Diamond Ave.
Monday through Saturday
10 a.m. to 5:30 p.m.

Public Works

21 Century Close
Monday to Friday
8:30 a.m. to 4:30 p.m.

TRANSFORMATION IN PROGRESS

Work continues on City Centre revitalization project



**Artist rendering/subject to change*



**Photos courtesy of ISL Engineering*

After a busy construction season in 2022, work will continue this year on a streetscape revitalization project in Spruce Grove's City Centre along McLeod Avenue and Main Street.



*Photos courtesy of ISL Engineering

This project is one element of the larger City Centre Area Redevelopment Plan (CCARP) that is focused on revitalizing the area and making the City Centre one of Spruce Grove's main commercial and social destinations.

The streetscape revitalization project is focused on creating a more pedestrian focused environment by improving sidewalks and street crossings, while also incorporating more trees and landscaping. Much of the underground infrastructure is also being rehabilitated or replaced to service area businesses and residents, while also creating the opportunity for new development.

Last year most of the construction work was beneath the surface and included the installation of new water main and sanitary sewer lines, as well as underground utility installation.

For the 2023 construction season, much of the work will shift to above ground, including new concrete and asphalt, the new centre median within McLeod Avenue, new curbs and sidewalks, landscaping, and the installation of new street furniture like benches. Back alleys in the City Centre area are also scheduled to be paved this year.

At times, there will be temporary road closures in the area to accommodate this redevelopment work.

Businesses in the City Centre remain open during the construction and the community is encouraged to continue supporting them throughout this temporary disruption in the area. An interactive map of City Centre businesses and parking locations can be viewed at sprucegrove.org/CityCentreOpenForYou.

Work on the streetscape revitalization project is expected to wrap up in the fall of 2023. For more details and to sign up for project updates, visit sprucegrove.org/CCARP.

Columbus Park redevelopment complete

The transformation of Columbus Park, located in the heart of the City Centre, was completed last year to create a welcoming and open space that can now be used for gathering and public events in all seasons.

Members of City Council and community partners celebrated the opening of the revamped park with a ceremonial ribbon cutting in September.

Located at the intersection of McLeod Avenue and Main Street, the updated Columbus Park has improved seating and shelter, new greenery and lighting, and a permanent stage.

This project was a significant milestone for the City Centre Area Redevelopment Plan, which provides a framework for guiding the revitalization of the City Centre to create a vibrant, mixed-use space.





Now is the time for us to look forward and shape our future.

Spruce Grove is a city that is growing and evolving. Imagine the possibilities of what Spruce Grove can be 10 years, 20 years or even 30 years from now.

For more information visit sprucegrove.org/ShapingSG



STRATEGIC PLAN 2022-2025

The 2022-2025 Strategic Plan outlines City Council's vision for the future of Spruce Grove. It captures Council's commitment to the community and is organized into four main themes:



Community Connections



Economic Prosperity



Environmental Sustainability



Governance in Action

A living document that is reviewed annually, the Strategic Plan sets the priorities and goals Council wishes to accomplish over the course of their term and guides City Administration in their work.

The full Strategic Plan is available to view online at sprucegrove.org/StrategicPlan.



SPRUCE GROVE TRANSIT

The City of Spruce Grove has a variety of transit options to help residents get around the community and the region.



SPRUCE GROVE TRANSIT CON'T

Commuter Transit to Edmonton

Route 560 transports commuters between Spruce Grove and NAIT, Grant MacEwan, and downtown Edmonton on weekdays (except statutory holidays). For a full schedule, fares and to see the live location of the bus, visit sprucegrove.org/CommuterTransit.

On-demand local transit

Earlier this year, Spruce Grove's on-demand local transit service integrated with Stony Plain Transit and Acheson Transit to establish a single, on-demand local transit system. The integrated system creates more flexibility in local transit services and allows users to book rides on-demand in and around Stony Plain, Spruce Grove, Acheson, and Parkland Village through a single booking platform.

There are over 500 pick-up and drop-off locations. Riders can easily book a trip in one of the following ways:

- Download the Pick-Up On-Demand app from Google Play or the Apple Store
- Book online at book.pickup.rideco.com
- Call 780-962-8747 between 6 a.m. and 7 p.m.

On-demand local transit service within Spruce Grove and Stony Plain operates weekdays (except statutory holidays) from 6 a.m. to 7 p.m. Acheson and Parkland village operates from 6 a.m. to 9 a.m. and from 3 p.m. to 6 p.m.

For details including booking instructions and fares, visit sprucegrove.org/OnDemandTransit.

Accessible Transportation Service

Accessible Transportation Service (ATS) offers door-to-door transportation for seniors (65+) and persons (16+) with mobility or cognitive disabilities within Spruce Grove, Stony Plain and specific areas of Parkland County. Residents can book ATS for:

- Medical appointments
- Shopping trips
- Accessing entertainment

Each ATS shuttle or passenger van is equipped with a lift or ramp to accommodate mobility devices.

For details, including operational hours and fares, visit stonyplain.com/ATS.



Tap and Go with Arc, a new fare payment system

Transit riders no longer need to mess around with cash, paper tickets or passes to pay for transit rides. A new electronic payment system is available that makes paying for transit more convenient!

The Arc system uses a tap-on, tap-off card to track rides on transit buses and LRT throughout the region. Tapping on and off for each leg of your journey ensures you are charged the lowest fare for your trip. Money is stored in a secure online account and customers use their account to add funds and manage lost or stolen cards.

Arc is currently available for standard adult fare riders and U-Pass riders. It is expected to roll out to other fare groups later in 2023.

Find out how it works and sign up at myArc.ca.

Spruce Grove Transit e-Bulletin

There's an easy way to find out about events that may impact your travel! Sign up for Spruce Grove Transit's e-Bulletin. You'll receive email updates about schedule changes, bus stop closures, major delays and construction notices.

Sign up at sprucegrove.org/TransitEBulletin.

PROTECTIVE SERVICES FACEBOOK PAGE!



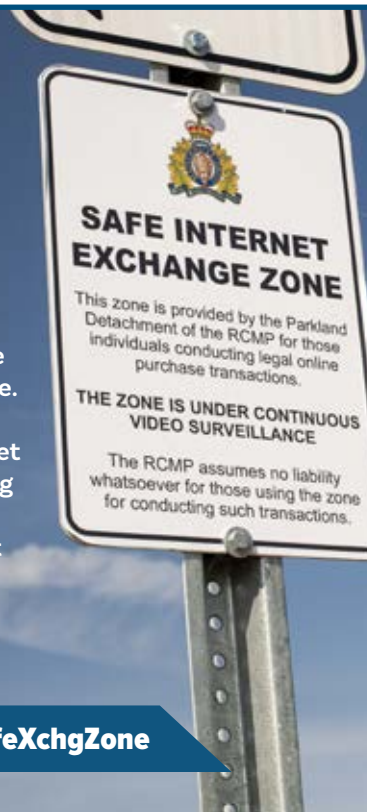
Did you know Spruce Grove Protective Services has its very own Facebook page? Follow us for information about active emergency situations which affect the public, upcoming events, prevention and education campaigns, recruitment efforts and a look at the lighter side of keeping Spruce Grove safe!

Facebook.com/SpruceGroveProtectiveServices

DID YOU **KNOW?**

The Parkland RCMP detachment has a Safe Internet Exchange Zone. It helps provide a safe place for people to meet when buying and selling items online. Find it in the front parking lot at 91 Campsite Road in Spruce Grove.

sprucegrove.org/SafeXchgZone



SEE CLICK FIX

A quick and easy way to report an issue to the City

SeeClickFix is an online tool that makes it easy to report non-emergency issues to the City. Available 24/7 on the City's website or via an app, you can report some of the most common issues like missed waste collection, potholes, sidewalk issues, and litter.

There is no need to wait for regular business hours to submit your issue. You can also upload a photo of your issue, track the status of your request, and view previously reported issues.



sprucegrove.org/SeeClickFix

CIVIC CENTRE PROJECT

**Artist rendering/subject to change*



Work has officially started on the Civic Centre, which will be the single largest project the City of Spruce Grove has ever done.

Located north of Westwind Drive in the Westwind development, the 125,000 square foot facility will provide a mix of recreational and cultural amenities for residents, including:

- A spectator arena
- A community arena
- A satellite location for the Spruce Grove Public Library
- A black box theatre, designed with multi-use capabilities
- An art gallery and dedicated program room
- A community walking track

The City worked closely and consulted with residents, stakeholders and experts to develop the concept for the Civic Centre, which addresses critical ice shortages and expands arts and culture opportunities in the community.

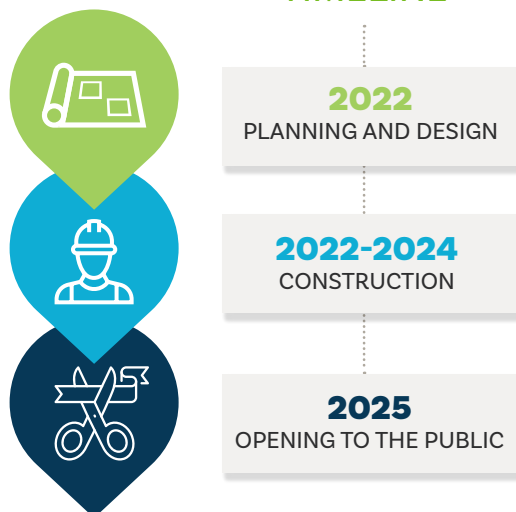
The Civic Centre project has been made possible through the support of several stakeholders including the Government of Alberta's Municipal Sustainability Initiative, a funding contribution from Parkland County, the support of the Town of Stony Plain, and other partners and groups.

For more details and renderings of the building, visit sprucegrove.org/CivicCentre.



Spruce Grove City Council celebrated the start of the Civic Centre project with an official groundbreaking event in November 2022. Council was joined by Spruce Grove-Stony Plain MLA Searle Turton, Town of Stony Plain Mayor William Choy, Parkland County Mayor Al Gamble, and representatives from PCL Construction, GEC Architecture and Cantiro.

TIMELINE



UNLEASH THE FUN!

Bring your dogs to play at one of Spruce Grove's two off-leash parks:

- Cpl. Jim Galloway Memorial Off-Leash Area, 51 Century Close (fenced with a designated section for small dogs)
- Marlboro Off-Leash Park, south of Marlboro Drive (not fenced)

To help ensure everyone has a safe and enjoyable time, review the off-leash park etiquette before you go: sprucegrove.org/OffLeash. And always remember to scoop that poop!



sprucegrove.org/OffLeash

DID YOU KNOW?

Spruce Grove Family and Community Support Services offers programs to support social connections, resiliency, and overall well-being. Check out our upcoming programs and register online at sprucegrove.org/FCSSPrograms.



sprucegrove.org/FCSSPrograms





Recognize an outstanding member
of our community and nominate them
for an Award of Excellence!

Nominations must be received by April 30
to be considered for this year's awards.

sprucegrove.org/AOE



Canada

HORIZONSTAGE.COM | 780-962-8995

THERE'S SOMETHING FOR EVERYONE!

Horizon Stage is an intimate and acoustically superb 318 soft-seat venue in Spruce Grove. We offer a variety of music, theatre, comedy, dance, and family performances as well as rental opportunities.





City Hall

315 Jespersen Ave. T7X 3E8

Phone: 780-962-2611

Monday to Friday 8:30 a.m. – 4:30 p.m.

sprucegrove.org