

citypulse

SUMMER 2017

Your connection to the City of Spruce Grove

**Year in
Review**
page 41

**PARKS
PLAYBOOK**
EXPLORE & WIN!
page 15



 The City of
SPRUCE GROVE
www.sprucegrove.org

CANADA DAY SNEAK PEEK! – SEE PAGE 10

City Directory

CITY OF SPRUCE GROVE

Phone: 780-962-2611

Fax: 780-962-2526

Emergency Numbers

Police, Fire, Ambulance 911

Animal Control	780-962-7585	Lot Grading	780-962-7634 ext 174
Arena/Agrena	780-962-2031	Mayor and Council	780-962-7604
Building Permits	780-962-7582	Permit Inspections Hotline	780-962-7576
Business Licences	780-962-7588	Planning and Development	780-962-7582
City Hall Ticket Centre	780-962-8995	Public Library	780-962-4423
Compliance Requests	780-962-7582	RCMP	
Dangerous Goods Routes	780-962-4496	• Administration	780-962-2289
Development Complaints	780-962-7582	• Complaints	780-962-2222
Development Permits		Recreation Services	780-962-7579
• Commercial	780-962-7582	Roads, Parks Maintenance, Residential Waste, Water and Sewer Trouble (24 hour)	780-962-7584
• Residential	780-962-7634 ext 173	Seasonal Sports Field Hotline	780-962-7602
Districting/Zoning	780-962-7582	Specialized Transit Service (STS)	780-962-2456
Economic Development	780-962-7608	Street Light Repairs (Fortis)	780-310-9473
Enforcement Services		Taxes	780-962-7634 ext 119
• Complaints	780-962-7586	TransAlta Tri Leisure Centre	780-960-5080
• Inquiries	780-962-7585	Transit (ETS Bus Link – 24 hour)	780-442-5311
Engineering	780-962-7582	Tourism/Visitor Information	780-962-2561
Facility Bookings	780-962-7579	Utility Billing	780-962-7597
Family and Community Support Services (FCSS)	780-962-7618	Utility Hook Ups	780-962-7597
Fire Services – Administration	780-962-4496		
Human Resources	780-962-7634 ext 107		



Serving the
community of choice



Meet your council

Pictured left to right: Alderman Ed McLean, Alderman Louise Baxter, Alderman Wayne Rothe, Mayor Stuart Houston, Alderman Bill Kesanko, Alderman Bill Steinburg, Alderman Searle Turton

Mayor and Council – 780-962-7604 council@sprucegrove.org



Meetings to go

Interested in attending a Spruce Grove City Council meeting or Committee of the Whole meeting, but not able to make it to City Hall? We've got you covered. The City posts podcasts of every meeting online the day following the meeting. Depending on your browser type and viewing device, the podcast file will either be downloaded directly to your desktop or streamed over the Internet. For more information and the three most recent podcasts, visit www.sprucegrove.org/podcast.



Council meeting dates at a glance

Spruce Grove City Council meetings and Committee of the Whole meetings typically occur on Monday evenings (or Tuesday, if the Monday is a statutory holiday), starting at 5 p.m. in council chambers on the third floor of City Hall. All council meetings are open to the public. Dates can change so for the most up-to-date council meeting calendar, visit www.sprucegrove.org/calendar.

Summer – Spruce Grove style!

Welcome to summer in Spruce Grove! It's the time of year when the city truly comes alive, as residents emerge from their homes after a long winter hibernation, anxious to soak up the sunshine, reconnect with family and friends, and take advantage of the many exciting events and activities that are happening just outside their front door.

The warm weather and long summer days make it an ideal time of year to go on an adventure right here in Spruce Grove and with so much going on, there's no excuse not to go exploring! A popular destination for many residents is the City's annual Canada Day Celebration held on July 1 in Jubilee Park (see page 10). And this year is sure to be extra special, as it's also Canada's 150th anniversary of Confederation, so make plans to join the party and celebrate what it means to be Canadian!

If you'd prefer an adventure that you can extend throughout the summer, check out the special Parks Playbook in this issue of CityPulse (see page 15). We're highlighting 10 of our local parks and playgrounds and inviting you to visit them over the coming months. As an added incentive, we're including a contest that will test your knowledge of the featured parks and the grand prize is a family photo session (and wouldn't a local park make a great back drop?)!

One destination that is sure to be hopping this summer is the new spray park in Jubilee Park (see page 28). Expected to open in July, this much-anticipated amenity has more than 50 interactive and integrated play features including a toddler zone and two family zones. A perfect place to spend a sunny afternoon, bring your swimsuits (yes, there are

change rooms!), sunscreen and towels and get ready to beat the heat.

Or, if you're more of a homebody, you can still enjoy the season in your own back yard. Perhaps you have plans to build a deck or install a new hot tub to make your yard your own private sanctuary. Just keep in mind that before you begin any construction or home improvement projects, you need to check with the City to determine if you need any permits (see page 32).

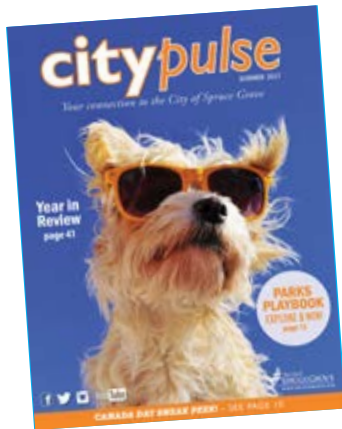
Organizing a block party (see page 9) is another great way to have an adventure that involves the entire neighbourhood! Simply register your party with the City and receive a helpful guide that includes invitations, icebreaker activities and a contact list. Then roll out the barbecues, pull out the lawn chairs and meet the other people who live on your street.

Our friends at the Spruce Grove and District Agricultural Society, the Spruce Grove Chamber of Commerce and the Spruce Grove City Centre Business Association also plan some great events throughout the summer, including a heritage carnival and harvest fair at the Spruce Grove Grain Elevator Museum site and monthly markets, the Taste of Spruce Grove and Cruise Nights in the city centre. Check out their social media accounts for more details and stop by any or all of their events for some fantastic summer fun.

It's shaping up to be a fun-filled summer in the city so get out and have an adventure right here in your community of choice. We look forward to seeing you out and about in Spruce Grove!



Contents



In Every Issue

9 City Minute

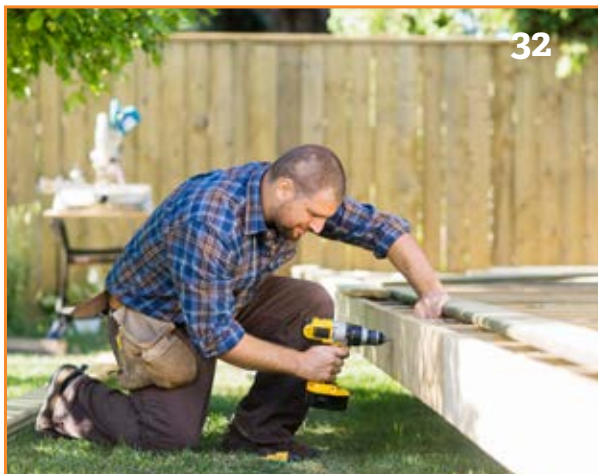
A quick glance at what's happening around Spruce Grove.

31 Waste collection

Find out how and when to put your trash, recycling and compost out for pick up.

40 City facility rentals

The City has a variety of rental facilities, including halls, sports fields and meeting rooms.



Cityscape



6 Council considers proposal for multi-use facility

Concept would spearhead largest development in City's history.

8 Spruce Grove votes!

Residents will officially go to the voting station this fall for the upcoming municipal election.

28 Opening soon!

New spray park to open in July.

32 Home improvement

Find out if you need a permit for that summer renovation project.

38 Road work ahead!

Learn about upcoming summer road construction projects.

40 FoOtlights summer drama classes

A place for kids to play, pretend and let their sillies out.

Home & Life

10 Canada Day Celebration

Celebrate Canada's 150th anniversary of Confederation in Jubilee Park.

30 Spruce Grove Trim Your Trash

Download the mobile app!

34 Reducing the risk

Your role in preventing and responding to trail fires.

36 Every drop counts

Learn how simple changes can conserve water and save you money this summer.

Features

15 Spruce Grove Parks Playbook

Visit 10 parks in Spruce Grove, capture your experiences and enter to win!

41 Year in Review

A look back at 2016 in Spruce Grove.



Upcoming events

e-roundup

June 6 – 24

www.sprucegrove.org/eroundup

Free-cycle

June 10 – 11

www.sprucegrove.org/freecycle

Large item pickup

June 12 – 16

www.sprucegrove.org/largeitem

Shred-4-Free

June 17

www.sprucegrove.org/shred

Canada Day Celebration

July 1

Jubilee Park

www.sprucegrove.org/celebrate

Tri-Municipal Region's

Registration Fair

Aug. 24

6 – 8:30 p.m.

TransAlta Tri Leisure Centre

www.sprucegrove.org/infofair

Council considers proposal for multi-use facility

Concept would spearhead largest development in City's history

A concept for a new venue that would be capable of hosting concerts, conferences, graduation ceremonies and sporting tournaments is currently being considered by Spruce Grove City Council.

The proposal, which is to develop a \$79 million Multi-Use Sport and Event Centre on the Westwind Centre lands, was brought forward to city council this past March.



CONCEPT RENDERING



The proposed municipally-owned facility would feature:

- A large spectator bowl that can accommodate up to 5,300 people (3,500 fixed seating expandable to 5,300 for concerts and similar events);
- A community ice pad that could fit up to 200 spectators seated or standing;
- A main concourse with access to seating, washrooms and concessions; and
- Private suites that will be available for the spectator bowl.

The main spectator bowl could be reconfigured to accommodate a variety of events, including craft fairs, trade shows, memorials, awards ceremonies and musical performances, while the smaller surface would be dedicated for community recreational use.

This type of multi-use facility aligns with the City's original vision for the Westwind development, which is located

along Yellowhead Highway and the Century Road interchange, to be a major regional commercial, hospitality and entertainment destination.

With the community's rapid growth, it also addresses the need for additional ice surfaces as well as space for both local and commercial events.

The City is currently working with a variety of potential partners to investigate funding options and opportunities. The intent is to design the funding model so there is no tax increase to ratepayers in Spruce Grove.

The event centre is connected to the larger overall development of Westwind Centre that will include office buildings, retailers, restaurants, an entertainment centre, transit park and ride, and residential development.

It is expected city council will vote on whether or not to proceed with the project in January 2018. If the project moves forward, the facility is expected to open in the fall of 2020.



For more information on the proposed Multi-Use Sport and Event Centre, visit www.sprucegrove.org/SEC.



Spruce Grove residents will officially go to the voting station this fall for the upcoming municipal election. Voters will elect one mayor and six aldermen to a four year term.

Candidate registration

Candidates who intend to run for a spot on Spruce Grove City Council in this fall's municipal election and plan to accept campaign contributions must register as a candidate before accepting any campaign contributions. The registration form is available online at www.sprucegrove.org/election.

Important dates:

Monday, Sept. 18 – Nomination Day

Candidates must file their nomination forms in person (by the candidate or a representative) between 10 a.m. and 12 p.m. at City Hall. Nomination forms must be signed by 25 eligible voters to be accepted and must be accompanied by a deposit of \$100 in the form of a certified cheque, money order or cash.

Monday, Oct. 16 – Election Day

Voting stations will be open from 6:30 a.m. to 8 p.m. Station locations and voter identification requirements will be made available in the coming months. Advance voting options will also be available – stay tuned for dates and locations.

For the most up-to-date election information visit www.sprucegrove.org/election.

Timberlake for mayor!

Grade 6 students participate in mock election

A group of local Grade 6 students elected Justin Timberlake as Spruce Grove's mayor in a mock election designed to teach them about municipal elections and the voting process.

City staff organized the mock election day, held on March 7, for approximately 450 students from five area schools. The event included an overview of municipal government and city council, as well as information on running for office, who can vote in an election and how to complete a ballot.

"This is the first time we have organized a full-day mock election for area students," saidCarolynn Grey, Deputy City Clerk. "We viewed it as a great opportunity to teach them about elections and the voting process to hopefully help form the habit of citizen engagement at an early age."

It also connected with Grade 6 school curriculum on elections and voting. Prior to the mock election, teachers were provided with a list of candidates and their platforms so they could discuss them in class and talk with students about making an educated vote.

As part of the mock election, students were able to complete a real ballot to vote for the offices of mayor and aldermen. The ballots were electronically tabulated on site using the same type of equipment that is used during a real election to provide students with an authentic experience.

OFFICIAL RESULTS FOR THE 2017 STUDENT MOCK ELECTION

Office of Mayor		CANDIDATE	TOTAL VOTES RECEIVED	Office of Alderman		CANDIDATE	TOTAL VOTES RECEIVED
		BUBLÉ, Michael	75			BIEBER, Justin	149
		CYRUS, Miley	64			GOMEZ, Selena	201 - elected
		TIMBERLAKE, Justin	221 - elected			GRAHAM, Aubrey "Drake"	208 - elected
						GRANDE, Ariana	226 - elected
						JONAS, Nick	155
						LOVATO, Demi	180 - elected

CITY MINUTE

Don't forget!

Annual tax payments are due by June 30, 2017, and supplementary taxes are due 30 days after the mailing date. Payment options include pre-authorized monthly installments, by mail, at City Hall or through your financial institution. And don't delay – a penalty of 2.5 per cent of the unpaid balance is applied to your bill for each month that payment is not received.



www.sprucegrove.org/taxpayments

Bargain hunt

Love the thrill of finding a bargain? Or are you looking to unclutter your basement? Either way, take advantage of the City's free garage sale advertising program to promote and find garage sales in Spruce Grove.



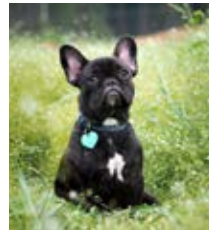
www.sprucegrove.org/garagesales

Transit service

Spruce Grove's commuter transit service offers weekday service to Edmonton during morning and afternoon peak hours. Route 560 includes stops at NAIT, MacEwan University and Edmonton's downtown core. Route 562 provides service to West Edmonton Mall, the South Campus/Fort Edmonton Park LRT station and Acheson Industrial Area (south). Transit passes are available at City Hall, the Border Paving Athletic Centre (credit card or debit only) and several local retailers.



www.sprucegrove.org/transit



Doggy ID

The City has recently introduced new dog identification regulations. A municipal licence is no longer required, but dog owners must identify their animals with a tag that displays a current phone number and the tag must be

attached to a collar or harness that is worn by the dog when off the owner's property.

www.sprucegrove.org/pets

Party time

A block party is the perfect opportunity for neighbours to come together, meet each other and have fun! Friendships amongst



neighbours result in safer, more caring communities. When you register your event with the City's Block Party program, you will receive a helpful kit full of tips and tools to make your party a success. As well, there are a limited number of \$100 food vouchers available, courtesy of Spruce Grove FCSS and Safe City, for eligible parties held between May 20 and Sept. 10.

www.sprucegrove.org/blockparty

Summer storage

If you own a recreational vehicle, you are permitted to park it on an authorized driveway in your front or side yard between May 1 and Oct. 31. The RV must be safely parked and can't project onto the sidewalk or street, or create a negative impact on your neighbours' enjoyment of their property.

www.sprucegrove.org/RVstorage





CITY OF SPRUCE GROVE
CANADA DAY
Celebration

JULY 1, 2017 – JUBILEE PARK

*Join us for a full day of fun as we celebrate
Canada's 150th anniversary of Confederation!*

Getting there >>>>

The Canada Day Celebration is held at Jubilee Park, located at 510 Grove Dr., east of Jubilee Village. There is no on-site parking and parking in the nearby residential areas is discouraged (and could result in a tow and a ticket!). There are several alternate ways you can get to the celebration.



Walk

Enjoy the many trails that lead to Jubilee Park or park in Greystone Centennial Middle School's transit lot, located at 130 Greystone Dr., and walk to the celebration.



On two wheels

Hop on a bike and ride down to Jubilee Park. There will be several bike racks on site or you can wheel into the manned bike valet.



Accessible parking

Accessible parking with shuttle service will be available in front of Greystone Centennial Middle School. A limited amount of wheelchairs are available on site.



Park and ride

A free park and ride service will run approximately every 20 to 30 minutes. The school buses will be able to transport strollers for the ride.

No animals, with the exception of service dogs, are permitted on the buses.

Visit www.sprucegrove.org/parkandride for locations.

NEW drop off location! This year the park and ride drop off location at Jubilee Park will be in the Greenbury neighbourhood, along Greenbury Boulevard. Bus departures from Jubilee Park will continue to be located along Grove Drive.

www.sprucegrove.org/celebrate

Volunteer!

Be part of the excitement! Volunteers make great events possible and we need you to assist with Spruce Grove's Canada Day Celebration. Opportunities exist for individuals and non-profit organizations to take part.

Volunteer opportunities include:

- Pre-event set up and post-event tear down
- Helping with KidZone
- Hosts
- Bus greeters
- Monitoring park and ride sites
- Providing on-site traffic control



Looking for a fundraiser? Groups have an opportunity to earn funds for volunteering through the Community Service Partnership Program, an initiative that allows groups to donate time in exchange for an honorarium. For more information, email events@sprucegrove.org or visit www.sprucegrove.org/CDvolunteer.

Planning your day

Have a safe and enjoyable time at the Canada Day Celebration. When planning your day, please keep these tips in mind:

- All events are outdoors, so check the weather forecast before you leave, dress appropriately and be prepared.
- Dog owners are strongly encouraged to leave their pets at home.
- Smoking is only permitted in designated smoking areas on the site.
- Alcohol is not permitted outside of the designated beverage tent.
- Fire pits will be closed for the day of the celebration.
- Bring cash and/or your bank card. Most vendors only take cash; ATMs will be on site.
- Bring a reusable water bottle to fill up on site.



It's the sesquicentennial!

The sesqui-what?

The ses•qui•cen•ten•ni•al.

We know it's a mouthful. It means 150th anniversary, and because 2017 marks the 150th anniversary of Confederation, this year is Canada's sesquicentennial. Now try saying that 10 times fast!



Did you know?

The City of Spruce Grove has planted the Canada 150 tulip, also known as the Maple Leaf tulip, throughout the community! Look for this beautiful tulip, which blooms in the colours of Canada's flag, in Jubilee Park, Columbus Park, Central Park, around the Fire Hall and City Hall, and along Highway 16A east.



Giving back

Parkland Food Bank

Everyone is encouraged to bring a non-perishable food item or cash donation for the Parkland Food Bank.

Donation boxes will be available near the information tents.

Together we can make a big difference as we gather to celebrate our community and Canada's 150th anniversary!





What's new this year? >>>>

To celebrate Canada's 150th anniversary of Confederation, we've decided to bring some NEW activities to the party! We'll still have many of our popular favourites, including the climbing wall, laser tag, crafts, face painting and a photo booth, but we're also very excited to welcome some new activities to Jubilee Park this year that will appeal to people of all ages!

Spray park grand opening

9:15 a.m.

Celebrate the official grand opening of the new spray park in Jubilee Park! Watch the ribbon cutting ceremony and then get ready to splash around and cool down as the park will open to the public for the first time on Canada Day. Be sure to bring a towel and dry clothes to play on the inflatables after splashing!



Bump, Set, Spike volleyball tournament

9:30 a.m.

Come out and play in a grass tournament open to players ages 16 years and up. It will be a double elimination, coed format where two females must be on the court at all times. There will also be one volleyball court open for spontaneous play throughout the day.

For costs and registration information visit: www.sprucegrove.org/bumpsetspike

Check off #96 on the ParticipACTION 150 Play List! (it's not quite beach volleyball, but close enough!)

Orienteering

10 a.m. to 6 p.m.

Unscramble letters, search for clues and learn about Canada.

Join in the fun of a Canada 150 "scavenger" hunt. Go solo finding clues, challenge a friend, try it as a group or take part as a family. It's sure to be a lot of fun and takes part entirely in Jubilee Park!

Check off #71 on the ParticipACTION 150 Play List!



PGA on Wheels

10 a.m. to 6 p.m.

It doesn't matter if you're a regular on the course, or if you've never held a golf club in your life! Stop by the PGA on Wheels, meet a local golf pro and test your skills. Organized by the Professional Golfers' Association of Alberta, which represents more than 550 golf professionals in Alberta, this event will include kids golf activities, putting competitions, chipping contests and complimentary lessons!

Check off #18 on the ParticipACTION 150 Play List!



Orbis Bubble Sports Ltd.

10 a.m. to 8 p.m.

Try a crazy game of bubble sports! There will be structured games in the AdventureZone for big kids of all ages and unstructured games in the KidZone for younger kids to "learn the ropes" of bubble sports.

Check off #114 on the ParticipACTION 150 Play List!



ParticipACTION 150 Play List

This summer be sure to participate in the ParticipACTION 150 Play List program to celebrate Canada's heritage!

The Play List includes a range of activities, from soccer and football to jumping rope and cycling, that you can complete right here in Spruce Grove. Sign up for your Play List account and get ready to participate at www.participation.com. Check off a few items at the Canada Day Celebration!



Canada Day Celebration Guide

Watch for the Canada Day Celebration Guide, arriving in mailboxes in mid-June. It will have all the information you need to celebrate Canada's 150th anniversary in Jubilee Park!

Toddler Tent

A new feature for parents and young tots. Check out the Toddler Tent in the KidZone to enjoy toys and games appropriate for younger children who want to join in the fun. Make a craft or play with outdoor toys suitable for wee ones.



Paint It

Celebrate Canada Day by painting a canvas with friends. Paint the official tulip of Canada's 150th anniversary representing gratitude and the long-standing friendship between Canada and the Netherlands. The Dutch designed the red and white flower in celebration of the sesquicentennial. Take home a beautiful reminder of Canada 150.



No previous painting experience is required to attend, but participants must be 16 years of age or older.

For costs, times and registration information visit:
www.letsrelax.ca

Fireworks

11 p.m.

These may not be new, but be prepared for a thrilling end to the evening with our largest fireworks display ever!

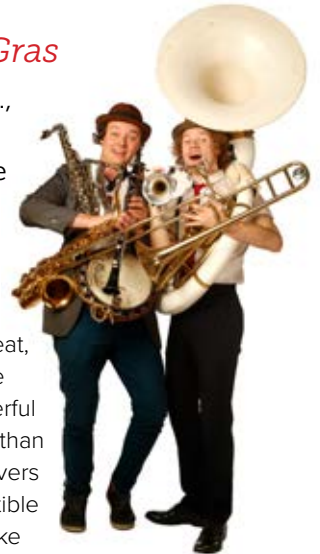


Children's entertainment

Tiny Islands: At the Mardi Gras

10 a.m., 12:30 p.m.,
4:15 p.m. on the
Community Stage

There's no better way to introduce kids to an exciting variety of musical instruments than through the upbeat, can't-sit-still jazz of the 1920s and '30s. Masterful musicians Tim and Nathan Sars engage music lovers of all ages with irresistible tunes by jazz greats like Louis Armstrong, Cab Calloway and Fats Waller. Born into a musical family, veteran leader of Vancouver's inimitable Carnival Band Tim Sars has over a decade of experience entertaining kids and their families with fun, spirited and participatory music. When Tim teams up with his brother Nathan and two more musicians they become the quartet called Tiny Islands. Clap along, sing along, and get up and dance along!



➤➤➤➤ **For a FULL list** of all the great entertainment, as well as the food and product vendors that will be on site, visit www.sprucegrove.org/celebrate.





Mainstage entertainment >>>>

Wrap up your Canada Day festivities by enjoying some fantastic entertainment on the Beaverbrook Mainstage. This year we are kicking the entertainment level up a notch with three fabulous groups that will keep the party going and the energy flowing from 7 to 11 p.m.

Krystle Dos Santos and The Black Mambas

Motown/R & B

7 to 8 p.m.

Krystle Dos Santos and The Black Mambas will start the night off right with their upbeat, eclectic Motown and R & B music. With the majority of the band based in Edmonton, fans will recognize them from performances at Blues on Whyte, The Citadel Theatre and the Edmonton Jazz Festival. Lead singer Dos Santos is an accomplished singer/songwriter and performer with an equally successful solo career.

A graduate of the Canadian College of Performing Arts, she released her debut, award winning album in 2008, and has been honing her craft for nearly a decade since then.

Presented by the Horizon Stagelighters



Captain Tractor

Celtic/Rock/Folk

8 to 9 p.m.

In keeping with the local theme, popular Edmonton-based Celtic/rock/folk/punk-influenced band Captain Tractor will get everyone up and dancing. Formed in 1993, Captain Tractor's current members Chris Wynters, Scott Peters, Jason Kodie, Shannon Johnson, Jon Nordstrom, and Jules Munteer are all active in the city's music and culture scene. With a sound that's similar to Great Big Sea, The Pogues and Spirit of the West, Captain Tractor's original music is rich in local, cultural and geographical reference. They have developed a following for their brand of Canadian rock, with singles such as "Up the Hill", "Frozen Puck to the Head" and "The Bastard of Strathcona County".

Presented by the Horizon Stagelighters



The Trews

Rock Music

9:30 to 11 p.m.

Keeping the energy high and ending the night with a bang will be one of Canada's most successful rock bands of the past decade, The Trews. Comprised of lead vocalist/guitarist Colin MacDonald, lead guitarist John-Angus MacDonald, bassist Jack Syperek and drummer Gavin Maguire, The Trews have 17 Top 10 Rock radio singles (including two #1s) and two Gold-certified albums to their credit. The quartet has received multiple East Coast Music Awards, a CIMA Road Gold Award, an Independent Music Award (US) and numerous JUNO Award nominations. Hit songs include "Not Ready to Go", "Hold Me In Your Arms", "Hope & Ruin", "Highway of Heroes" and "Tired of Waiting". The band recently released



Time Capsule, a collection of their best loved songs from the past 12 years plus four new tracks. The Trews have played over 1,000 shows worldwide on their own as well as supporting the Rolling Stones, KISS, Robert Plant, Guns 'n Roses, Kid Rock and Bruce Springsteen.

Presented by Horizon Stage



WIN A
FAMILY PHOTO SESSION!
Turn to page 26 for details

SPRUCE GROVE PARKS PLAYBOOK



Visit 10 parks,
capture your experiences

and enter
to win!



VISIT ALL
10 PARKS!

Get centred at CENTRAL PARK!

As its name suggests, Central Park is centrally located in Spruce Grove and is a year-round hub for recreation and physical activity. The park is home to various annual events, including the City's popular Christmas in Central Park, and has been a community focal point during tourist events, like the Tour of Alberta in 2015.

Where do I find it: 450 King Street

Features

- Inside the Lions Log Cabin, which is home to the Spruce Grove FCSS Youth Mentorship Program, is a concession that sells snacks, including ice cream and cold drinks. The concession is open Tuesday to Friday (4 to 8 p.m.) and Saturday (1 to 8 p.m.).
- In the southwest corner of Central Park is a community fire pit that is open to the public on a first-come, first-served basis. A small amount of wood is stocked weekly at the fire pit, but you are welcome to bring your own.
- Smack dab in the centre of Central Park, and surrounded by grass, picnic tables and benches, is one of Spruce Grove's splash pads. The splash pad is activated by a hand sensor and is open daily from 9 a.m. to 8 p.m.
- Find the City's Awards of Excellence recognition feature nestled amongst the trees and learn about the outstanding individuals from Spruce Grove who have made significant achievements in their field on a national or international level.
- Located in the northeast corner of Central Park is the skate park. Built to accommodate up to 40 users at a time, the park is open to skateboarders and trick bike riders of all skill levels.

What I enjoyed most about Central Park:



Please note: all City parks are open daily from 6 a.m. to 11 p.m. Park features with specific hours are identified as required.

ENTER TO WIN A FAMILY PHOTO SESSION! See page 26.



Monkey around at HENDERSON PARK!

Located in the northwest corner of Spruce Grove, Henderson Park is perfect for children who like to climb and monkey around.

Where do I find it: 201 Harvest Ridge Drive

Features

- Henderson Park features play equipment designed for children ages five to 12 with swings for ages 18 months to 12 years.
- Kids can hang from the monkey bars or climb the park's five climbing components, which includes a mini rock wall, tree inspired ladders and a leafy vine climber that is similar to a free-standing set of stairs.
- Children can test their balance on Henderson Park's balance beam or take turns pushing the merry-go-round while their friends sit back for a leisurely ride.
- Make your way over to the park's mushroom shaped table and chairs to sit and stay a while. This is a great place to rest while you choose what to explore next, especially if the merry-go-round leaves you feeling dizzy!
- Find a set of bongos in the park, keep the rhythm and make music for all to enjoy.



What I enjoyed most about Henderson Park:

INSTAGRAM AND WIN!

- Post a photo on Instagram of you and your family enjoying one of the parks featured in the Parks Playbook.
- Tag @cityofsprucegrove and use the hashtag #SpruceGroveParksPlaybook.
- You'll be entered to win a Spruce Grove prize pack!



Photos must be posted by Sept. 1, 2017.



Walk the plank at FIELDSTONE PARK!

Located in the north side of Spruce Grove, Fieldstone Park is a quiet neighbourhood park with playground equipment suitable for all ages.

Where do I find it: 18 Linkside Court

Features

- Fieldstone Park features play equipment and swings designed for children ages two months to 12 years.
- With two unique swings to choose from, kids can either lay back, sit cross legged or stand up straight while using a flat, saucer shaped swing. Or, enjoy a tandem swing that parents and children can use together.
- How tall are you? Locate the measuring stick in Fieldstone Park and find out! This activity is appropriate for children who are at least three feet tall.
- Take a look through the orange periscope near the top of the play equipment while a friend takes the wheel below deck and be transported to an imaginative world of pirates, pirate ships and walking the plank!



Fieldstone Park is one of the City's playgrounds that has engineered wood chips around its play equipment. These wood chips provide a durable surface that allows wheelchair access to the play equipment, making it an inclusive, accessible play area for all!

What I enjoyed most about Fieldstone Park:



Get schooled at HERITAGE GROVE PARK!

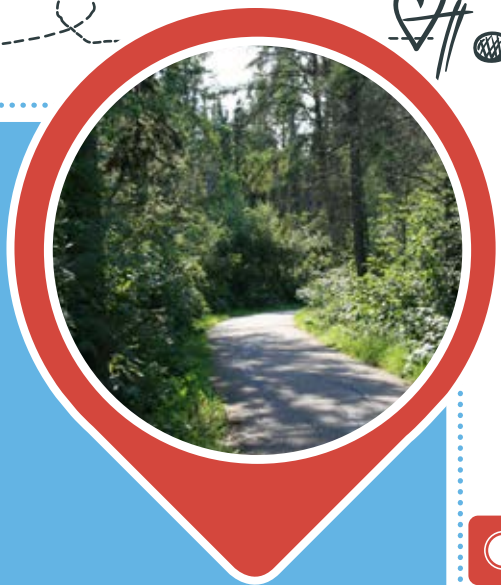
Located in the heart of the community, Heritage Grove Park is a protected natural wonder that spans more than 40 kilometres of all-weather trail and provides excellent City-connectivity.

Where do I find it: Access points are located in many Spruce Grove neighbourhoods

Features

- Heritage Grove Park is the perfect place to get active. The park's sights, sounds and nearby waterways make it the ideal setting for a quiet walk, run, leisurely bike ride or rollerblade. Please be sure to share the path.
- Walking your dog through the extensive trail network in Heritage Grove Park is an excellent way to spend time with your four legged friend and give you both some exercise. The park is an on-leash area and handlers are required to clean up after their dogs.
- Along the trails are a series of outdoor classrooms and educational signs where you can learn about the history and evolution of the forest.
- Listen for the tap-tap-tap sounds of the downy and hairy woodpeckers, who make their home in Heritage Grove Park. These birds search for food in the forest's tree trunks by drilling holes in old trees to find grubs and insects. They use their long, barbed tongue to extract what they can find.
- Keep an eye out for the wood lily, also known as a tiger lily, which grows along the trail in June and July. You are welcome to admire it, but please do not remove it from the trail system.

What I enjoyed most about Heritage Grove Park:



INSTAGRAM AND WIN! See page 17.

VISIT ALL 10 PARKS!

Hoop it up at JUBILEE PARK!

Jubilee Park is a premier outdoor attraction in Spruce Grove and is home to the City's annual Canada Day Celebration.

Where do I find it: 510 Grove Drive

Features

- Jubilee Park creates some of the best passive and spontaneous opportunities for play in Spruce Grove. With wide open green spaces and paved basketball courts, shoot some hoops or enjoy a friendly game of soccer. Your options are limited only by your imagination!
- Play a round of disc-golf using Jubilee Park's nine-hole disc-golf course.
- Plan a family meal using the picnic shelter, barbecues and tables. Charcoal is encouraged, however fire wood may be used. Ensure the fire is out before leaving the picnic area and clean up when you're done.
- Near the playground equipment is a sand box where children can bury and dig up their favourite toys and build sand castles.
- Spray park coming soon! Expected to open in July, Spruce Grove's spray park will be located in Jubilee Park. For more information, turn to page 28.



What I enjoyed most about Jubilee Park:





Learn the ropes at WESTBEND PARK!

Westbend Park is a true hidden gem. Located in the southwest corner of the city, this neighbourhood park offers a wide variety of play equipment for children of all ages to enjoy.

Where do I find it: 25 Westbend Street

Features

- Westbend Park features play equipment and swings designed for children ages 18 months to 12 years.
- Looking for a new way to enjoy this neighbourhood park? Try making the play equipment into an obstacle course! Children are sure to enjoy the challenge of climbing up and down the spider web of ropes, circular jungle gym, spiral tower and rock wall before making their way over to the tire swing.
- Located at ground level, find the playground's ice cream storefront and purchase make believe flavours of your favourite sweet treat. Children can set the fictional prices and play cashier.
- Learn to sign the alphabet in sign language. The play equipment at Westbend Park includes a panel with all the letters of the alphabet and their corresponding sign so children can learn how to sign their name.



What I enjoyed most about Westbend Park:



Release the hounds at CPL. JIM GALLOWAY MEMORIAL OFF LEASH PARK!

Providing plenty of room to roam, the Cpl. Jim Galloway Memorial Off Leash Park is a favourite spot for dog owners and their canine companions in Spruce Grove.

Where do I find it: 51 Century Close

Features

- With 8.6 acres of fenced area and one kilometre of walking trail to explore, the off leash park is a secure space where dog owners can bring their pets to run, exercise and burn off energy.
- Small dogs welcome! The off leash park has a designated area for smaller dogs to play at their own pace and interact with dogs of a similar size.
- The off leash park is kept clean by considerate and co-operative residents who responsibly pick up after their pets, as is required by the City. However, if you've forgotten your doggie bags at home or in the car, bag dispensers are located throughout the park and are re-stocked by City crews.



What I enjoyed most about Cpl. Jim Galloway Off-Leash Park:

Formerly referred to as Century Off Leash Park, the Cpl. Jim Galloway Memorial Off Leash Park was re-named on Sept. 7, 2013, to honour the memory of Cpl. Jim Galloway for his supreme sacrifice in the line of duty in Spruce Grove. After an extensive career working for Police Dog Service, Cpl. Galloway was transferred to the "K" Division (Alberta) where he was posted as a dog handler for 26 years. Cpl. Galloway died in the line of duty on Feb. 28, 2004, when he was fatally shot while working with the Edmonton RCMP Emergency Response Team during an armed stand-off in Spruce Grove.



Get geared up at MCLEOD AVENUE PARK!

Located in the southeast corner of Spruce Grove, McLeod Avenue Park was upgraded in 2012 and is now a treasured neighbourhood amenity for nearby residents.

Where do I find it: 608A McLeod Avenue

Features

- McLeod Avenue Park features play equipment designed for children ages five to 12 and swings for children 18 months to 12 years.
- Jump up and hang on tight to the tall, circular climber at McLeod Avenue Park. To an imaginative mind, this spinning piece of equipment could resemble a UFO and make for an exciting game of space ships and aliens.
- Set inside the park's play equipment is a panel of five colourful gears. Use the thumb hole to make their interlocking teeth spin and let the young minds in your family wonder at the mechanics of gears.
- Combine upper body and lower body strength, balancing skills and hand-eye coordination while playing on the ropes at McLeod Avenue Park. Make your way up and over the top rope and down into the inner circle.
- Located at ground level is a shape dial that younger children can use to identify seven common shapes including a tree, heart and star. For a more difficult exercise, children can enjoy a mini scavenger hunt by finding each shape located elsewhere on the playground equipment.

What I enjoyed most about McLeod Avenue Park:



INSTAGRAM AND WIN! See page 17.

VISIT ALL 10 PARKS!

Shape up at ROTARY PLAYSCAPE!

Rotary Playscape is undoubtedly Spruce Grove's brightest, most colourful park.

Where do I find it: 9 Tri Leisure Way

Features

- Created in partnership with the Spruce Grove Rotary Club, Rotary Playscape offers more than 10,000 square feet of play space and was the largest of its kind in Canada when it officially opened in 2009.
- Mini musicians will enjoy the park's music centre, which features a number of drums, bells and chimes.
- If the floor of the playground feels spongy on your bare feet, it's because egg cartons were used beneath it to create a cushioned floor effect.
- Rotary Playscape was designed with the environment in mind. The entire base of the playground was covered in rubberized material constructed from recycled trees. The play equipment in Rotary Playscape has a 30 per cent reduced carbon footprint when compared to other traditional structures of the same style.
- Come prepared to cool off. Be greeted by the Penn-West Energy splash pad, which is located at the entrance to Rotary Playscape. The splash pad is activated by a hand sensor and is open Monday to Friday from 8 a.m. to 5 p.m.
- Rotary Playscape promotes physical activity and fitness for all ages. With more than 13 cardio steppers throughout the park, adults can fit in a workout while visiting Rotary Playscape with their family.



What I enjoyed most about Rotary Playscape:





Be amazing at NATURESCAPE!

Designed with a nature theme in mind, the Naturescape playground creates a unique and exciting setting for play in Spruce Grove.

Where do I find it: 600 Main Street

Features

- The Timber Mountain log slide in the Naturescape playground may be the most interesting slide in all of Spruce Grove. Travelling down a steep hill, the slide runs along the ground and is approximately 15 feet long.
- The rope and climbing rocks in the Naturescape playground is a park highlight that mixes elements of nature with man-made materials. Children can climb up the rope and then down the side of the rock.
- Follow along through the twists and turns in one of the park's rock structures, which forms a dry river rock run, then make your way through a mini maze made of wooden panels.



From 1987 to 2009, a Japanese school and exchange program operated in the log cabin that is located beside the Naturescape playground. During this time, hundreds of students travelled to Kokusai Kaiyou School, the Japanese school in Spruce Grove, where they lived with local families on weekends and became immersed in Canadian culture for roughly three months at a time. A Spruce Grove resident managed the school alongside the attending Japanese teacher and an English teacher.

What I enjoyed most about Naturescape:





FAMILY PHOTO SESSION ENTRY FORM

We hope you enjoyed using the Spruce Grove Parks Playbook to get out and explore some of the many parks that are located throughout the community. Did you visit a park you had never been to before? Did you learn something new about these outdoor spaces? We sure hope so!

Enter to win a family photo session!

To enter:

1. Answer the five questions listed below about some of the parks featured in the Parks Playbook.
2. Complete and clip this entry form.
3. Bring it to the Recreation Services office on the second floor of the Border Paving Athletic Centre, located at 9 Tri Leisure Way, by Sept. 1, 2017. For hours of operation visit www.sprucegrove.org/BPAC.

One lucky winner will receive a family photo session, including 20 high resolution digital images. And may we suggest a local park as the perfect backdrop for your photo shoot?

Central Park

How many benches are located in Central Park? _____

Henderson Park

How many tree stumps are part of the play equipment at Henderson Park? _____

Jubilee Park

Name at least one of the forest creatures that are carved into the play equipment. _____

Cpl. Jim Galloway Memorial Off Leash Park

Name one of Cpl. Galloway's canine partners. _____

(Hint: Read the memorial board dedicated to Cpl. Jim Galloway at the off leash park.)

McLeod Avenue Park

Of the seven shapes included on the blue panel in McLeod Avenue Park, what shape does the arrow point towards when it is pointing north? _____

Name: _____

Phone number: _____

Address: _____

Email: _____

The winner must accept the prize as offered and the prize must be redeemed by Dec. 1, 2017. There will be no substitutions. The winner also releases the City of Spruce Grove and its contest partners from any liability for any loss, harm, damage, cost or expense arising out of the participation in the contest or participation in the contest-related activities. For complete contest rules, visit www.sprucegrove.org/parksplaybookrules.

Privacy/Use of Personal Information

This information is being collected under the authority of section 33(c) the Freedom of Information and Protection of Privacy (FOIP) Act. It will be used to administer the 2017 Spruce Grove Parks Playbook contest. The personal information provided will be protected in accordance with Part 2 of the Act. If you have any questions regarding the collection, use and disclosure of personal information, please contact the FOIP Coordinator at 780-962-7634 ext. 154.





Don't be a noisy neighbour

With longer daylight hours during the summer months, it's normal to spend more time working and playing outside, but be cognizant of how much noise you are making. If you are having people over and spending time outdoors, try and keep the noise to a reasonable level.

The City's noise bylaw permits the use of domestic equipment, which includes items like lawn mowers, weed trimmers and garden tillers, between 7 a.m. and 10 p.m. daily.

If you need to file a noise complaint, call Enforcement Services at 780-962-7585.

www.sprucegrove.org/bylaws

SAVE \$1,675!



SEE PAGE 37

Join our team!

If you're looking for a welcoming and rewarding place to work, consider joining the City of Spruce Grove! We are truly the "employer of choice," offering excellent benefits and a friendly, family-oriented culture.

Some of the many perks of working with us include:

- A comprehensive health benefit plan
- Defined benefit pension plans
- A safe working environment
- Employer-supported employee wellness and social activities
- Prime parking
- Training and development
- Casual Fridays

We value our employees and demonstrate this daily in how we do business.

For current employment opportunities, visit www.sprucegrove.org/jobs. Applications are only accepted online.

Join us and see why we're the organization of choice!

www.sprucegrove.org/jobs

Opening soon!

New spray park to open in July

Residents of Spruce Grove can officially start the countdown to the opening of Spruce Grove's highly anticipated new spray park located in Jubilee Park.

Expected to open to the public on July 1 during the City's Canada Day Celebration, the spray park will be open daily during the summer months from 10 a.m. to 8 p.m. and will have on-site staff to assist with day-to-day operations, programming, cleaning and sanitation.



"The new spray park greatly supports the City's goal of providing residents with spontaneous recreational opportunities in Spruce Grove," says Paul Feser, Supervisor of Recreation Services with the City. "It's going to be a fantastic amenity for our community and a really fun way to spend a hot summer day."



Artist renderings

Fun features

The spray park will feature more than 50 interactive components:

- **SuperWave:** Stands more than 20 feet tall and is able to dump 70 gallons of water at once creating a splash zone of more than 1,200 square feet.
- **Tricky Bells:** Buckets spin 11 feet in the air while children choose which ones to fill with water.
- **Sea Silhouette Pelican:** A spiraling water effect shoots up to 10 gallons of water per minute and encourages creative play.
- **Sea Silhouette Octopus:** Rotating tentacles, cannon jets, a jet stream and misty jets produce a spray zone stretching roughly 506 square feet.
- **Bamboo Cannons:** While spinning 360 degrees, jets of water spray more than 23 feet in all directions.
- **Cascades:** A trickling stream and water dams engage younger children in collaborative play.
- **Side Winder:** A family-friendly ground spray encourages users to run their hands and legs through multiple gentle streams.



Review the rules

- The spray park will operate on a first-come, first-served basis.
- Children ages 8 and under must be accompanied by someone 14 years of age or older.
- Proper swimwear is required.
- Before getting in the water, users are required to use the outdoor shower facilities.
- Children who are not toilet-trained are required to wear swim diapers.
- Users are welcome to enjoy food and non-alcoholic drinks (in non-breakable containers) in the spray park, but they are not permitted on the spray deck. Alcoholic beverages are prohibited.
- With the exception of certified service animals, pets are not permitted in the spray park.



For a complete list of spray park rules, visit www.sprucegrove.org/spraypark.

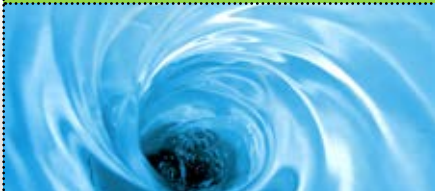
Amenities for all

When designing the spray park, special attention was given to include a range of amenities that would appeal to people of all ages. This includes:

- A toddler zone for younger users (ages 5 and under).
- Two family zones with opportunities for passive play and active play (ages 5 and up).
- A pavilion featuring change rooms, outdoor showers, wet and dry bathrooms, and a staff kiosk.
- A plaza space that will provide seating, tables and a dry area.

Stay and play

- Enjoy the spray park like a pro! Pack a picnic, plenty of sunblock, and plan to spend the entire day in the water and connecting with nature.
- Walk, ride a bicycle or rollerblade through the City's extensive trail network to get to Jubilee Park. But, once you arrive, please keep all bicycles, scooters, rollerblades, skateboards and strollers off of the spray deck. Limited parking is available.
- BYOS: Bring Your Own Shade. Consider packing a pop-up tent or sun/wind shelter to use for the day, especially if you are bringing infants and toddlers to the spray park.



Did you know the new spray park will use 100 per cent recycled water? Filtering roughly 20,000 gallons of water every hour, the spray park's re-circulating water system will make the park both water and energy efficient.

www.sprucegrove.org/spraypark

Spruce Grove Trim Your Trash

Download the mobile app!

Do you have questions about how to sort your waste?

Not sure what goes where?

The answers are now available at your fingertips thanks to the City's new Spruce Grove Trim Your Trash mobile app!

It's easy and FREE for any iOS and Android device:

- Download the app through the App Store or Google Play (search Spruce Grove Trim Your Trash)
- Search for a specific waste item
- Find out if it belongs in your green organics cart, blue recycling bag, black waste cart, at the Eco Centre or the bottle depot

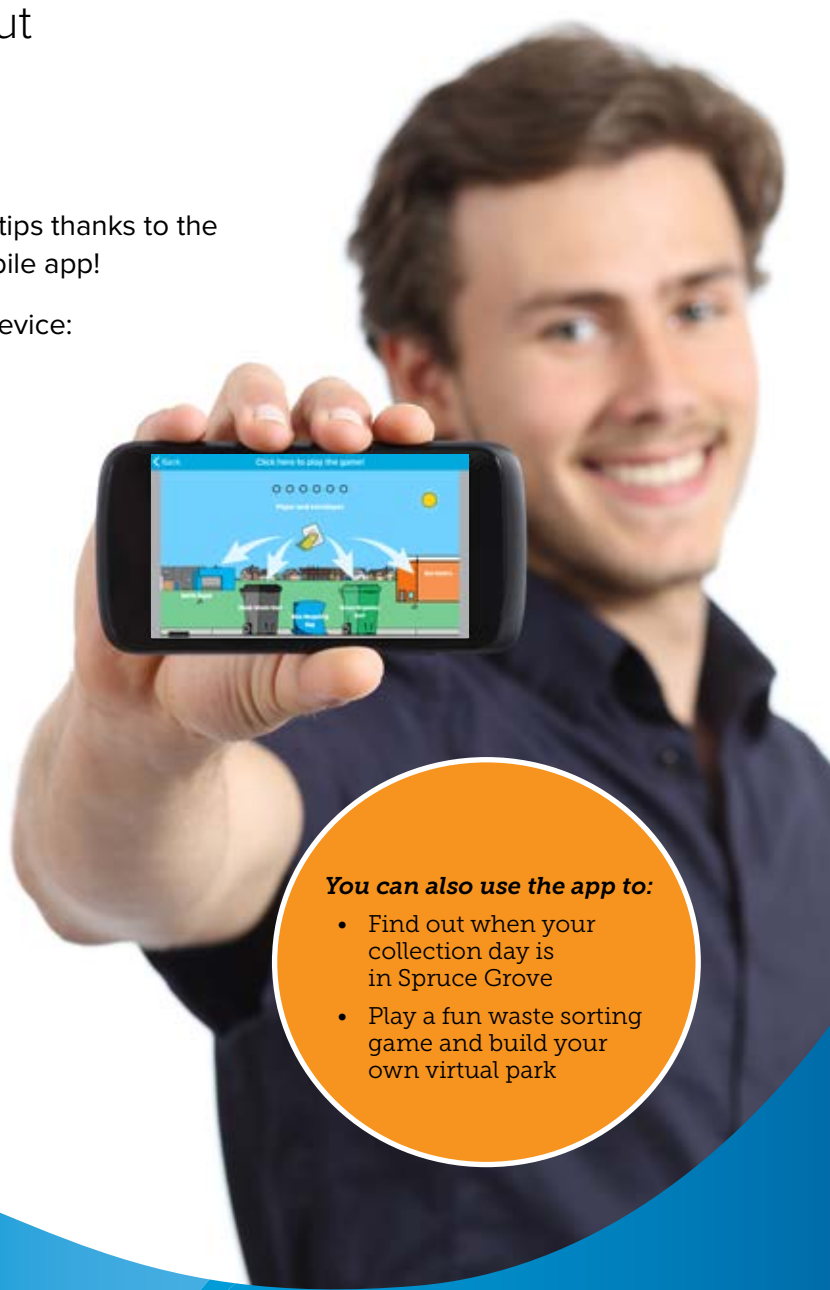
Download the app today and get ready to reduce your wasteline!



APPLE



ANDROID



You can also use the app to:

- Find out when your collection day is in Spruce Grove
- Play a fun waste sorting game and build your own virtual park

www.sprucegrove.org/trimyourtrash

WASTE COLLECTION



Not sure what goes where?

Search for an item on Trim Your Trash, the City's online waste collection guide.

NEW! Download the Trim Your Trash mobile app for free. Available for any iOS and Android device.

Both the guide and the app are available at www.sprucegrove.org/trimyourtrash.



When is my collection day?

Monday*: Acreages in city, Fieldstone, Greenbury, Hilldowns, Kenton, Linkside, Prescott, Spruce Village, Stoneshire, Tonewood

Tuesday: Grove Meadows, Lakewood, Woodside

Wednesday: Brookwood, Broxton Park, Woodhaven

Thursday: Aspenglen, City Centre, Creekside, Jesperdale, Legacy Park, McLaughlin, Millgrove, Mobile City Estates, Westgrove

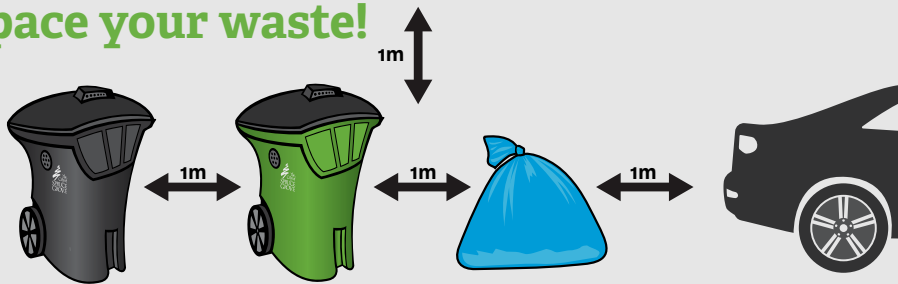
Friday*: Deer Park, Harvest Ridge, Hawthorne, Heatherglen, Spruce Ridge, Sprucewood Villas

*Statutory holiday collection dates:

If your regular waste collection day falls on a statutory holiday, please put your cart(s) and blue bags out on the date indicated below.

Holiday	Date	Collection moves to
Heritage Day	Monday, Aug 7	Tuesday, Aug 8
Labour Day	Monday, Sept 4	Tuesday, Sept 5
Thanksgiving	Monday, Oct 9	Tuesday, Oct 10
Christmas Day	Monday, Dec 25	Saturday, Dec 23 *accelerated
New Years Day (2018)	Monday, Jan 1	Saturday, Dec 30 *accelerated

Space your waste!



Cart lids must be completely closed for pick up and out by 7 a.m. on your collection day.

Eco Centre

The Eco Centre is located at 50 Diamond Ave.

Hours: Tuesday-Saturday: 10 a.m. – 6 p.m.
Sunday and Monday: Closed
Statutory holidays: Closed

www.sprucegrove.org/ecocentre

Save the date!

e-roundup: June 6-24
www.sprucegrove.org/eroundup

Free-cycle: June 10-11
www.sprucegrove.org/freecycle

Large item pickup: June 12-16
www.sprucegrove.org/largeitem

Shred-4-Free: June 17
www.sprucegrove.org/shred

More information

Report a broken or damaged cart or missed collection:

780-962-7584

General waste reduction inquiries:
780-962-7634 ext. 194

Visit www.sprucegrove.org/waste

BLUE BAGS Recyclables



Weekly collection (year-round)

Includes:

- Aluminum cans
- Cardboard
- Magazines
- Newspapers
- Office paper
- Toilet paper rolls
- Telephone books
- Hard plastic bottles/containers

GREEN CART Organics



Weekly collection: April 10–Nov. 17, 2017

Monthly collection: December to March in the second full week of the month

Includes:

- Food waste
- Yard waste
- Soiled paper and cardboard

BLACK CART Garbage



Weekly collection (year-round)

Includes:

- Aluminum foil
- Bubble wrap
- Broken glass
- Cleaning/baby wipes
- Disposable diapers
- Plastic wrap
- Styrofoam
- Food bags (one-time use plastic)



Home improvement

Does your summer to-do list involve sprucing up your backyard with a new deck or building a shed to store your seasonal tools?

To you it may be a simple home improvement project, but in the City's eyes, these structures are all "accessory buildings" and that means you more than likely need a permit or two before you get started.

Building permits focus on the structural stability of a building and safety of its occupants, while development permits deal with the development's impact on surrounding properties. Both types of permits help

ensure work is completed in accordance with the City's Land Use Bylaw and Alberta's Safety Codes Act.

All permit applications must be completed and submitted to the City's Planning and Development department for review and approval. Applications are generally processed within two to four weeks, depending on the complexity of the project, plus a 21-day appeal period, so keep that in mind when planning your project.

Getting started >>>

Once you've decided on a project, you can find permit application forms at www.sprucegrove.org/permits or at the Planning and Development office. Several checklists and brochures are also available to help you make sure you are including all the necessary documents and fees with your application.

If you have questions, you can also stop by the office for assistance. Bring your ideas, drawings or plans and a development officer can help you in determining what applications you need to complete.



Decks

Decks that are not higher than 0.6 metres (two feet) off the ground do not require a permit. Decks higher than that require both a development permit and a building permit prior to construction. Decks must also be no closer than one metre (3.3 feet) to rear and side property lines, including decks that do not require permits. There are exceptions to these rules (e.g. zero lot line development). If you are covering an existing deck, a development and building permit are both required. When covering an existing deck there will be different setback requirements and these should be discussed with a development officer.



Sheds, pergolas and gazebos

Sheds, pergolas and gazebos that are less than 10 square metres (approximately 107.6 square feet) do not require a permit. Sheds, pergolas or gazebos larger than that require both a development permit and a building permit prior to construction. They must also be located a minimum of two metres (6.6 feet) from the residence and no closer than one metre (3.3 feet) to the rear and side property lines. There are exceptions to these rules (e.g. zero lot line development).



Retaining walls

A development permit is required for all retaining walls. Any retaining wall that is greater than one metre (3.3 feet) in height also requires a building permit, which must be accompanied by drawings that have been approved by a professional structural engineer.



Swimming pools and hot tubs

Swimming pools and hot tubs both require building permits prior to installation. Contact the Planning and Development department to determine if a development permit will also be required.

Garages

Both a development permit and a building permit are required prior to construction and must meet the required regulations in the Land Use Bylaw.



Planning and Development

Office location:

414 King St.

Monday to Friday:

8:30 a.m. to 4:30 p.m.

Mailing address:

315 Jespersen Ave.

Spruce Grove, Alta. T7X 3E8

Phone: 780-962-7582

Reducing the risk

Your role in preventing and responding to trail fires

The name Spruce Grove says it all: we are a city surrounded and connected by trees, trails and natural areas.

It's easy to enjoy our urban forest and other expansive outdoor spaces, but do you know how to protect them from the risk of fire?

"We absolutely want residents to enjoy all the natural areas Spruce Grove has to offer," says Spruce Grove Fire Chief Robert Kosterman. "By keeping fire prevention top of mind and being prepared to respond appropriately in the event of an emergency, we can all help keep our community – and our greenspace – safe."

The summer months typically mean more activity in these areas, which, when combined with the potential for hot, dry weather, can increase the risk of grass or forest fires.

Kosterman suggests brushing up on forest fire safety so you know how to prevent a fire from starting and exactly what to do if you encounter one.

"Fires that start in our natural areas are often caused by humans and are 100 per cent avoidable," he said. "By taking the necessary precautions, residents can play an important role in reducing the risk of fires in our trail systems, community parks and even their own backyards."

And as for what to do if you spot suspicious smoke or flames – "Don't hesitate. Call 911 immediately."



Fire pit permits

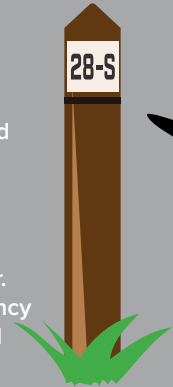
In Spruce Grove, residential fire pits and outdoor fireplaces require a free permit. After you install your fire pit according to the City's guidelines, you need to submit a request for a permit.

For Spruce Grove fire pit guidelines and to submit a free permit application, visit www.sprucegrove.org/firepit.

the risk

Mark your spot

Located along the path in Heritage Grove Park are numbered trail markers that are easily visible and correspond to your location. In case of an emergency, like a fire, call 911 and tell the operator the number of the nearest trail marker. This information will help emergency crews find your exact location and speed up their response time.



Keep back

Once you've reported the smoke or fire to 911, keep back and do not interfere with the fire or firefighters on site. Fire Services personnel are trained in fire suppression techniques and are prepared to respond to fires in the trails and other natural areas using specialized vehicles for park systems. Instead, leave the area and give emergency crews room to work.

I see smoke or flames in the trails! What do I do?

- Call 911 immediately and report the smoke or fire.
- Give your location using the trail markers and closest street.
- Leave the area and go to the nearest road access to meet the arriving fire crews.
- On your way out, advise other trail users to leave the area. Stay at the entrance point to prevent others from entering the trail system.
- Make a note of suspicious activity you see in the immediate area and provide this information to Fire Services once the fire has been put out.



Do your part!

Whether you are in your own backyard, a local park or the trail system, we all have a part to play in fire prevention.

- *Do not smoke while using the trails, community parks or other natural areas.*
- *If you're smoking on your own property, dispose of all materials properly.*
- *When using a backyard fire pit or outdoor fireplace, consider the weather conditions. High wind speeds may send smoke or sparks long distances, creating a fire hazard. Also, make sure to have water close by.*
- *Never leave a backyard fire pit or outdoor fireplace unattended and ensure the flame is completely out when you're done.*
- *Follow any temporary restrictions or fire bans issued by the City to help ensure community safety.*

Every drop counts

Save water and the strain on your wallet



1. Don't cut your grass too short – longer grass helps shade the soil and reduces the need for watering.

2. Create a water wise landscape by using native grasses, such as fine fescues or rye grass, and drought-tolerant shrubs that require far less water. Additionally, use mulch to reduce weed growth, which competes for water and nutrients.

3. The best time to water your lawn is either early in the morning or late in the evening. If you water during the coolest parts of the day, you won't lose as much to evaporation.

4. Clean your vehicle at a local car wash bay rather than in your driveway to conserve water and prevent chemical runoff from entering the City's stormwater sewer system. Water from a car wash is recycled and then enters into the sanitary sewer system where it is treated before being released into the environment.

5. Your lawn only needs 2.5 centimetres of water each week to grow. Not sure how to measure that? Put an empty flying disc out on your lawn while you're watering it. When the disc is full, you're done. Most sprinklers can achieve this in about one hour.

6. Use a rain barrel to collect rain water for free! Water collected in a rain barrel can be used on your lawn, plants and shrubs.

www.sprucegrove.org/tap

With summer knocking on our doorstep, it's only natural to bring your garden hose and sprinkler out of storage and begin fixing up your yard. You want to maintain a healthy lawn and maximize your curb appeal, and who could blame you?

But, at the same time, the water you use is measured, calculated and costs money – and every drop really does count. In Spruce Grove, increased water use is closely tied

to hot weather and outdoor watering, which means most residents spend more money on water during the summer months than they do in the winter.

To help save water and the strain on your wallet, there are plenty of practical, simple changes you can make in your day-to-day routine that will go a long way to conserving water and keeping bucks in the bank.

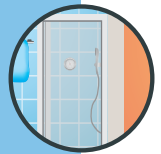
SAVE \$1,675!

Potential annual savings (for a family of four):



Save \$527

Skipping the bath and taking a shower could save over 100,000 litres of water each year.



Save \$109

Invest in a high efficiency washing machine and save up to 20,732 litres of water per year.

Save \$545

Use a low flow kitchen faucet and reduce your water usage by up to 103,551 litres of water per year.



Save \$137

Turning off the tap when brushing your teeth or shaving could save up to 26,000 litres of water from going down the drain each year.

Save \$357

Installing a low flush toilet could save up to 67,747 litres of water per year.



Road work ahead!

The summer months are prime construction season and that means road work ahead in several areas of Spruce Grove. When driving through construction zones, drivers are reminded to slow down, obey all posted speed limits, and watch for portable traffic signs or flag people who may be in place to manage traffic flow. And please give crews room to work so everyone can get home safely at the end of the day.



Grove Drive West extension

Grove Drive will be extended west from Harvest Ridge Drive by approximately 500 metres to provide access to the new K-9 school being constructed in the area. In addition, the existing western intersection of Grove Drive and Harvest Ridge Drive will be converted to a roundabout and a second roundabout will be constructed further west on Grove Drive as part of the new road near the school.

Impact: During the roundabout construction at Grove Drive and Harvest Ridge Drive, the intersection will be closed to traffic. Residents will need to use the eastern exit on Harvest Ridge Drive as a detour.

Anticipated start date: Mid-May

Anticipated completion date: End of August

Regular maintenance

In addition to the large road construction projects, City crews also conduct regular maintenance and repairs on streets and sidewalks throughout the community, including:

- Crack sealing
- Street sweeping
- Line painting
- Pothole repairs
- Asphalt repairs
- Concrete repairs and maintenance
- Traffic light repairs and maintenance
- Drainage maintenance

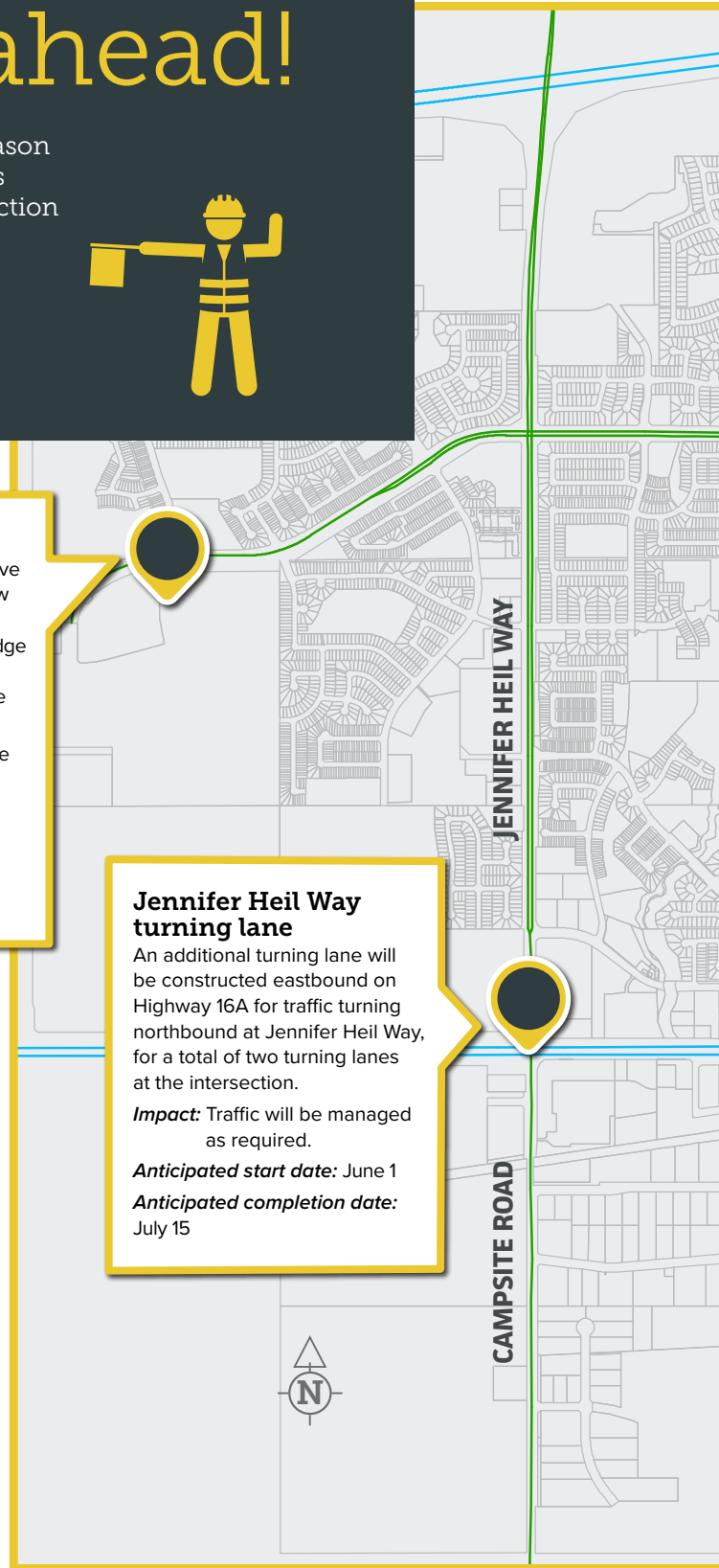
Jennifer Heil Way turning lane

An additional turning lane will be constructed eastbound on Highway 16A for traffic turning northbound at Jennifer Heil Way, for a total of two turning lanes at the intersection.

Impact: Traffic will be managed as required.

Anticipated start date: June 1

Anticipated completion date: July 15



HIGHWAY 16

HIGHWAY 16

New signal alert!

New traffic signals will be installed at the intersection of Westwind Drive and Century Road.



GROVE DRIVE

Pioneer Road extension

Pioneer Road will be extended from Grove Drive to Highway 16A. Traffic signals will also be installed at the intersection of Grove Drive and Highway 16A.

Impact: There is no anticipated impact to residents or traffic during this construction work.

Anticipated start date: May

Anticipated completion date: End of November



CENTURY ROAD

PIONEER ROAD

Watermain replacement

A watermain replacement project will occur along Oatway Street, Gosset Place, Bristow Crescent and Collingwood Avenue.

Impact: Households that will be impacted by this work will receive advance notice. At some point in the project, each home will be connected to an alternate water feed. During construction, street access and parking in the area will be limited.

Anticipated start date: Mid-May

Anticipated completion date: Mid-October



HIGHWAY 16A

GOLDEN SPIKE ROAD



Road resurfacing projects

Anticipated start date: June 1

Anticipated completion date: Mid-October



• **Golden Spike Road**

Golden Spike Road will be resurfaced on both north and southbound lanes from Diamond Avenue to the south City limit.

• **Brookwood neighbourhood**

Several streets in the Brookwood neighbourhood will be resurfaced, specifically: Belleville Avenue, Berkley Street (to Collingwood Avenue), Benton Street, Beverley Avenue, Brookwood Crescent, Brookwood Place and Blairmore Place.

• **Grove Drive**

Grove Drive eastbound between Calahoo Road and Fieldstone Drive will be resurfaced.

City facility rentals

The City of Spruce Grove provides facilities to rent for events such as wedding receptions, anniversary celebrations, birthdays, programs, meetings and sporting events. For more information call 780-962-7579, email recreation@sprucegrove.org or visit www.sprucegrove.org/facilityrentals.

Spruce Grove Arena

9 Agrena Rd.
Dry-pad rentals: April–August
Ice rentals: August–April

Agra Room

(2nd floor, Stu Barnes Arena, Spruce Grove Agrena)
Capacity: 80
Available year-round

Ball diamonds and sports fields

Available May 1–Oct. 15, annually

Border Paving Athletic Centre

9 Tri Leisure Way
Meeting rooms available year-round
www.sprucegrove.org/bpac

Community parks

A rental is not required, as community parks are available for public use 6 a.m.–11 p.m., daily
www.sprucegrove.org/parkguidelines

Electronic Billboard

Calahoo Road and Highway 16A
Community group advertising
Available year-round
www.sprucegrove.org/advertising

Elks Hall

400 Diamond Ave.
Capacity: 325
Available year-round
Kitchen also available

Fuhr Sports Park

9 Tri Leisure Way
Two turf fields
Available April–November

Horizon Stage

1001 Calahoo Rd.
Capacity: 300
Available September–June
Call 780-962-7631 for booking information.
www.horizonstage.com

Spruce Grove Curling Club

9 Agrena Rd.
Call the Spruce Grove Curling Club
at 780-962-3222 for booking information.



Acting I (ages 6–7)

Dates: July 17–21 Time: 9–11 a.m. Cost: \$100

Jam-packed with a variety of games and basic drama exercises suitable for younger children. Kids will be encouraged to play, pretend and let their sillies out.

Acting II (ages 8–9)

Dates: July 17–21 Time: 12–3 p.m. Cost: \$130

This camp will use a variety of drama games and techniques to encourage kids to explore and expand their acting skills. Students will work on a short showcase piece that they will present on the last day of camp.

Acting III (ages 10–13)

Dates: Aug. 21–25 Time: 9 a.m.–3 p.m. Cost: \$200

A more intense, full-day camp that will use drama games, improvisation techniques, character and scene work to help students delve deeper into their acting abilities. Participants will work together to create a showcase piece that they will present on the last day of camp.

Directors Cut Camps

Film Reel Commercial Workshop (ages 10–14)

Dates: July 24–28 Time: 9 a.m.–4 p.m. Cost: \$280

Use HD cameras and the latest digital equipment and hardware to film and edit your next big blockbuster. Participants will storyboard, write a script, and learn about camera angles and cinematography before filming and editing their movies. They will also learn how to market their films by creating a movie poster.

Lego/Clay Animation Workshop (ages 7–10)

Dates: Aug. 14–18 Time: 9 a.m.–4 p.m. Cost: \$280

Work with a real filmmaker to create a stop-motion clay or Lego film that is sure to rival the works of Hollywood's most talented. Participants will work in small crews to storyboard, script, build, design, capture and add sound effects, titles, voices and music to their own action packed, comedic or dramatic animated short.

Location

All camps will be held at the Border Paving Athletic Centre, located at 9 Tri Leisure Way.

For information or to register:

- Visit horizonstage.com
- Call 780-962-8995

2016 Year in review



VISION STATEMENT

OUR VISION

As outlined in Building an Exceptional City, the City's 2015–2035 Strategic Plan, the vision for the future of Spruce Grove is that it is the best place to live, to raise an active, healthy family and to grow a strong, successful business.



Where people choose to live:

A dynamic city with an exceptional quality of life

Through high quality municipal services, Spruce Grove is a safe, dynamic urban centre with an exceptional quality of life and is a welcoming regional gathering place



Where people choose to raise a family:

A leading leisure, recreation and sports community

Spruce Grove provides exceptional, diverse and high quality leisure, recreation and sports opportunities, complemented with a respected arts and culture environment



Where people choose to grow a business:

A strong, diversified regional business

Through innovative and supportive business development, Spruce Grove is a prosperous, self-sustaining regional economic home to competitive, successful commercial and industrial companies

OUR MISSION

Our mission is to build an exceptional city through innovation, leadership and committed public service.

OUR CORE VALUES

These values guide our commitment to moving forward as an organization to realize our vision for the future of Spruce Grove:

- Leadership
- Openness and responsiveness
- Service excellence
- Accountability
- Honesty and integrity

OUR UNDERLYING PRINCIPLES

- Sustainability through sound economic development
- Leadership in affordable quality service delivery
- Affordability through prudent fiscal management
- Leadership in collaboration to ensure best value for all
- Building a complete community for all

TABLE OF CONTENTS

A look inside

Mayor's message	44
City Manager's message.....	45
City profile.....	46
2016 snapshot	48

Where people choose to live

Meet the Camilleri family	50
Resident satisfaction survey results.....	51
Hot chocolate with a cop.....	52
Recreation + resources.....	52
Round we go	54
System enhancement.....	55
Time to expand.....	56
Digging deep	57

Where people choose to raise a family

Meet the Romphf family	58
Cultivating culture.....	60
Social sustainability	61
2016 census findings	62
Up we grow!.....	63
Trash talk.....	64

Where people choose to grow a business

Perks Coffee House	66
Growing up.....	68
Looking ahead.....	69
Top marks.....	70
Booming business	72
2016 Financial Summary.....	73

MAYOR'S MESSAGE

Stuart Houston



Spruce Grove is a city that I am not only proud to represent as your mayor, but I am also very proud to call home. And I know that my colleagues on Spruce Grove City Council feel very much the same way. It's why our 20-year strategic plan for the community focuses on how we can build an exceptional city. It's our vision for the future of Spruce Grove, which is that we are the best place to live, to raise an active healthy family and to grow a strong, successful business.

In our annual Year in Review, you'll be able to see some of our many accomplishments from last year that are moving us closer to achieving this vision for Spruce Grove. But you don't have to just take my word for it. We'll also be introducing you to three local families and sharing their stories about why they have decided to live and work in Spruce Grove.

First, we have our newcomers to Spruce Grove – the Camilleri family. They recently moved here from a smaller northern Alberta town and have quickly settled in to the rhythm of life in our city. With two school-aged children and a toddler, they are enjoying the range of what Spruce Grove has to offer. They truly believe Spruce Grove is the best place to live.

Then we have our new parents, Matt and Kate Romphf. These two have lived in Spruce Grove for most of their

lives and when they decided to start a family, there was no doubt in their minds about where they would raise their children. With a busy toddler and a new baby on the way later this year, they firmly believe Spruce Grove is the best place to raise a family.

Local business owner Ken Turlock, who is one half of the duo behind Perks Coffee House, thinks Spruce Grove was a perfect spot to open up shop. Through hard work and with the support of the community, he has been able to expand his business, while also supporting a variety of local events and causes. He knows Spruce Grove is the best place to grow a business.

These three stories show that we are doing what we set out to achieve with the City's strategic plan. We also know there are many more stories like this in our city and we are very proud of all of them, for they are truly our motivation to continue moving forward.

There's no question that building an exceptional city is a lofty goal, but we are already seeing results as we work towards our long-term vision for Spruce Grove and I am confident we will continue to move forward with purpose, intention and commitment in creating a community we are all proud to call home.



CITY MANAGER'S MESSAGE

Robert Cotterill

On behalf of the City of Spruce Grove, I am pleased to present our 2016 Year in Review, which highlights many of the City's accomplishments and our financial position from last year.

As a municipality, we align all our projects, initiatives and even our day-to-day operations with the vision that is outlined in our strategic plan, Building an Exceptional City, which is that Spruce Grove is the best place to live, to raise an active, healthy family and to grow a strong, successful business. This strategic plan is intended to guide and inform the City's future for a 20-year planning horizon, but it's also used on an annual basis so we can move forward with purpose and intention. Spruce Grove City Council developed and approved this plan only a few years ago, and already we are seeing the benefits of this approach.

Despite the challenges that have come with the current economic situation, we are experiencing growth and continue to provide residents with quality service levels. We are managing our resources in a way that has allowed us to open new facilities like the Border Paving Athletic Centre (see page 52), make enhancements to our transit service (see page 55) and work on revitalizing our city centre (see page 68), without putting unreasonable pressure on our ratepayers.

This success comes from the collaborative and respectful working relationship that exists between council members and City Administration. Council sets the big picture vision, which Administration uses to create the annual corporate plan, which is our guiding document for governance, community development and service delivery. In a sense, it's our "how to" manual for taking council's vision for Spruce Grove and applying it to everything we do, from major construction projects, like building a new water reservoir (see page 57) or our first modern roundabout (see page 54) to the daily tasks of operating a city, such as street sweeping and waste collection.

I am both continually impressed and very proud of the work that has been done to implement council's vision for Spruce Grove. A selection of these accomplishments is highlighted in this Year in Review and I would encourage you to take a look at what we achieved in 2016.

And while it's important to recognize our successes, I'm also looking ahead to what we have planned for 2017 and I'm excited about what's on the horizon. With the leadership and support from council and the dedication and expertise of our staff, I am very confident that we will achieve great strides on our journey to make Spruce Grove a vibrant, innovative and exceptional city.

CITY PROFILE

The City of Spruce Grove is a vibrant, dynamic community of more than 34,000 people. Located just 11 kilometres west of Edmonton, the City offers housing options for everyone, excellent schools, sports, culture, and recreation facilities and a mix of businesses ranging from national retailers, locally owned shops, restaurants and professional services.



The City's plans, services and ongoing operations are carried out by a workforce of more than 300 employees who are overseen by three general managers and a Chief Administrative Officer who reports to Spruce Grove City Council.

Mayor and Council

The City of Spruce Grove is governed by an elected council of a mayor and six aldermen. Spruce Grove City Council is responsible for identifying the overall vision for the community and developing a long-term strategic plan for the city. Council also reviews and approves new or amended policies, procedures, and bylaws and approves the annual corporate plan, which is the City's principal guiding document for providing residents with a high quality of life at an affordable rate, while also staying the strategic course of municipal economic sustainability.

Corporate Office

The Corporate Office includes the Chief Administrative Officer (CAO) who is responsible for the overall administration of the City of Spruce Grove and provides a key administrative leadership role to the organization. The CAO acts as a liaison between Spruce Grove City Council and Administration and ensures the implementation of City policies and programs. Corporate Communications and Economic and Business Development are also part of this area. Corporate Communications leads communications planning and consulting, branding and visual identity, writing and editing, issues management and media relations for the organization and supports the communication needs of other departments within the City. Economic and Business Development is responsible for facilitating programs and services intended to help local businesses prosper and grow, and attract new business and investment to Spruce Grove.

Corporate Services

Corporate Services is comprised of several areas: Asset Management, City Clerk's Office, Corporate Planning, Finance, Human Resources and Information Systems. The focus of Corporate Services is legislative and policy administration, information management, insurance and legal administration, election/census administration, financial and capital management, budget and reporting, corporate planning administration, asset management coordination, customer service

program coordination, website/database/City network administration, technical support, GIS administration, human resource management, labour and employee relations.


Community and Protective Services

Community and Protective Services is comprised of several areas: Family and Community Support Services and Social Planning, Recreation Services, Cultural Services, Protective Services and RCMP administration. Responsibilities include preventative social programming, counselling, indoor and outdoor facility management, open space planning, community events, Horizon Stage, volunteer development, Enforcement Services and integrated Fire/EMS. In addition, Community and Protective Services works as the City's administrative liaison to the Spruce Grove Public Library, RCMP Officer in Charge, TransAlta Tri Leisure Centre, Specialized Transit Service, Yellowhead Regional Library and Allied Arts Council, and facilitates a number of boards and committees including the Community Police Advisory Committee, Horizon Stage Theatre Advisory Board and the Joint Use Committee.

Planning and Infrastructure

Planning and Infrastructure is responsible for approvals and permits relating to construction of homes and businesses, urban planning, relations with the land development industry, long-term capital works planning, project management and construction, the monitoring of construction of new infrastructure by private interests, and the ongoing maintenance of most of the City's traditional servicing infrastructure and physical assets. It also manages long-range planning, community visioning, and defining and implementing the City's Sustainable Development Initiative. Furthermore, it is responsible for providing a number of primary services through contact arrangements, including commuter transit service, solid waste and recyclable materials collection, and all building, plumbing, electrical and gas inspections for new construction.

2016 SNAPSHOT



POPULATION
33,640

TOTAL
HOUSEHOLDS:
12,650

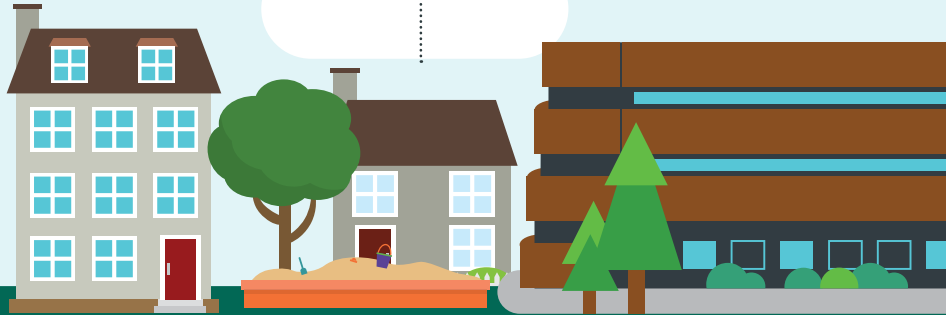
ONE YEAR
POPULATION
GROWTH:

5%

94%
OF RESIDENTS
WOULD
RECOMMEND
SPRUCE GROVE AS
A PLACE TO LIVE

**33.3
YEARS** AVERAGE AGE OF
SPRUCE GROVE
RESIDENTS

301
GARBAGE
RECEPTACLES



CURBSIDE COLLECTIONS (TONNES)

ORGANICS: **2,889**
RECYCLING: **2,384**
WASTE: **6,883**

1,482 KITCHEN
CATCHERS
DISTRIBUTED

ANNUAL
INCREASE
IN TRANSIT
RIDERSHIP:
4.3%

6
NEW
TRANSIT
BUSES

90,371 
TOTAL TRANSIT RIDERS



SPRUCE GROVE
ENFORCEMENT SERVICES
RESPONSES:

8,354



INCIDENTS RESPONDED TO BY
SPRUCE GROVE FIRE SERVICES
(WITHIN SPRUCE GROVE):

2,560



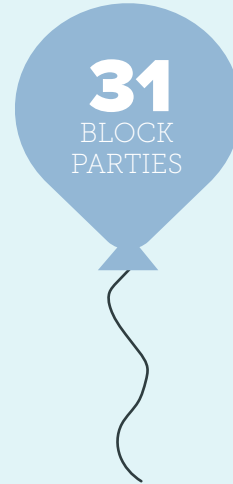
405,435

WEBSITE
VISITS

 **6,047** FACEBOOK FANS

 **5,035** TWITTER FOLLOWERS

 **490** INSTAGRAM FOLLOWERS



31
BLOCK
PARTIES

TOTAL HOURS OF DROP-IN
RECREATION PROGRAMS



526

325

TREES PLANTED

1,124

FIRE HYDRANTS

399

GARAGE SALES PROMOTED
THROUGH THE
CITY'S GARAGE SALE
ADVERTISING PROGRAM



HOUSING STARTS: **380**

TOTAL BUILDING PERMITS: **812**

TOTAL BUILDING PERMIT VALUE: **\$114M**

TOTAL DEVELOPMENT PERMITS: **783**

TOTAL SAFETY CODE PERMITS: **2,878**

ACTIVE BUSINESSES LICENSED: **1,368**

9,873

TICKETS SOLD FOR
HORIZON STAGE
SEASON PERFORMANCES



Where people choose to live



Meet the Camilleri family

After living in a small town in northern Alberta for more than a decade, pulling up your roots and planting them in a new, larger city can be an intimidating prospect.

But after moving to Spruce Grove from Fox Creek less than a year ago, Brandi Camilleri says her family feels right at home in their new community.

“We have always loved the feel of Spruce Grove,” says Brandi, who lives in the Lakewood neighbourhood with her husband Erick and children Janelle, Jeremy and Julia. “We feel like we are still in a smaller community, but with all the amenities of a city, which is a perfect fit for our family.”

When they started looking for a new place to call home, Erick says that Spruce Grove quickly checked off many of the boxes.

“I have family who live in both Stony Plain and Edmonton and Brandi would be closer to her family, who live in Coronation, so Spruce Grove was definitely ideal in terms of location,” he said. Plus, they are still close enough to Fox Creek where their oldest son Jesse, who graduated last year, continues to live.

They also liked the educational and recreational opportunities that were available for their children. Brandi says they specifically decided to move over the summer months so both Janelle, 15, and Jeremy, 13, could start the school year in Spruce Grove – especially with Janelle entering high school.

“I’ve made a lot of new friends and have really enjoyed the extra options that were available to me at school, like a sports medicine class I took,” says Janelle, who

“ We really enjoy living in a city that provides all the things we need and want, without losing that feeling of community. It’s truly the best of both worlds. – Brandi Camilleri ”

attends Spruce Grove Composite High School. She also joined a rugby team, which was a totally new experience for her.

Jeremy, who started Grade 7 at Greystone Centennial Middle School, quickly got involved in many school sports, even playing hockey as an option at school.

“There are so many cool things to do here,” says Jeremy, “both at school and when I’m with my family and friends on the weekend.”

And, of course, there are all the amenities that come with living in a larger, urban centre.

“There are so many options here,” laughs Brandi. “Coming from a smaller community, we had less choices and we had to travel for many things. Now, we love the variety of stores, restaurants, services and entertainment options that are literally outside our front door.”

A favourite destination for the family is the TransAlta Tri Leisure Centre.

“We love it there,” says Erick. “We can all go together, but do what we enjoy, whether it’s working out, playing basketball, skating, swimming or attending an event.”

The local movie theatre is also a popular spot for a date night for Brandi and Erick, or an evening out for Janelle and Jeremy with their friends.

This past winter, the family made good use of the outdoor rink in their neighbourhood and also enjoyed skating under the lights at Central Park.

“We’re an active family and Spruce Grove has such a great variety of parks, trails and playgrounds,” says Brandi. “We love getting outside and going for a walk or bike ride.”

Brandi has also enjoyed participating in a local fitness program for moms with Julia, who is just 18 months old, and plans to enroll her in dance and swimming lessons when she’s a bit older.

This summer, the family is looking forward to checking out local markets, garage sales, community events, and



exploring more of the surrounding lakes for camping and fishing.

“We truly feel Spruce Grove is a great place to live, and raise a family, because of the choices that are available for our children and the close proximity we have to so many great amenities,” says Brandi.

“We really enjoy living in a city that provides all the things we need and want, without losing that feeling of community. It’s truly the best of both worlds.”

RESIDENT SATISFACTION SURVEY RESULTS



84% rated Spruce Grove as an excellent or very good place to raise a family

81% said Spruce Grove offered an excellent or very good quality of life

94% said they would recommend Spruce Grove to others as a place to live

The survey was conducted by Banister Research on behalf of the City of Spruce Grove. A total of 400 telephone interviews were conducted from Oct. 24 to Nov. 5, 2016, with residents aged 18 or older.

Hot chocolate with a cop

Program connects local youth and law enforcement

A cup of hot chocolate is helping to dissolve some of the barriers between area youth and local law enforcement.

The Lions Log Cabin Youth Mentorship Program began hosting the Hot Chocolate with a Cop program in 2016 as a way to bring the two groups together to connect and meet in an informal and friendly setting.

Held on the first Tuesday of each month at the Log Cabin, it's an opportunity for members from the local RCMP detachment and Spruce Grove Enforcement Services to hang out with youth at the cabin, enjoy a cup of hot chocolate and help break down some of the stereotypes that can be associated with law enforcement.

"The youth get to see us as more than just a uniform," says Spruce Grove RCMP Const. Shelley Nasheim. "This is our job, but we are also people who are part of the community and we are here to help."

The Log Cabin, which is located in Central Park and operated by Spruce Grove Family and Community



RECREATION + RESOURCES

Border Paving Athletic Centre opens to the community

A space to meet, connect, learn and get active, the Border Paving Athletic Centre opened its doors to the public and celebrated its official grand opening last year.

Since then, the multi-purpose facility has become a vibrant hub for community development, city-wide recreation and leisure, and has attracted national tournaments and international athletes to its state-of-the-art gymnasium, which is home to the Aerials Gymnastics Club.

And, with the City's Recreation Services office space now located on its second floor, the centre also allows for extended service hours and community development assistance.

Facility highlights:

- A Community Resource Centre (Rec Hub) that provides an environment for sports, recreation, and non-profit organizations to access resource information and connect to other organizations in the community.
- A satellite library collection with resources that focus on board and volunteer development, and sports interest. Topics include strategic planning, governance, business planning, how to run a board and more.
- Meeting and multi-purpose rooms that are available to rent for programming, meetings, clinics and workshops.
- Community group opportunities to lease administrative, storage or program space.
- Two murals have been installed on interior walls of the centre. The larger mural pays tribute to the city's name by depicting a grove of trees, while the other focuses on the athleticism of community sport and recreation.



Support Services (FCSS) staff, also plays an important role in facilitating those connections.

“This is a very non-threatening environment and, in many ways, it’s less intimidating because we’re coming to them on their turf,” says Const. Nasheim. “It allows us to have those one-on-one conversations in a place where everyone can relax and be themselves.”

“It’s a great opportunity to present and share information in a more casual setting,” adds Spruce Grove Enforcement Officer Tom LeDrew. “They understand where I’m coming from, and I understand where they are coming from.”

And that, says Brendan Kronewitt, is really the goal of the Hot Chocolate with a Cop program.

“We wanted to help facilitate those connections and provide a place to build the relationships between youth and law enforcement,” says Kronewitt, who is the City’s FCSS Youth Mentorship Program Facilitator.

“The Log Cabin is a place for any youth to come and build genuine relationships not only with their peers, but with adults who care about the community.”

It’s also a chance for law enforcement to get to know the youth who spend time around the Log Cabin.

“These kids are all laid back, easy to talk to, approachable and genuine,” says Const. Nasheim. “By talking to them, you start to understand and realize what they need in terms of programs, mentors and other supports.”

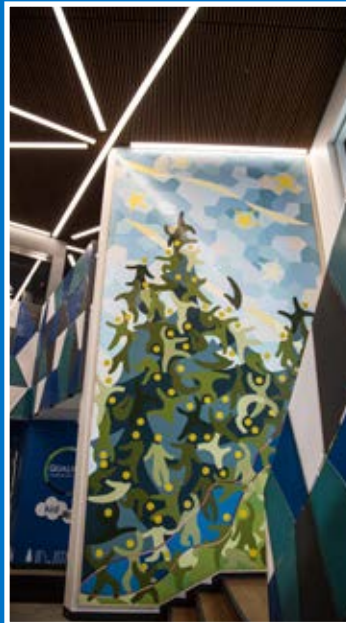
Over time, it also allows real connections and relationships to form.

“They start to open up about their own lives and that dialogue just continues,” says Officer LeDrew. “It’s about

“ We wanted to help facilitate those connections and provide a place to build the relationships between youth and law enforcement. ”
– Brendan Kronewitt

building mutual respect and helping to raise the next generation of good public citizens.”

The summer version of the program, called Scoops with a Cop, will run on July 4 and August 11, 2017, and the hot chocolate will be swapped out with a cool treat instead.



For more information on the facility visit www.sprucegrove.org/BPAC.

Round we go

New modern roundabout constructed in Spruce Grove

Drivers were introduced to a new-to-Spruce Grove traffic enhancement last year with the construction of a modern roundabout at the intersection of McLeod Avenue and Nelson Drive.

This circular intersection, which allows for free flow traffic at a reduced speed, was introduced to help manage traffic in the growing area around the McLaughlin neighbourhood.

Work on the project started in May 2016 and the roundabout officially opened later that year.

Additional roundabouts are now being planned for other intersections around Spruce Grove, including on Grove Drive and along Pioneer Road.

Why build a roundabout?

- Roundabouts allow for improved traffic flow, while also increasing intersection safety.
- Vehicles are not forced to stop, which reduces delays, congestion, noise and fuel consumption.
- Their design allows them to meet long-term traffic demands and accommodate vehicles of various sizes.
- There is less ongoing maintenance and related costs, as no traffic lights are required.
- Roundabouts continue to function during power failures.

When coming up to a roundabout, keep these four steps in mind:

- 1. APPROACH.**
Slow down and choose your desired lane.
- 2. YIELD.**
Look for oncoming traffic, as vehicles already in the roundabout have the right-of-way.
- 3. PROCEED.**
Watch for a safe opportunity to enter the roundabout.
- 4. EXIT.**
Use your right turn signal to indicate you are leaving the roundabout.

Did you know?

A modern roundabout is safer than a signalized intersection, as traffic moves through the intersection at a slower speed with fewer conflict points for pedestrians and drivers. The circular design reduces the number of head-on or right-angle, commonly referred to as T-bone, collisions. At a four-way intersection there are at least 32 possible vehicle-to-vehicle conflicts, while at a four-way roundabout there are only eight.



System enhancement

City enters agreement to accept U-Pass on transit service

Local college and university students saw a big incentive to start using Spruce Grove's transit service last year.

The City entered an agreement with Edmonton Transit Service (ETS) and other participating municipalities and post-secondary institutions in November 2016 to begin accepting the U-Pass on all Spruce Grove transit routes on Jan. 1, 2017.

The U-Pass provides eligible students with unlimited travel on all partner transit systems, including ETS, allowing students to seamlessly transfer from Spruce Grove's transit system to a neighbouring system with no additional cost.

"We heard loud and clear from area students that they wanted to be able to use their U-Pass on our system," says Patrick Inglis, Senior Sustainability Advisor with the City, "so when an opportunity came up to enter an agreement with the existing U-Pass partners, we were thrilled."

In addition to ETS, students with a U-Pass also have unlimited access to the transit systems in St. Albert, Strathcona County, Leduc and Fort Saskatchewan. Both Leduc and Fort Saskatchewan joined Spruce Grove as new partners in the U-Pass program.

The U-Pass is currently provided to students attending the University of Alberta, MacEwan University, NAIT and NorQuest College who pay a fee along with their tuition in exchange for the pass.

"We want to provide all our residents with an affordable, reliable and convenient mode of public transportation," says Inglis. "Accepting the U-Pass is definitely a step in that direction and we're looking forward to making future enhancements to the City's transit service."



Total transit riders
in 2016:

90,371

September and November were the busiest months for Spruce Grove transit with an average boarding of more than 600 people per day.

72% of riders live in Spruce Grove

62% of riders use the service
to commute to work

18% of riders use the service
to attend school

www.sprucegrove.org/transit



Artist rendering

Time to expand

Renovation approved for Protective Services building

A project to renovate and expand the City's current Protective Services building was approved by Spruce Grove City Council last year.

Located at 460 King St., the existing building is home to the City's Fire Services/EMS and Enforcement Services staff, as well as the RCMP detachment.

The \$21 million project will be done in a phased approach and includes an expansion on land east of the current facility, providing room for new administrative offices, equipment bays, dorms and training space.

Once the expansion, which will add another 3,300 square metres of space to the building, is complete, staff will move into the new area to allow renovations to be completed in the existing facility.

Site work will begin in 2017, with construction expected to start in the spring of 2018, followed by renovation work in early 2019. The entire project is anticipated to be complete in late 2019.

Fire/EMS and Enforcement service levels to the community will not be impacted during the construction and renovation phases.

In 2016, Spruce Grove Fire Services responded to a variety of incidents, including:



28	GARBAGE OR GRASS FIRES
28	FIRES CAUSING DOLLAR LOSS
81	PUBLIC HAZARD CALLS
214	FALSE ALARMS
163	MOTOR VEHICLE COLLISIONS
3,784	MEDICAL CALLS

In 2016, Spruce Grove Enforcement Services responded to a variety of calls including:

870

PARKING COMPLAINTS

84

DRIVING COMPLAINTS

482

PROPERTY BYLAW COMPLAINTS





Digging deep

The construction of a new water reservoir

To meet the water needs of the growing community, in early 2016 work started on the construction of a new reservoir for Spruce Grove. Work on the reservoir, which is located south of the rail tracks, between Golden Spike Road and Century Road, is scheduled to wrap up by the end of September 2017. Once complete, this site will be the fourth cell in the City's overall reservoir system, which will service the community to a population of 75,000 residents.

Reservoir at a glance:

- The new reservoir is approximately the same length and width as an NFL football field.
- It is six metres deep, or about the same height as an adult male giraffe.
- When filled, it will hold 19,000 cubic metres of water, which is the equivalent of 4.75 million 4-L milk jugs.
- To prepare the site, approximately 11,000 truckloads of material was moved to make the hole.



Did you know?

The average Spruce Grove resident uses 180 litres of water per day within their own home.





Where people choose to raise a family

Meet the Romphf family



With a framed picture of the Canadian flag hanging on the wall in their living room and the iconic striped Hudson's Bay blanket draped over the arm of their sofa, you quickly get the sense Matt and Kate Romphf are proud of where they live.

"We're definitely patriotic people," says Kate – and that passion extends not only to their country, but to the city they have called home for most of their lives.

"I can't think of anywhere else we'd rather live than Spruce Grove," adds Matt, as he prepares a snack for their almost two-year-old son William. "It has absolutely

everything we want and need in a place to raise our family."

Matt grew up near Spruce Grove, while Kate's family moved to the area when she was 11, so when the high school sweethearts were looking for their first home together, it was an easy decision to purchase a house in Spruce Village.

Then, when they found out Kate was pregnant with William, they decided the timing was right to look for their forever home. The first piece of criteria they gave their realtor?

“This is where we want to raise our children. I have great memories of my own childhood in the city and I want the same for our kids. – Matt Romphf”

“There was no question in our minds,” says Matt. “We knew we wanted to stay in Spruce Grove.”

Today the Romphfs are clearly settled in their home in the Deer Park neighbourhood, which they also share with their two dogs, a Yorkie named Duncan and a Cairn Terrier named Paddington.

And with a second baby on the way in November, they are feeling even more certain about their decision to raise their family in Spruce Grove.

“Spruce Grove has a quiet charm about it, but with the benefit of having all the amenities of a large city,” says Kate. “It’s a proper city, but with small-town values.”

They love taking William to the nearby playgrounds and parks, or going for a walk with their pups in the Heritage Grove Park trail system.

“That’s one of our favourite things about Spruce Grove,” Kate says. “You really feel like you are in the forest.”

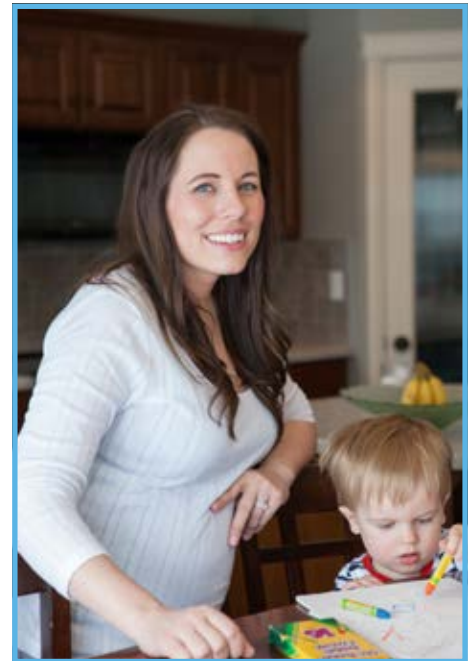
The variety of shops, restaurants and entertainment options is also very appealing to the young family.

“Since I’ve lived here for so many years, I remember when getting our first big box stores in Spruce Grove was a big deal,” laughs Matt. “It’s been exciting to watch the community continue to grow and become more diverse and now we’re at a point where you have everything you need right here.”

Combined with local events and festivals, like the Canada Day Celebration and Christmas in Central Park, Kate says you have the perfect mix.

“We have friends who live in Edmonton who come out here for our events because they are so fantastic.”

Spruce Grove has also remained the community of choice for many of their friends, some of whom they’ve known since junior high school.



“We’ve been able to keep many of those connections and maintain those relationships because we all want to stay in this community,” says Matt. Kate even managed to convince her sister to move to Spruce Grove and has no shame in her love and enthusiasm for the city.

“I’m always trying to recruit people to move to Spruce Grove,” she laughs. “I’m proud of our community and I want to share it with as many people as I can!”

For now, however, their focus will be on getting ready to share their home and their city with their upcoming new addition as their family grows by one more.

“This is where we want to raise our children,” says Matt. “I have great memories of my own childhood in the city and I want the same for our kids.”



Cultivating culture

New plan recognizes the role of culture in our community

A plan to strengthen and grow culture in Spruce Grove was presented to Spruce Grove City Council last year.

The new Cultural Master Plan outlines the importance of incorporating and supporting cultural activities and resources in Spruce Grove.

“There is a growing recognition that culture plays a powerful role in both supporting the local economy and contributing to a high quality of life in communities,” says Brent Oliver, the City’s Director of Cultural Services. “This plan will help us identify ways we can further support and grow culture within the city.”

It identifies five strategic directions, which are building cultural capacity, strengthening marketing and communications, supporting city centre revitalization, strengthening city identity, and supporting cultural programs and facilities.

It also recognizes culture as one of the four primary pillars of social sustainability.



“This is a 10-year vision for the City,” says Oliver. “I’m feeling very optimistic about what this will mean for the future of culture in Spruce Grove.”

An update on the Cultural Master Plan will be presented to council in the fall of 2017, including recommendations for 2018-2020. The plan can be found online at www.sprucegrove.org/culturalplan.



PILLARS OF SOCIAL SUSTAINABILITY

Social equity:

cohesion, inclusion, engagement and justice

Environmental responsibility:

ecological balance

Economic prosperity:

expanding employment and rising GDP

Cultural vitality:

creativity, diversity, heritage and innovation

Cultural resources in Spruce Grove in 2016

47 creative cultural industries

20 community cultural organizations

53 cultural facilities and spaces

42 natural heritage spaces

5 cultural heritage resources

13 festivals and events



Social sustainability

City completes plan to ensure long-term social prosperity

Identifying ways to meet the long-term needs of Spruce Grove's current and future residents is the goal behind the City's recently completed Social Sustainability Plan.

“This plan will help us anticipate and respond to the changing social needs that result from a rapidly growing city.”
– Janine Peter

Presented to Spruce Grove City Council in May 2016, the plan examines the connections between the economy, the environment, and society and how they can work together to ensure a continued quality of life for residents.

“We are a community that cares,” says Janine Peter, Director of Spruce Grove Family and Community Support Services. “This plan will help us anticipate and respond to the changing social needs that result from a rapidly growing city.”

The plan outlines eight key areas for action that will help the City proactively identify and address social issues as they arise, preserving the health and resiliency of residents and the larger community.

The key areas are:

1. Homeless population
2. Family and domestic violence
3. Public transportation
4. Housing
5. Access to programs, services and supports
6. Community engagement
7. Spruce Grove as an inclusive city
8. Civic governance and administrative practices

“Developing this plan was the first step in identifying ways to make Spruce Grove a place where residents can prosper in a supportive and healthy environment,” says Peter. “We are looking forward to bringing an update on the plan to city council in the fall of 2017.”

The full plan is available online at www.sprucegrove.org/socialsustainability.

A socially sustainable Spruce Grove:

Our community builds and sustains the necessary community based resources to support working together to meet the basic needs of all residents. We have strong relationships with municipal partners who are committed to contributing to our social sustainability goals and outcomes.

The City and community work to increase education and awareness of the social issues and opportunities in the community and help to build the capacity and individual and community resilience to anticipate, respond to and recover from changing economic, environmental and social conditions and situations.

In our community residents are active in their neighbourhoods and the city as a whole and the City works to provide meaningful opportunities for engagement and networking that enable all residents to articulate, and be responsible for, sustaining our quality of life and community wellness.

The vision and mission of the City reflect the value of and commitment to individual and community wellness and opportunities for all residents to see themselves involved in enhancing our quality of life.

Community social wellness is a critical criteria, used by the City, when providing current and future based direction and when making decisions on actions and financial allocations that will impact the social wellness of residents. We invest now to prepare for our future.



Excerpt from the Social Sustainability Plan

2016 CENSUS FINDINGS

Each year, the City of Spruce Grove conducts a municipal census to determine an official door-to-door count of the number of people living in Spruce Grove.

Overall population: 33,640



5% increase in population from 2015

49.9% are male and 50.1% are female

44% of households have three or more people in them

Average number of people per household: 2.66

47% of households completed the 2016 census online

26.5% are employed within Spruce Grove

Average age of Spruce Grove residents: 33.3 years

Occupied residential addresses: 12,650

Top three largest age groups in Spruce Grove are:

1. 30 to 34 years
2. 35 to 39 years
3. 0 to 4 years

www.sprucegrove.org/census



Up we grow!

RESIDENTIAL BUILDING PERMITS

157 single detached
152 semi-detached
24 multi-family (for a total of 47 units)
327 residential improvements
82 garages

Total = 742 residential building permits in 2016

Total residential building permit value = \$93.5 million

91% of total building permits issued in 2016 were for residential construction

HOUSING STARTS

380 total housing starts in 2016

150 single detached
146 semi-detached
78 rowhouse

Top 5 neighbourhoods for housing starts in 2016:

Harvest Ridge: 15%
Spruce Ridge: 19.1%
McLaughlin: 11.1%
Kenton: 12.2%
Greenbury: 14.4%

RESIDENTIAL DEVELOPMENT PERMITS

159 single detached
155 semi-detached
5 multi-family
230 improvements/alternations
17 garages

Total = 566 residential development permits in 2016

www.sprucegrove.org/permitactivity

Trash talk

City completes residential waste audit

Results from two waste audits completed last year showed that while Spruce Grove residents rock at recycling, there is room for improvement when it comes to using their green organics carts.

The audits, which were completed in June and November 2016 by consultant S-Cubed Environmental, involved collecting and sorting all the waste items from waste carts, organics carts and blue bags from a sample of 200 houses in Spruce Grove (100 houses per audit).

The findings showed 51 per cent of total waste was being diverted, but there was still a significant amount of materials being put in the wrong container. If everything had been properly sorted that diversion rate could have been as high as 77 per cent.

“What we found is that while residents are, for the most part, putting the correct items in blue bags for recycling, there are still a lot of recyclable materials that are being put in the trash,” says Caitlin Van Gaal, Environmental Coordinator with the City. “We’re glad to see the blue

bags are being used properly; we’d just like to see more of them on the curb each week.”

The audit showed 13 per cent of all waste items were being placed in blue bags, but, if all waste had been properly sorted, that number could have been 20 per cent.

The biggest opportunity for improvement, however, is tied to the green organics cart.

The audit showed that just 38 per cent of waste was being placed in organics carts and that number could have been closer to 56 per cent.

“With the exception of yard waste, residents are throwing other organics materials right in the trash,” says Van Gaal. The biggest offender? Food waste.

According to the waste audit findings, almost 90 per cent of food waste is being thrown into the garbage stream instead of being placed in a green cart.



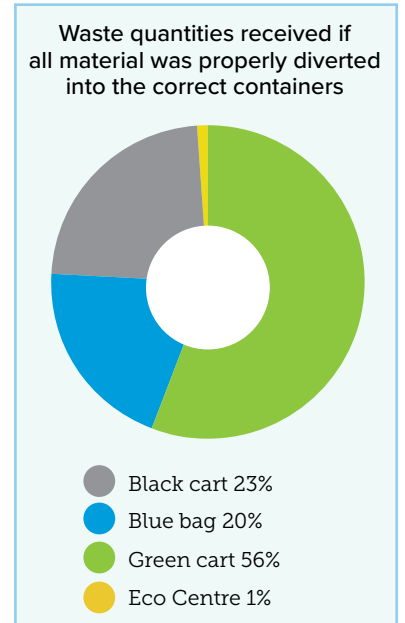
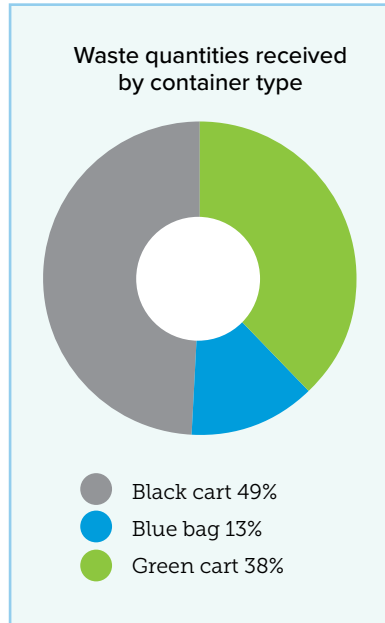


“The reality is when food waste, or any organic matter, is placed in a landfill, it doesn’t decompose and will often stay in its original form for decades. – Caitlin Van Gaal”

“It’s a common misconception that food will simply decompose when it’s thrown in the trash,” says Van Gaal. “The reality is when food waste, or any organic matter, is placed in a landfill, it doesn’t decompose and will often stay in its original form for decades. And if it does eventually biodegrade, it will produce methane gas, which is a very toxic greenhouse gas.”

Instead, Van Gaal suggests residents use a kitchen catcher help them properly divert their food waste.

“When you consider how much food waste is being thrown out instead of being turned into compost, improving that diversion rate would have a very positive impact on our landfills and the overall environment.”



ECO CENTRE STATS

The Eco Centre was a busy spot in 2016, with residents using the facility to drop of the following items:

- 353 tonnes of waste
- 284 tonnes of compost
- 861 tonnes of recycling
- 700 one-pound propane bottles
- 11,120 litres of cleaners, detergents, pesticides and other toxic chemicals
- 10,250 litres of acidic household chemicals
- 410 litres of antifreeze
- 30,875 litres of paint
- 1,567 tires
- 21,693 feet of light tubes
- 1,636 kilograms of CFL bulbs
- 1,559 kilograms of dry batteries
- 23,370 aerosol cans
- 100 fire extinguishers
- 83.8 tonnes of e-waste, such as computers



The Green Team

Last year members of Spruce Grove’s Green Team popped up at various locations around the city to talk about waste diversion and share the results of the City’s 2016 residential waste audit. Team members were able to “talk trash” with residents and provide information about how to divert waste and why it’s important to keep appropriate items out of the landfill.





Where people choose to grow a business

Perks Coffee House



Walk into Perks Coffee House and gathered around the fireplace is a group of ladies who are chatting and knitting. A pair of moms with their children in tow are visiting over a latte and a muffin, while a retired couple enjoy lunch in a corner and a business meeting wraps up at one of the tables.

This is the dream Ken Turlock and his partner Shantelle Lewis had when they opened Perks four years ago – to become more than just a place that sells coffee.

“We truly wanted to become a community meeting space,” says Ken. “We want to be the place where residents gather and connect.”

To say they have succeeded would be an understatement, thanks to a combination of hard work, community involvement, and, of course, a quality cup of java – prepared just the way you like it.

The idea to open a coffee shop first started brewing for Ken when he lived in Canmore and the first specialty coffee shop called Beamer’s Coffee Bar opened in 1994.

“I loved the feeling you had when you walked into that place,” recalls Ken. “It was different than anything else I’d experienced and that really appealed to me.”

The couple, who are also parents to Nathan, Nolan and Paige, first entertained the idea of opening a coffee shop in Spruce Grove in 2004, but the timing wasn’t quite right, and the location they had in mind didn’t work out.

Then one night, after eating dinner with the family at Peter’s Pizza & Steaks (which has since closed when owner Peter Matheos retired in 2014), the pair noticed one of the bays in the King Street Plaza building was vacant.

“ We truly wanted to become a community meeting space. We want to be the place where residents gather and connect. – Ken Turlock ”

“We thought it would be the perfect spot for a coffee shop,” says Ken, and on Oct. 4, 2013, Perks Coffee House was open for business.

“It was quite the learning curve,” recalls Ken, but with a focus on quality products and customer service, the shop began to see slow, organic growth.

“The community has been very supportive of us, right from the start,” he says. “And we truly appreciate everyone who walks in the door.”

Since then, Perks has expanded multiple times – first with the addition of the red double-decker bus, which is a common sight around the city at events like the Canada Day Celebration, city centre markets and other local events, and then into a kiosk space at Queen Street Place.

“We knew we wanted to expand from day one,” says Ken. “We just had to wait for the timing to be right.”

This year the business is growing again with a new retail location in Sherwood Park and as the on-site café at the University of Alberta Botanic Garden.

“We’re blazing our own trail beside everyone else,” says Ken, who doesn’t lose much sleep over competing with

the “big guys” in the coffee world. “We know our strengths and focus on how we can continually improve, which has allowed us to be successful.”

He also strongly believes it’s important to get out and give back to the people of Spruce Grove – a lesson he learned by watching other successful businesses, like Peter’s Pizza and Boston Pizza, which are both famous for supporting their community.

“We want to meet people on a personal level and the best way to do that is to get out and be in the community,” says Ken. “We appreciate the support that we have been shown, so we want to show that support to others.”

In addition to attending many local events, the coffee house hosts regular live music nights for aspiring musicians and decorates its walls with paintings and photos that are for sale by local artists. They were also involved as one of the businesses that helped organize last year’s New Year’s Eve celebration in Central Park and already have a busy summer ahead with local events and festivals.

“I have absolutely no regrets about our decision to open Perks in Spruce Grove,” says Ken. “We are a big community, but we are also one community, and you can’t ask for more than that.”



Growing up

City centre sees benefits of revitalization initiative

Spruce Grove's city centre saw a significant increase in both foot traffic and business investment last year as work got underway to revitalize the area.

The Spruce Grove City Centre Business Association hosted several events in Columbus Park, including weekly Cruise Nights and three public markets, while the Spruce Grove and District Chamber of Commerce held the Taste of Spruce Grove in the city centre for the first time. These events attracted thousands of people to the area.

The city centre, which encompasses the area from King Street to Calahoo Road and from First Avenue to the King Street Mall, also welcomed several new businesses in 2016 including a new pharmacy, insurance company and a

traction with existing businesses and we're very excited to see new enterprises want to do business downtown."

David Walker, Manager of Economic and Business Development with the City, which has partnered with the business association on this initiative, says momentum is clearly building.

"We've very pleased with the success the local business community had in 2016 and the City will continue to support the process as it moves forward," Walker says. "Revitalizing the area remains an important component of the City's Economic Development Strategy and while this is a long-term project, we've certainly had an excellent start."



specialty foods shop. Additionally, construction began on the McQueen Centre, which is located at the corner of Queen Street and McLeod Avenue.

"Our goal is to see Spruce Grove have a vibrant, clearly identifiable city centre and we're starting to reap the rewards of our hard work," says Victor Moroz, President of the Spruce Grove City Centre Business Association. "People are showing more interest in the area so we're gaining

Moroz agrees and says the association is planning to build on the momentum it created last year.

"We learned a great deal and are looking forward to enhancing our events this summer and finding new ways to bring our vision to life," he says. "It's going to be an exciting year for the city centre, the residents of Spruce Grove and our business community."



Taste of Spruce Grove
Hosted by the Spruce Grove and District Chamber of Commerce in June, the Taste of Spruce Grove featured local vendors who sold food and beverage samples.

Estimated attendance: 3,200 people

Public Markets

Residents enjoyed three public markets between July and September where they could shop, browse arts and crafts, try various foods and enjoy live music, dance troupes and more.

Estimated total attendance: 7,000 people

Number of participating vendors: 170



Cruise Nights

Every Thursday evening from June to September, car enthusiasts came together to showcase their classic cars.

30 collector cars (on the most attended evening)

SIGNS OF SUCCESS

Thousands of people visited the city centre in 2016 to take part in a variety of new events to help revitalize the area

For a list of 2017 events visit www.sprucegrovecitycentre.org.



LOOKING AHEAD

City works on update to economic development action plan

Building a strong and competitive economy that is ready for a range of investment opportunities is the focus of an update to the City's Economic Development Strategy and Action Plan.

The update was started in 2016 using a three-stage process to answer some key questions:

1. Where are we now?
2. Where do we want to go?
3. How do we get there?

The project, which is being led by the City's Economic and Business Development department and Economic Development Advisory Committee in collaboration with consultant MDB Insight, has resulted in a draft Economic Development Strategy Update and Action Plan 2017-2022.

Developed through extensive engagement and feedback, the updated strategy and action plan will be presented to Spruce Grove City Council for approval in mid-2017.

For more information visit www.sprucegrove.org/business.

Top marks

NAIT Spruce Grove Campus opens to students

Last year was a record year for educational pursuits in the City as the Northern Alberta Institute of Technology (NAIT) became the first post-secondary institution to open its doors in Spruce Grove.

ON CAMPUS IN 2016

240 students
6 on-site cranes
16-storey extension
capability



Photos courtesy of NAIT



“We have received a warm welcome from everyone in Spruce Grove since opening our campus. We couldn't be happier to be a part of this great community. – Dr. Glenn Feltham”

Accommodating NAIT's crane and hoisting operator programs, the NAIT Spruce Grove Campus welcomed 240 students in more than 20 classes to study mobile cranes and boom trucks, and learn on some of the world's most advanced technology.

The campus, located in the City's East Campsite Business Park, sits on 15 acres and features an innovative 12,650 square-foot facility that is outfitted with classrooms, offices and a cutting edge simulation lab.

“We have received a warm welcome from everyone in Spruce Grove since opening our campus,” said Dr. Glenn Feltham, President and CEO of NAIT. “Our students are really enjoying the new facility and learning environment. We couldn't be happier to be a part of this great community.”

Expressing similar sentiments, Mayor Stuart Houston says the NAIT Spruce Grove Campus has been a wonderful addition to Spruce Grove.

“By raising our profile as a competitive place to learn and do business, it's really been a game changer for us,” he says. “This new campus, as well as the staff and students, has contributed to the vibrancy of our community and we look forward to a long and prosperous partnership with NAIT.”

In future years, Feltham says he anticipates the polytechnic institute will expand the campus to accommodate additional programs.

“The campus in Spruce Grove provides us with the space we need to offer world-class crane and hoisting education and space to grow.”



Hands on learning

At the NAIT Spruce Grove Campus, crane and hoisting students spend approximately half their time outside in a 10-acre yard conducting training exercises. The other 50 per cent of their time is spent in a classroom, studying general theory, the principles of crane operation, capacity determination, chart reading, rigging, general safety and more.



Areas of employment

Crane and hoisting students contribute to the work force in the following industries:

- FORESTRY
- MINING
- CONSTRUCTION
- OIL



BOOMING BUSINESS

2016

COMMERCIAL, INDUSTRIAL AND INSTITUTIONAL BUILDING PERMITS

- 6 commercial buildings
- 45 commercial improvements
- 2 industrial buildings
- 10 industrial improvements
- 4 institutional buildings
- 3 institutional improvements

Total = 70 commercial, industrial and institutional building permits in 2016

Total building permit value = \$20.8 million

2016 was the sixth consecutive year new commercial building permit value exceeded \$10 million

COMMERCIAL, INDUSTRIAL AND INSTITUTIONAL DEVELOPMENT PERMITS

- 6 new commercial
- 40 commercial improvements
- 6 new industrial
- 30 industrial improvements
- 2 new institutional
- 5 institutional improvements

Total = 89 commercial, industrial and institutional development permits in 2016

www.sprucegrove.org/permitactivity



Winds of change

The landscape of Spruce Grove's northwest corner is changing, as commercial development got underway in Westwind Centre in 2016. Construction started on two office buildings and the overall vision for Westwind Centre is to develop a major regional commercial, hospitality and entertainment destination that would have a variety of retailers, offices, hotels, an entertainment centre, restaurants and residential development.



Final touches

Construction started on a new \$16 million medical building in the Tri Leisure Village development last year. Located south of the TransAlta Tri Leisure Centre, the \$75 million Tri Leisure Village is also home to a hotel, restaurants, businesses and the City's Border Paving Athletic Centre.

2016 Financial Summary

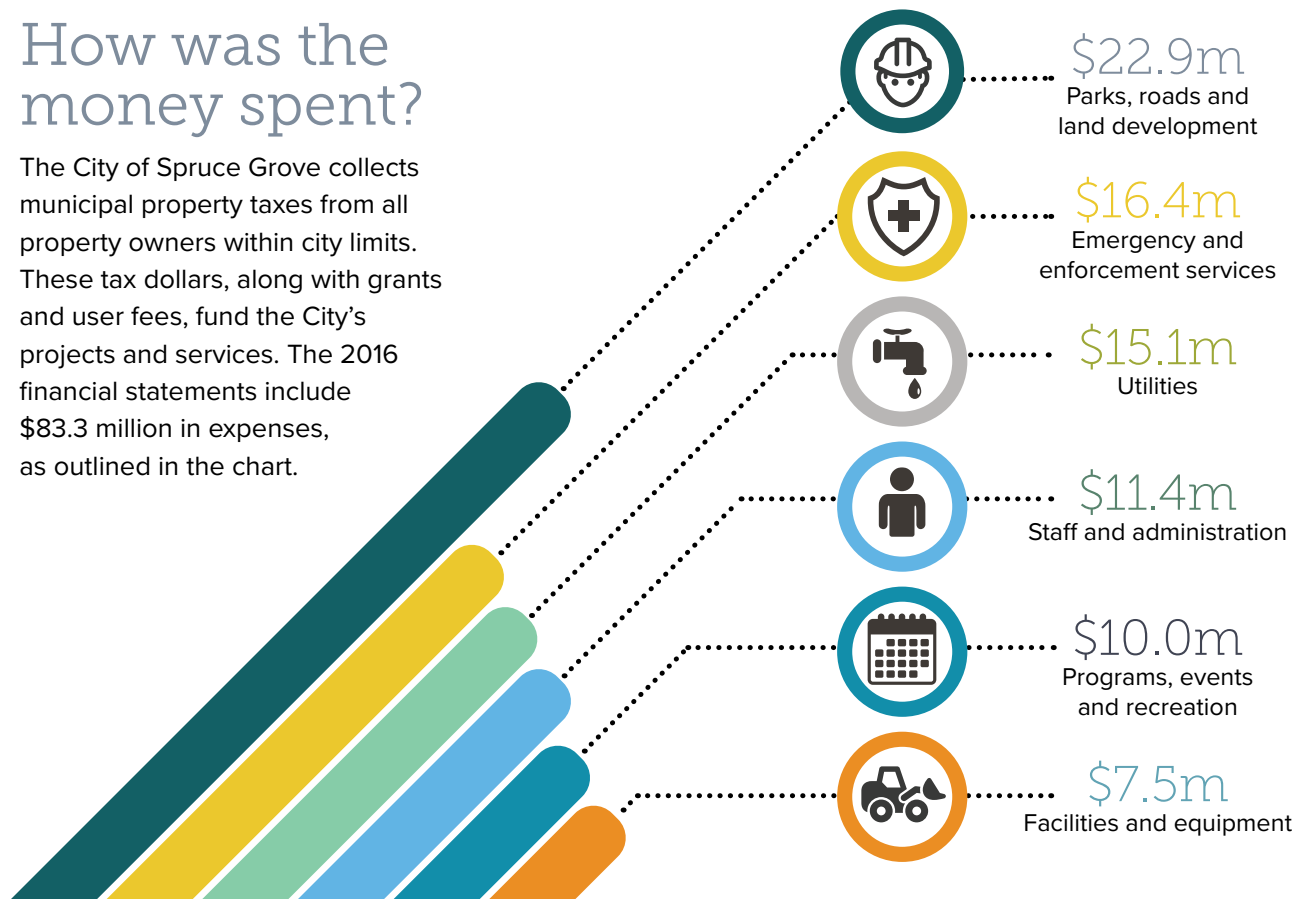
This financial summary is intended to assist with understanding the management of the City of Spruce Grove's resources. It provides an overview and highlights of the 2016 financial statements, including the operations of the municipality, the Spruce Grove Public Library and a share of the TransAlta Tri Leisure Centre.

A full version of the City's 2016 Consolidated Financial Statements is available on the City's website at www.sprucegrove.org/financialreports.



How was the money spent?

The City of Spruce Grove collects municipal property taxes from all property owners within city limits. These tax dollars, along with grants and user fees, fund the City's projects and services. The 2016 financial statements include \$83.3 million in expenses, as outlined in the chart.



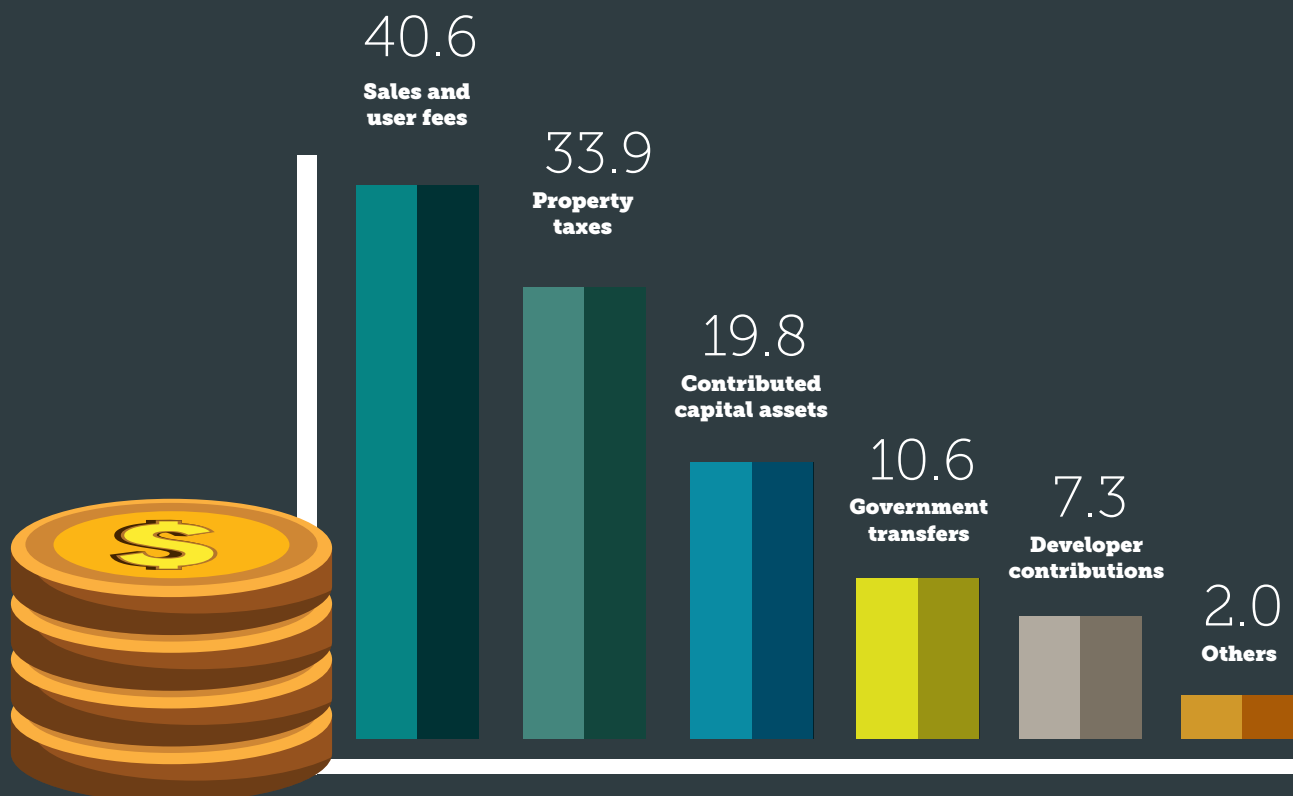


City revenue sources

The City of Spruce Grove's revenue comes from a variety of sources:

- **Property taxes:** Paid by Spruce Grove residents and businesses to help cover the costs of the municipal services they use.
- **Sales and user fees:** Includes utility charges, franchise fees, fines, permits and facility rentals.
- **Government transfers:** Funds the City receives from the provincial and federal governments, as well as neighbouring municipalities.
- **Developers:** Includes contributed tangible capital assets and contributions. Contributed tangible capital assets are items like roads and sewers that are constructed by developers and then handed over to the City to own and manage. Contributions are funds developers pay directly to the City.
- **Levies:** Collected on behalf of the Province of Alberta for education and on behalf of the Meridian Foundation for local seniors housing. The City does not set or control these levies and passes this revenue directly to both the Province and the Meridian Foundation.

2016 Revenues (\$ millions)





Financial summary

The annual consolidated financial statements provide important information about the financial position and activities of the City of Spruce Grove. Administration is responsible for the quality of the financial statements. The City's auditors have expressed their opinion that the financial statements are fairly stated.

The 2016 Consolidated Financial Statements are prepared in a prescribed format, using standard accounting terms and applying detailed accounting rules. The following summary is a condensed version of the City's financial statements.

Financial position (\$ millions)	2016	2015
Financial assets	57	57
Financial liabilities	66	62
Net debt	-9	-5
Non-financial assets	467	432
Accumulated surplus	458	427

Financial position

At the end of 2016, future revenues of \$9 million are required to pay for past transactions or events.

Surplus funds have accumulated over the history of the City to \$458 million. Virtually all surplus funds (\$447 million) have been used to build or buy roads, utilities, buildings and other capital assets used to deliver municipal services.

Financial activities

The City's financial activities include revenue, operating expenses and capital projects.

The result of 2016 operations is an annual surplus of \$30 million, and \$35 million was used in the acquisition of capital assets.

The budget tries to predict actual results as accurately as possible and most of the operations in 2016 were very close to budget, while capital projects came in under budget.

Financial activities (\$ millions)	Budget	2016	2015
Revenue – operations	77	80	76
Expenses – operations	83	83	82
Annual deficit from operations	-6	-3	-6
Revenue – capital	55	34	35
Annual surplus	49	31	29
Expenses – capital	-64	-49	-51
Net financial (debt) assets			
Change	-4	-4	-10
Opening		-5	5
Closing		-9	-5



City Hall

315 Jespersen Ave. T7X 3E8

Phone: 780-962-2611

Monday to Friday 8:30 a.m. – 4:30 p.m.

www.sprucegrove.org

