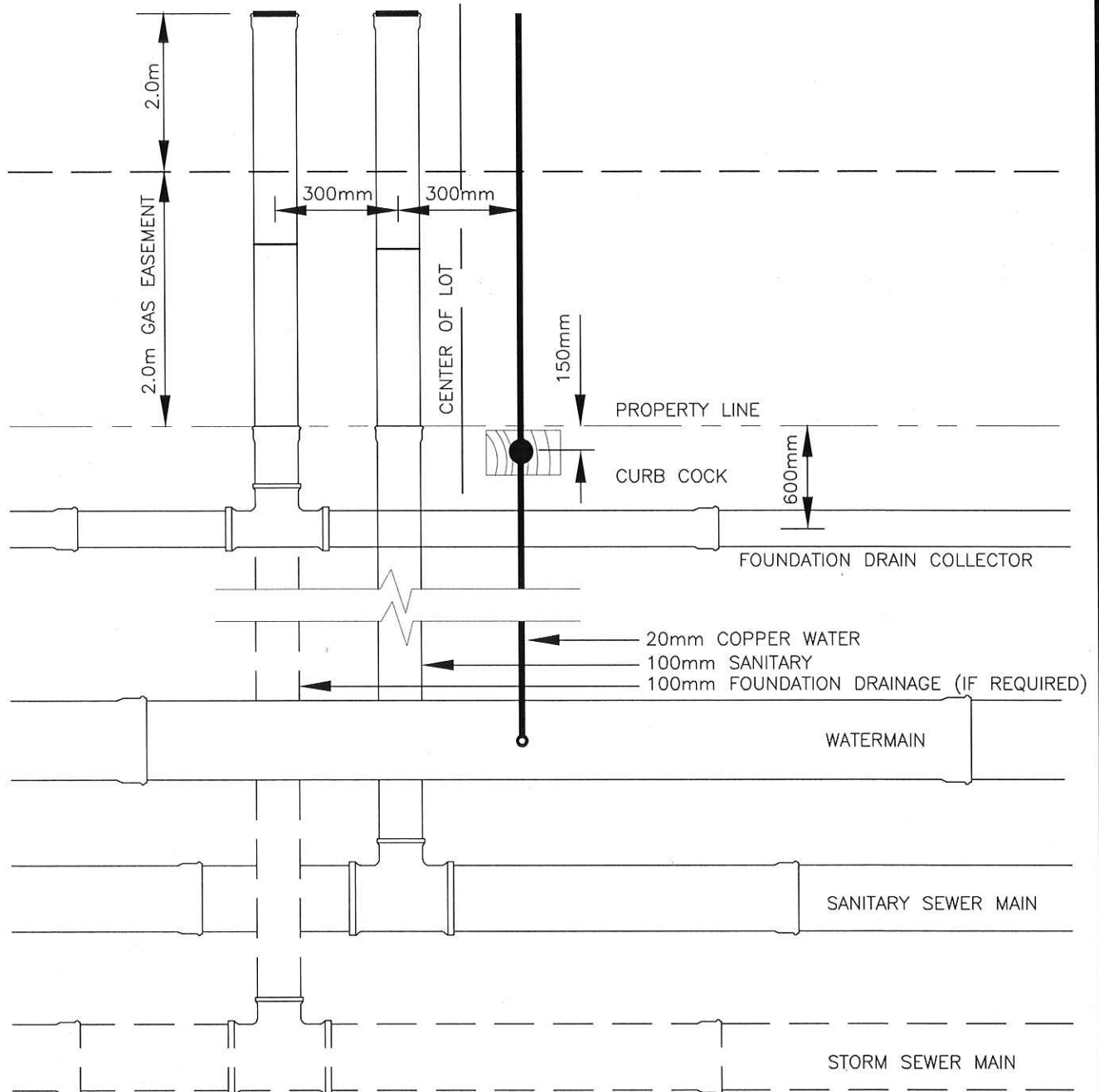


CAP END OF SANITARY (RED PLUG) AND STORM (GREEN PLUG)



NOTES:

- THE CITY ACCEPTS NO RESPONSIBILITY FOR THE CONSTRUCTION OR MAINTENANCE OF THE SERVICES BEYOND PROPERTY LINE
- THE END OF THE COPPER WATER SERVICE SHOULD NOT BE CRIMPED CLOSED, PERMEABLE FILTER CLOTH WILL BE USED TO PREVENT INTRUSION OF DEBRIS AND TO ALLOW TESTING FLOW OF CURBSTOP.
- MARK CURB COCK WITH A 50x100x750mm STAKE PAINTED RED.
- FOUNDATION DRAINAGE TO BE CONNECTED TO STORM SERVICE IF IN STREET OR TO SEPARATE FOUNDATION DRAIN COLLECTOR AS SHOWN

THE CITY OF
SPRUCE GROVE

PLANNING AND INFRASTRUCTURE

REVISIONS

DATE	DETAILS	DRAWN
4/12	Add'n of Plug Colors	RP
4/12	Rev. Extension into PL	RP

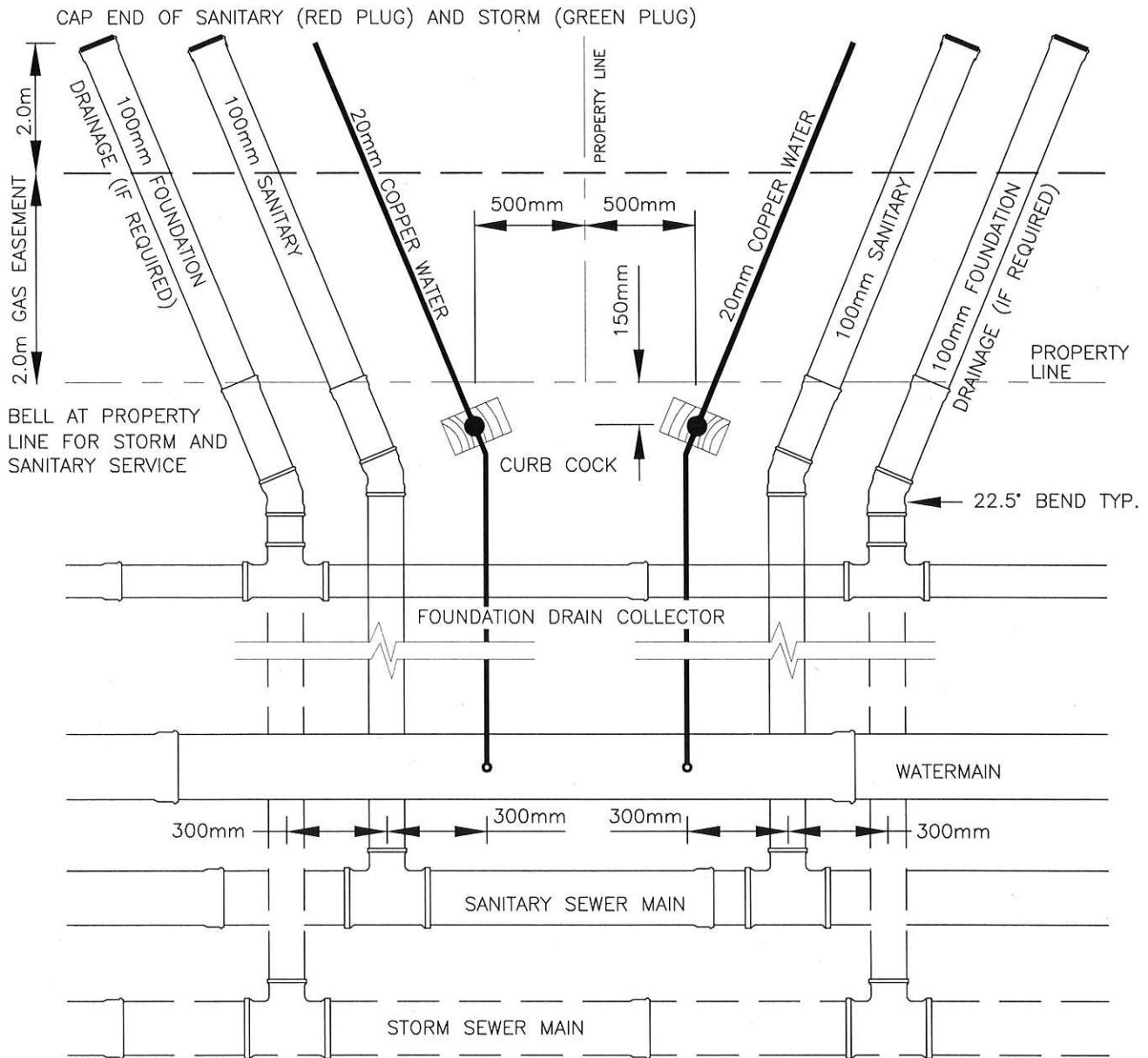
SINGLE SERVICE DETAIL



DRAWN: T. CRAWFORD	DATE: MARCH 6, 2006
CHECKED: J. MUSTARD	SCALE: NOT TO SCALE
APPROVED: J. MUSTARD	DRAWING No.: SE-01

XREFS

C:\DETAILS\SHEET2-TK



NOTES:

- THE CITY ACCEPTS NO RESPONSIBILITY FOR THE CONSTRUCTION OR MAINTENANCE OF THE SERVICES BEYOND PROPERTY LINE
- THE END OF THE COPPER WATER SERVICE SHOULD NOT BE CRIMPED CLOSED, PERMEABLE FILTER CLOTH WILL BE USED TO PREVENT INTRUSION OF DEBRIS AND TO ALLOW TESTING FLOW OF CURBSTOP.
- FOUNDATION DRAINAGE TO BE CONNECTED TO STORM SERVICE IF IN STREET OR TO SEPARATE FOUNDATION DRAIN COLLECTOR AS SHOWN

THE CITY OF
SPRUCE GROVE

PLANNING AND INFRASTRUCTURE

REVISIONS

DATE	DETAILS	DRAWN
4/12	Rev. Distance from PL	RP
4/12	Rev. Extension into PL	RP

DOUBLE SERVICE DETAIL



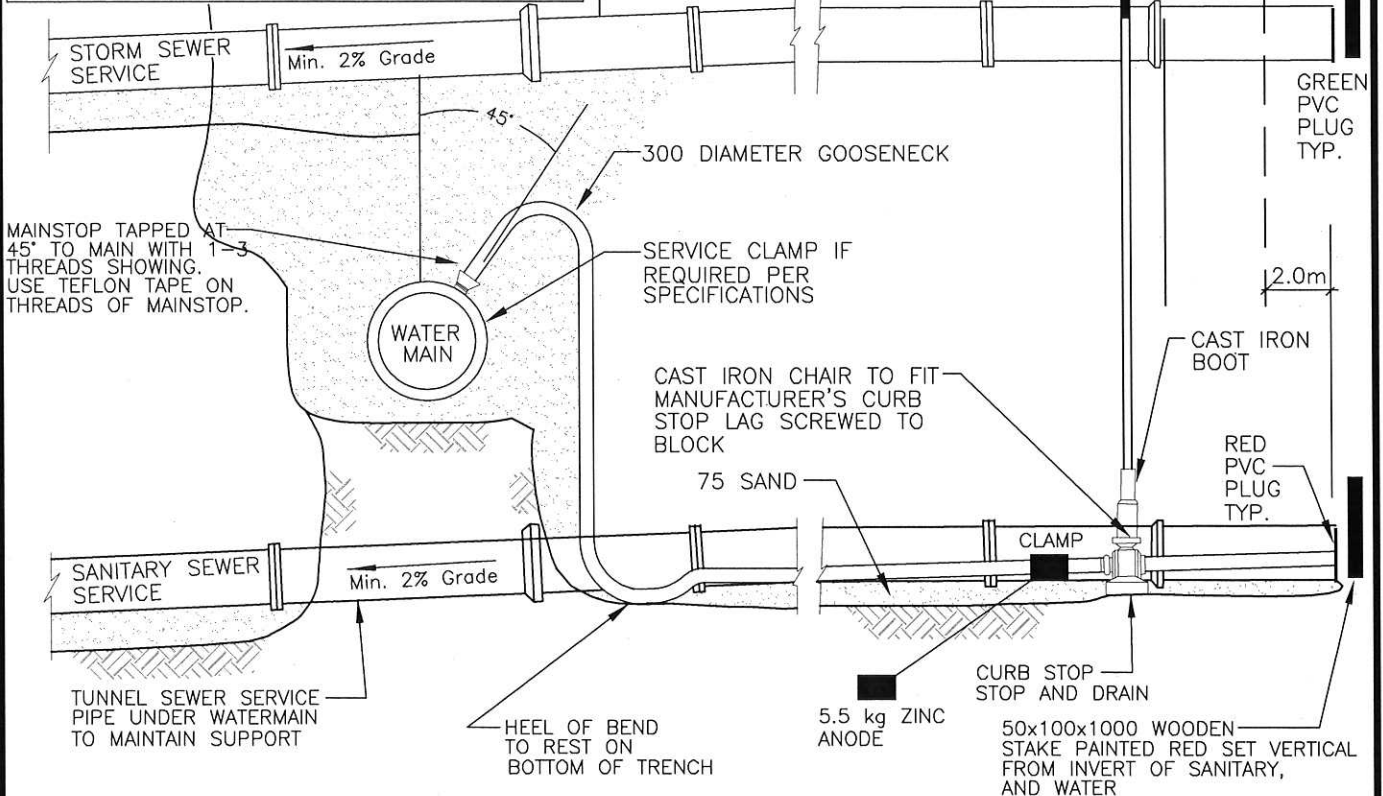
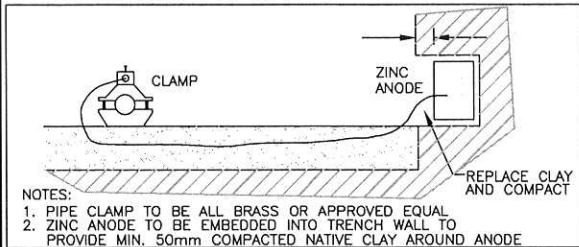
DRAWN: T. CRAWFORD	DATE: MARCH 6, 2006
CHECKED: J. MUSTARD	SCALE: NOT TO SCALE
APPROVED: J. MUSTARD	DRAWING No.: SE-02

XREFS

C:\DETAILS\SHEET2-TK

NOTES:

1. WATER SERVICE PIPE TO BE TYPE K SOFT COPPER, 20MM DIAMETER MINIMUM AND 25MM DIAMETER WHERE SPECIFIED DUE TO LENGTH OR OTHER CONDITIONS.
2. AN ADDITIONAL GOOSENECK IS REQUIRED AT EACH SEWER CROSSING.
3. MAINSTOPS TAPS SHALL BE A MINIMUM OF 600MM APART AND NO LESS THAN 300MM TO A COUPLING OR COLLAR.
4. COPPER SERVICE SHALL BE ONE CONTINUOUS PIECE UNLESS LENGTH EXCEEDS 20M AND ONLY THEN WILL A DOUBLE UNION BE ALLOWED.
5. SERVICE CLAMPS REQUIRED WHERE MAIN STOP EXCEEDS 20MM FOR 150MM MAIN AND 25MM FOR 200MM-400MM MAINS.
6. SEWER SERVICE PIPE SHALL BE PVC PIPE, SDR 35, ASTM D3034, AND 100MM DIAMETER (MIN.) UNLESS OTHERWISE SPECIFIED.
7. INVERT ELEVATION AT PL SHALL BE MIN. 2.60M BELOW DESIGN FINISHED GRADE. USE DESIGN INVERT OF SERVICE WHERE INDICATED.
8. (A) SEWER SERVICES TO BE CONNECTED TO PVC MAIN WITH IN-LINE WYES OR TEE-WYES. (B) USE OTHER APPROVED CONNECTION TO OTHER THAN PVC PIPE.



THE CITY OF
SPRUCE GROVE

PLANNING AND INFRASTRUCTURE

REVISIONS

DATE	DETAILS	DRAWN

SERVICE CONNECTION DETAIL



DRAWN: T. CRAWFORD	DATE: MARCH 6, 2006
CHECKED: J. MUSTARD	SCALE: NOT TO SCALE
APPROVED: J. MUSTARD	DRAWING No.: SE-03

XREFS

C:\DETAILS\SHEET2-TK

50x100 WOODEN STAKE
WITH EXPOSED PORTION
PAINTED RED.

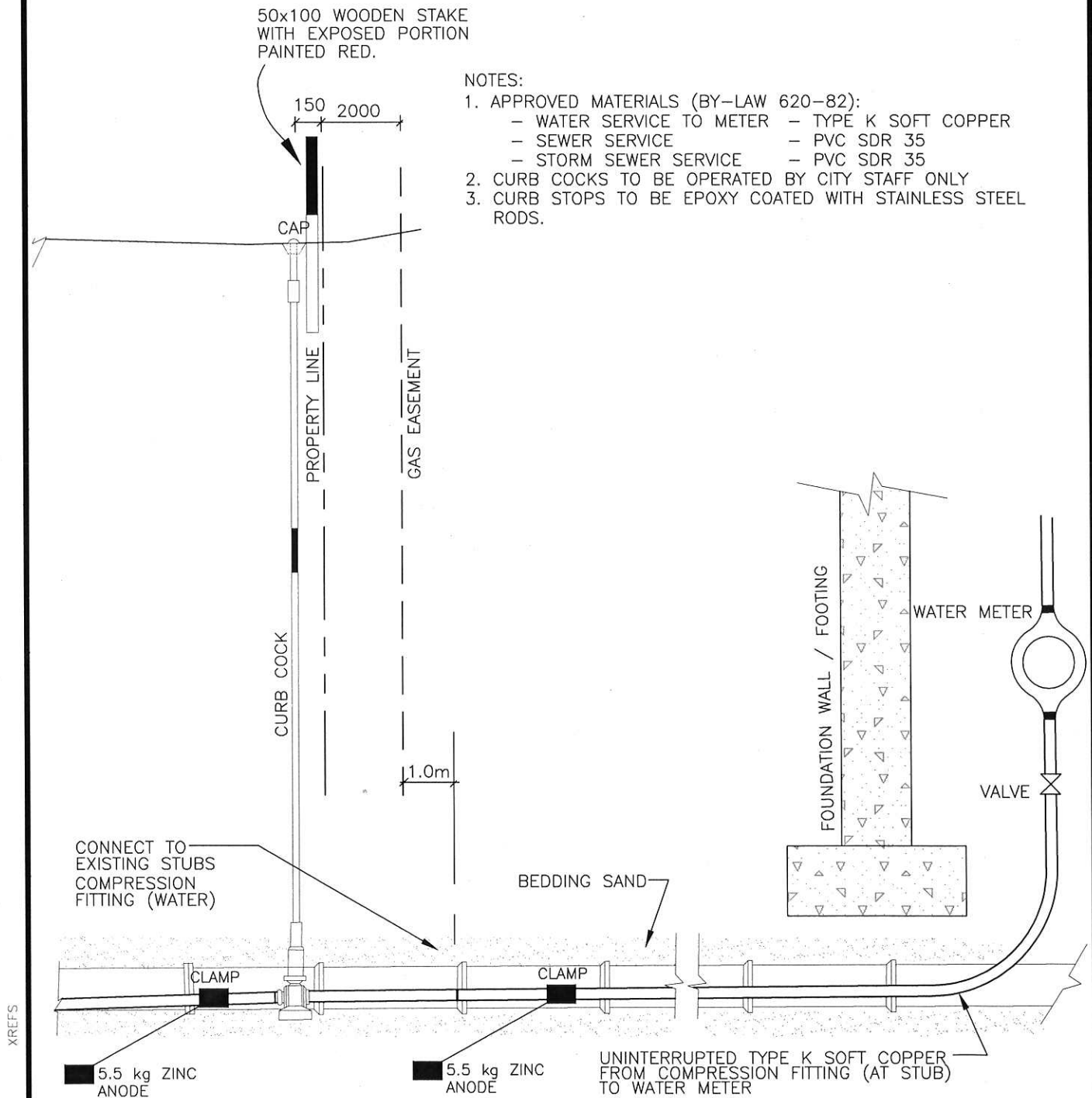
NOTES:

1. APPROVED MATERIALS (BY-LAW 620-82):

- WATER SERVICE TO METER - TYPE K SOFT COPPER
- SEWER SERVICE - PVC SDR 35
- STORM SEWER SERVICE - PVC SDR 35

2. CURB COCKS TO BE OPERATED BY CITY STAFF ONLY

3. CURB STOPS TO BE EPOXY COATED WITH STAINLESS STEEL RODS.



THE CITY OF
SPRUCE GROVE

PLANNING AND INFRASTRUCTURE

REVISIONS

DATE	DETAILS	DRAWN

WATER AND SEWER TO HOUSE



DRAWN: T. CRAWFORD

DATE: MARCH 6, 2006

CHECKED: J. MUSTARD

SCALE: NOT TO SCALE

APPROVED: J. MUSTARD

DRAWING No.: SE-04

XREFS

C:\DETAILS\SHEET2-TK

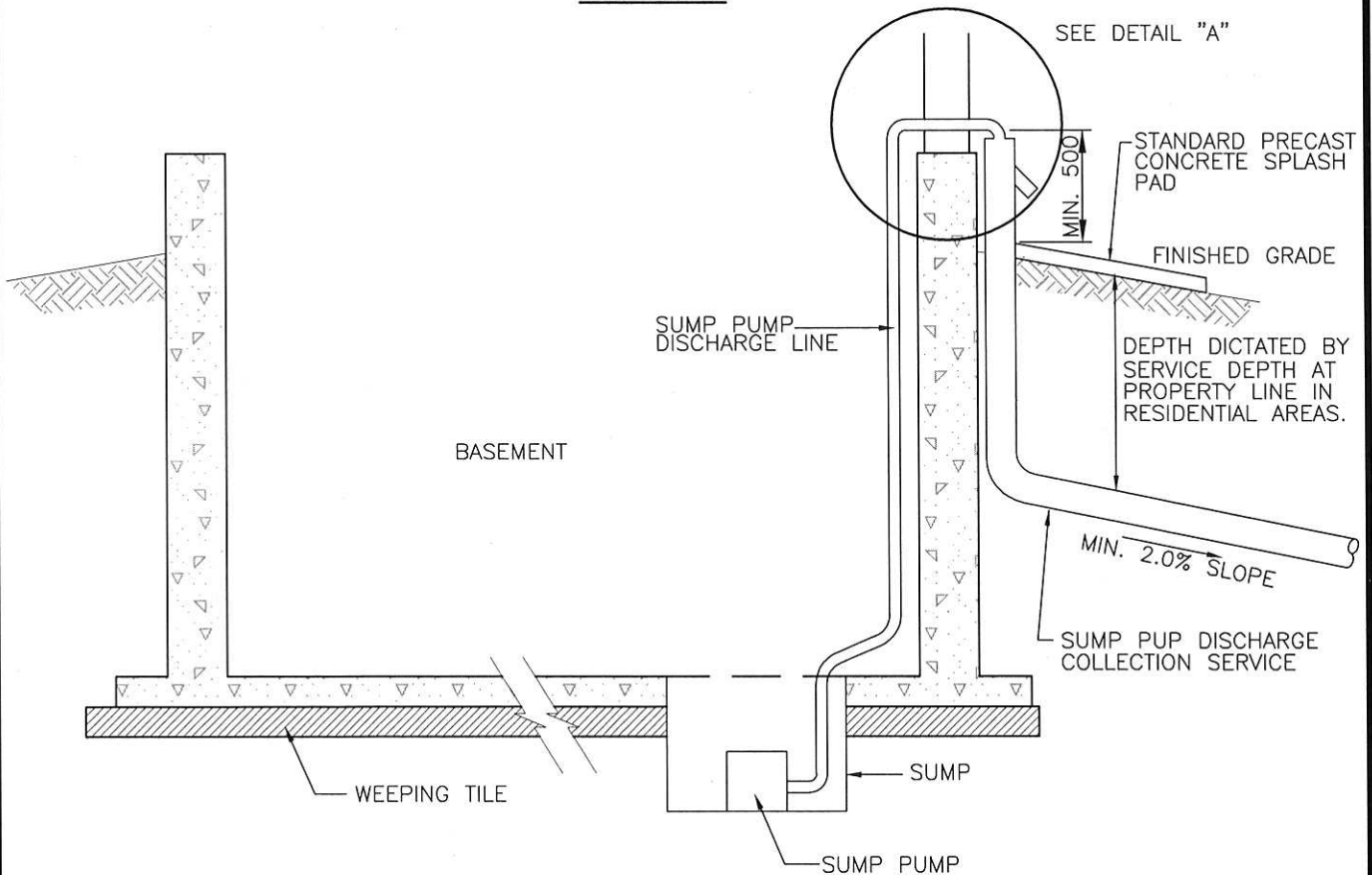
38mm DISCHARGE LINE

CLOSED FITTING

AUXILLARY
SURFACE DISCHARGE

SUMP PUMP DISCHARGE
COLLECTION SERVICE

DETAIL A



NOTES:

1. ROOF LEADERS (DOWNSPOUTS) OR ANY OTHER STORM WATER SOURCE MUST NOT BE CONNECTED TO THE SUMP DISCHARGE COLLECTION SERVICE LINE.
2. THE AUXILIARY SURFACE DISCHARGE MUST BE INSTALLED TO PROVIDE AN OVERFLOW IN THE EVENT THAT THE STORM DRAINAGE SYSTEM CANNOT ACCOMMODATE FLOWS DUE TO CAPACITY, FREEZING OR OTHER PROBLEMS.

THE CITY OF
SPRUCE GROVE

PLANNING AND INFRASTRUCTURE

REVISIONS

DATE	DETAILS	DRAWN

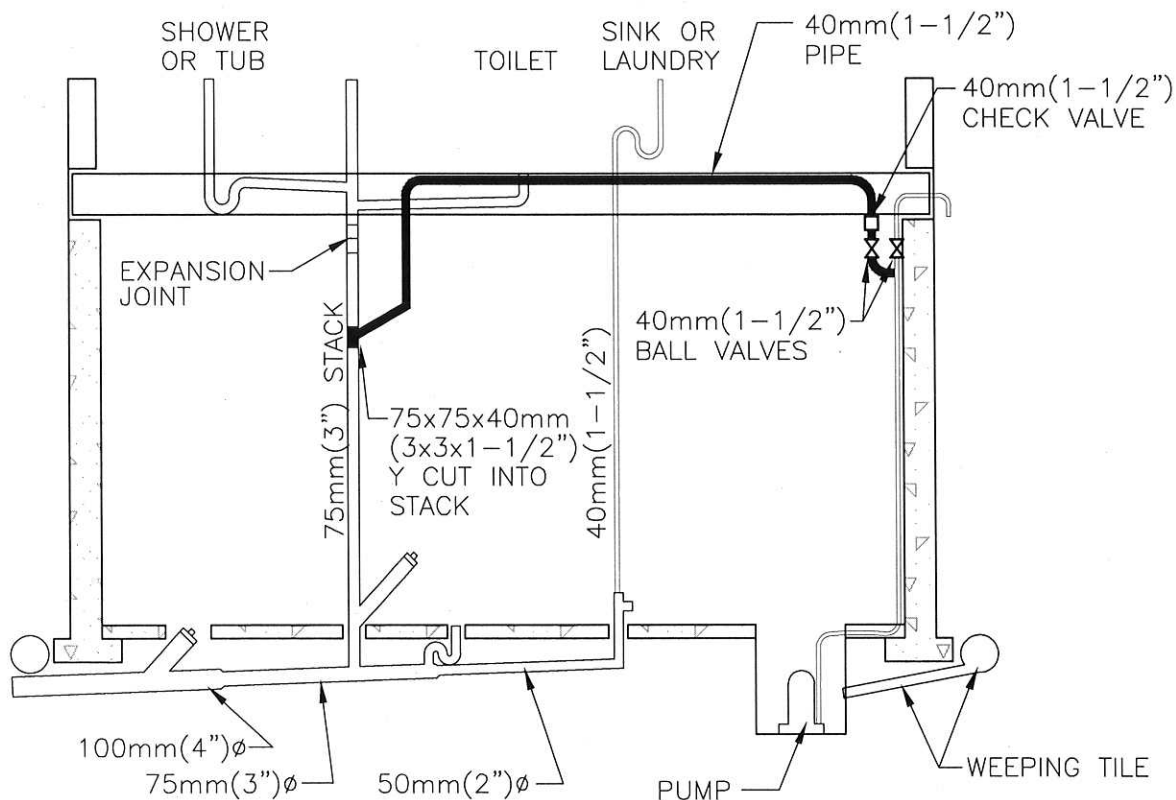


SUMP PUMP CONNECTION

DRAWN: T. CRAWFORD	DATE: MARCH 6, 2006
CHECKED: J. MUSTARD	SCALE: NOT TO SCALE
APPROVED: J. MUSTARD	DRAWING No.: SE-05

XREFS

C:\DETAILS\SHEET2-TK




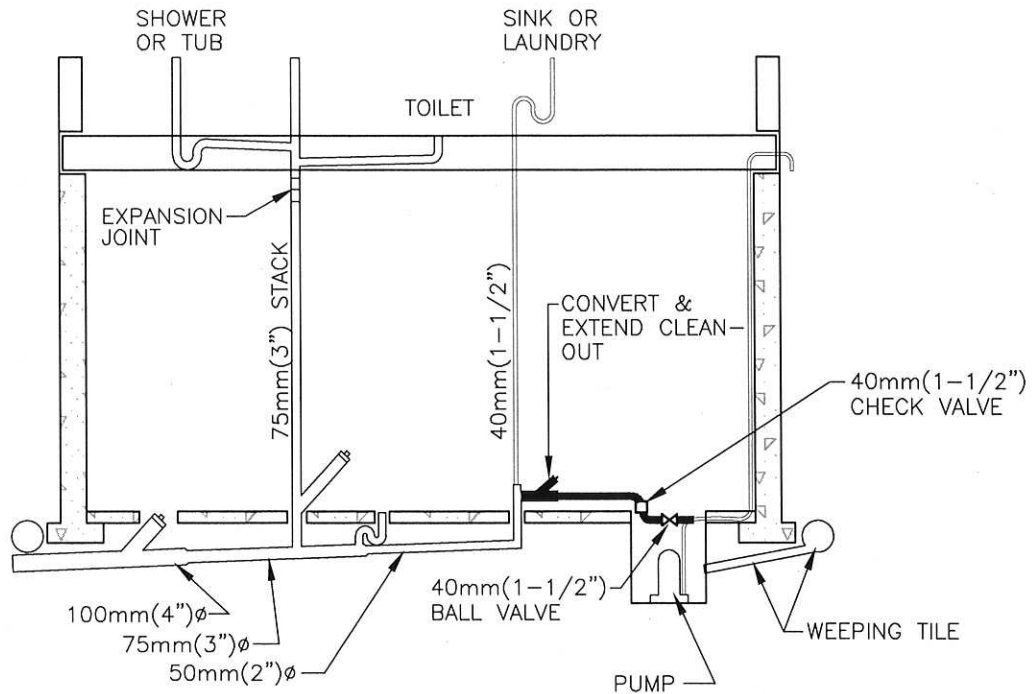
XREFS

THE CITY OF
SPRUCE GROVE

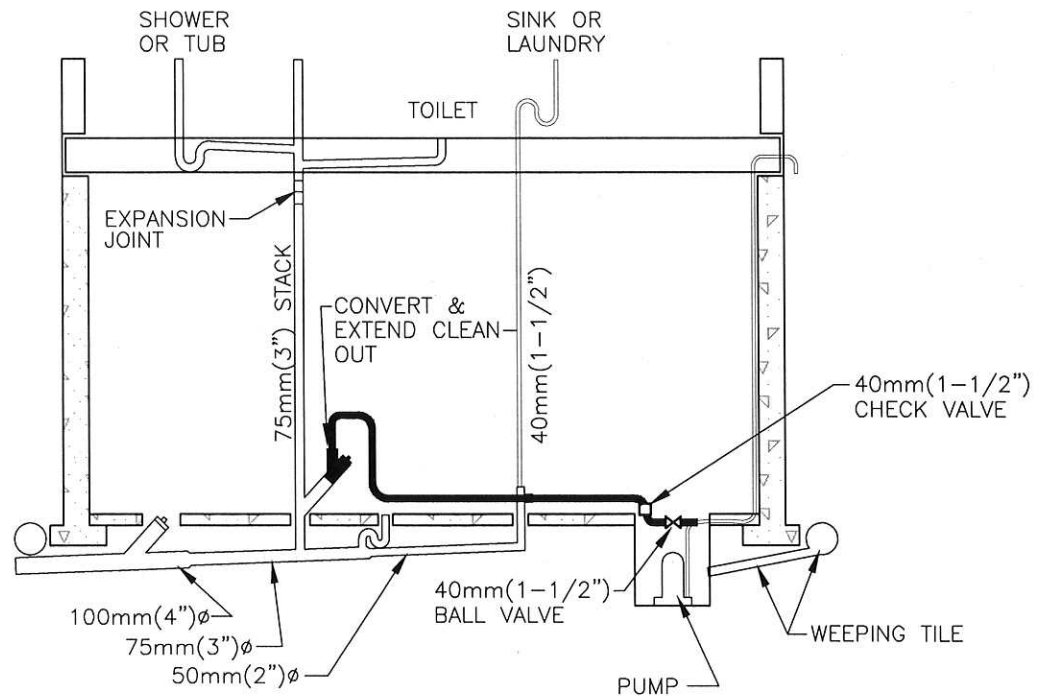
PLANNING AND INFRASTRUCTURE

C:\DETAILS\SHET2-TK

REVISIONS			SUMP PUMP BYPASS – DUAL BALL VALVE		
DATE	DETAILS	DRAWN			
				DRAWN: T. CRAWFORD	DATE: MARCH 6, 2006
				CHECKED: J. MUSTARD	SCALE: NOT TO SCALE
				APPROVED: J. MUSTARD	DRAWING No.: SE-06



OPTION 1



OPTION 2

THE CITY OF
SPRUCE GROVE

PLANNING AND INFRASTRUCTURE

REVISIONS

DATE	DETAILS	DRAWN

SUMP PUMP BYPASS – SINGLE BALL VALVE



DRAWN: T. CRAWFORD

DATE: MARCH 6, 2006

CHECKED: J. MUSTARD

SCALE: NOT TO SCALE

APPROVED: J. MUSTARD

DRAWING No.: SE-07

XREFS

C:\DETAILS\SHEET2-TK