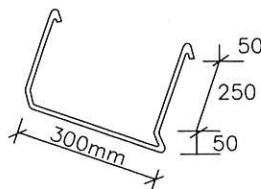


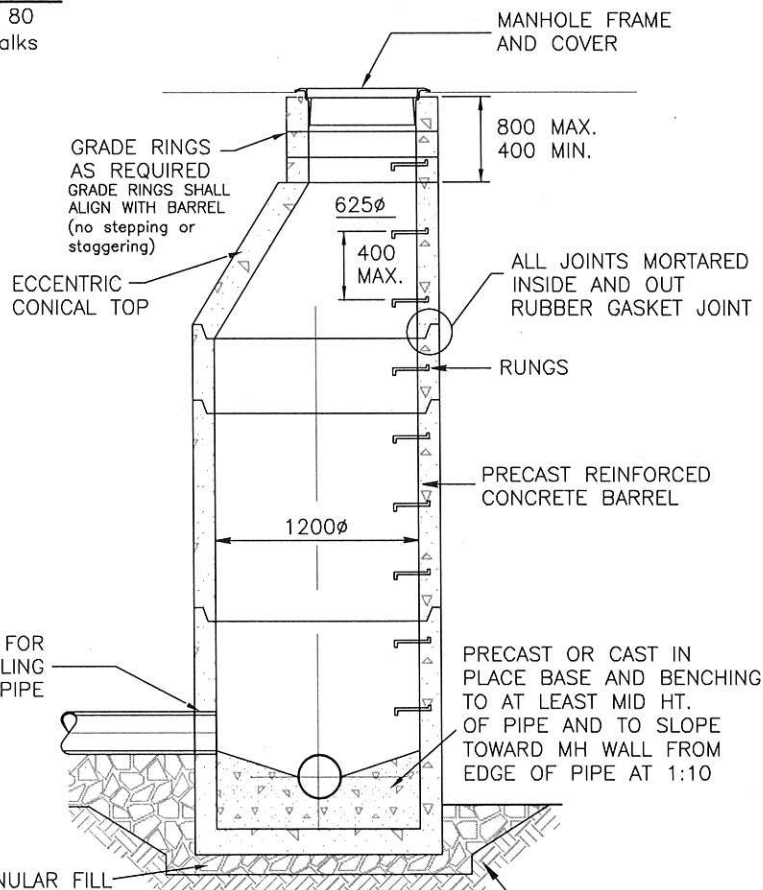
### STANDARD FRAME & COVER

Use Norwood N.F.80 or Trojan T.F. 80  
on all manholes in roadways or walks  
(SEE DRAWING SY-05)



### SAFETY TYPE M.H. RUNG

ALUMINUM SPACING TO BE  
400mm CENTRE TO CENTRE



#### NOTES:

1. MANHOLES OF DEPTH GREATER THAN 7m REQUIRE AN ALUMINUM SAFETY PLATFORM.
2. ALL SEWER MAINS TYING INTO TRUNK MANHOLES MUST BE EXTENDED PAST CONCRETE SLAB SO THAT IT IS BOTH VISIBLE AND ACCESSIBLE FROM THE SURFACE.

THE CITY OF  
SPRUCE GROVE

## PLANNING AND INFRASTRUCTURE

#### REVISIONS

DATE	DETAILS	DRAWN
04/15	ADDITIONAL NOTES	RP

### STANDARD SANITARY MANHOLE



DRAWN: T. CRAWFORD

DATE: MARCH 6, 2006

CHECKED: J. MUSTARD

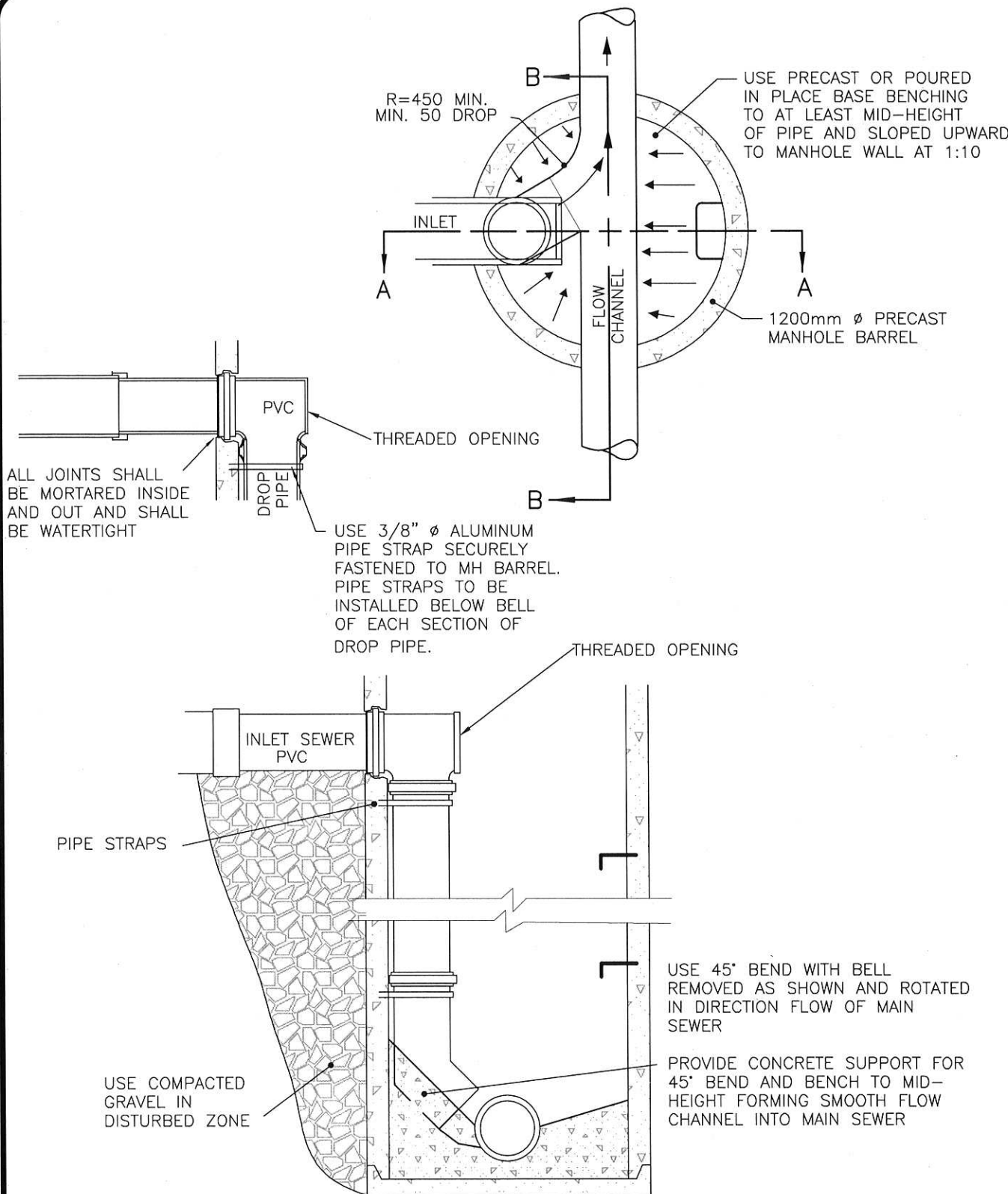
SCALE: NOT TO SCALE

APPROVED: J. MUSTARD

DRAWING No.: SY-01

XREFS

C:\DETAILS\SHEET2-TK



THE CITY OF  
SPRUCE GROVE

## PLANNING AND INFRASTRUCTURE

### REVISIONS

DATE	DETAILS	DRAWN

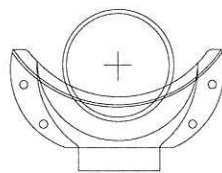
### INTERIOR DROP MANHOLE



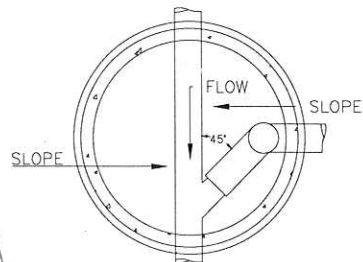
DRAWN: T. CRAWFORD	DATE: MARCH 6, 2006
CHECKED: J. MUSTARD	SCALE: NOT TO SCALE
APPROVED: J. MUSTARD	DRAWING No.: SY-02

XREFS

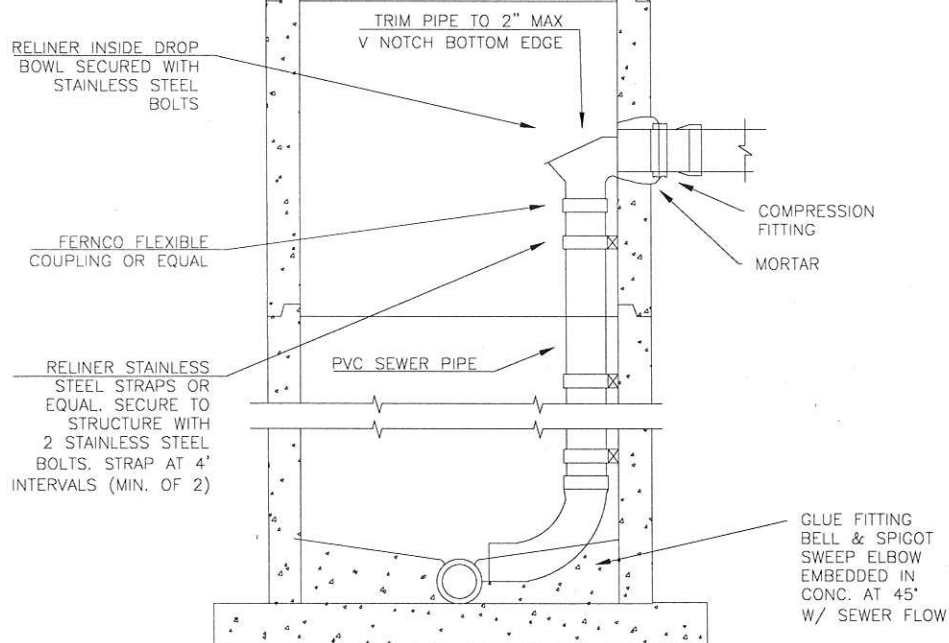
C:\DETAILS\SHEET2-TK



DROP BOWL  
MOUNTING  
POSITION



INSIDE DROP - PLAN



NOTES:

1. SECURE DROP PIPE TO MANHOLE WITH RELINER-DURAN INC. STAINLESS STEEL ADJUSTABLE CLAMPING BRACKETS.
2. FOR MORE INFORMATION ON DROP BOWL TYPES, SIZES AND BRACKETS, GO TO [WWW.RELINER.COM](http://WWW.RELINER.COM)

THE CITY OF  
SPRUCE GROVE

# PLANNING AND INFRASTRUCTURE

REVISIONS		
DATE	DETAILS	DRAWN

## INTERIOR DROP MANHOLE - ALTERNATIVE

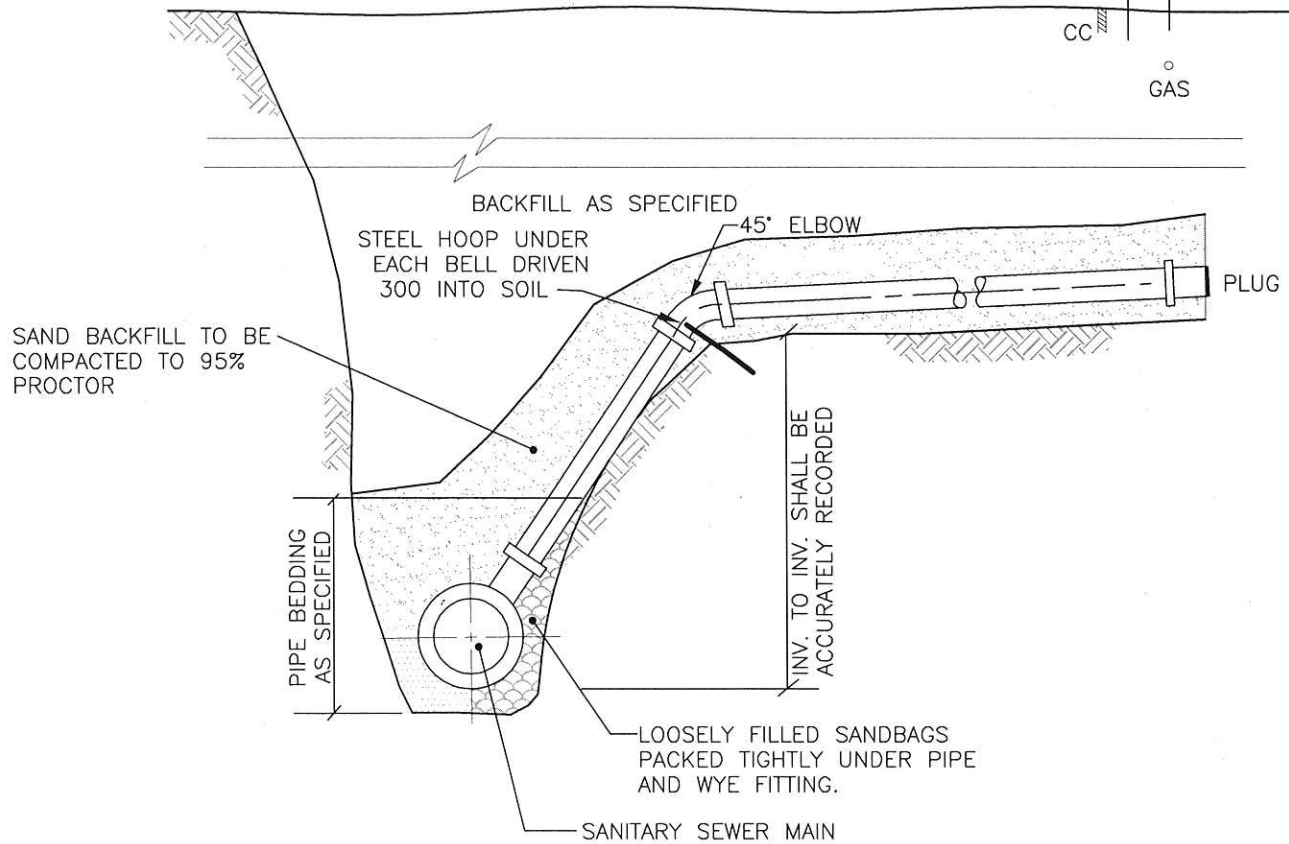
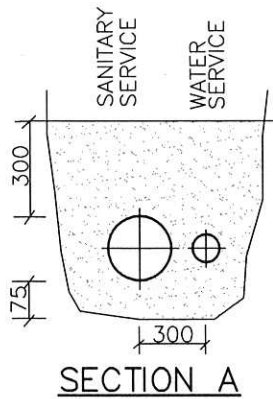


DRAWN: S.WILLIAMS  
CHECKED: J. MUSTARD  
APPROVED: J. MUSTARD

DATE: MARCH 7, 2014  
SCALE:  
DRAWING No.: SY-03

XREFS

C:\DETAILS\SHEET2-TK



THE CITY OF  
SPRUCE GROVE

## PLANNING AND INFRASTRUCTURE

### SANITARY RISER

REVISIONS		
DATE	DETAILS	DRAWN



DRAWN: T. CRAWFORD

DATE: MARCH 6, 2006

CHECKED: J. MUSTARD

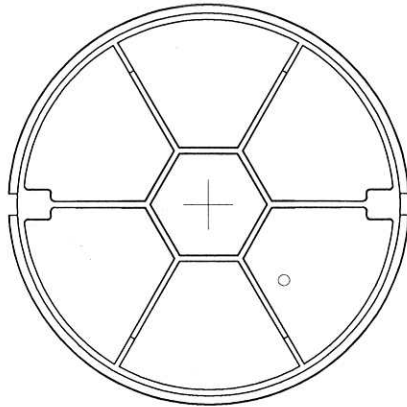
SCALE: NOT TO SCALE

APPROVED: J. MUSTARD

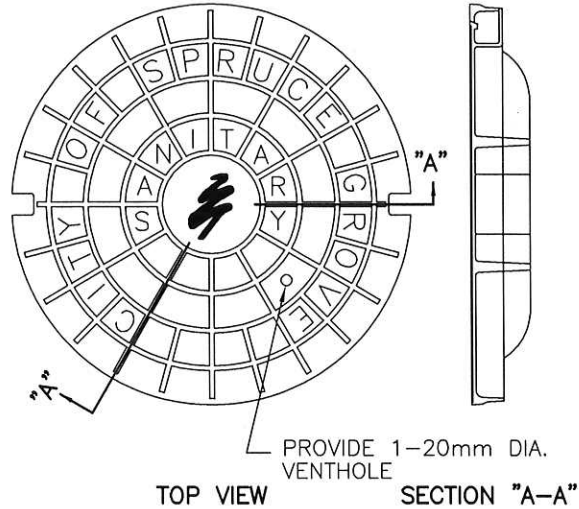
DRAWING No.: SY-04

XREFS

C:\DETAILS\SHEET2-TK

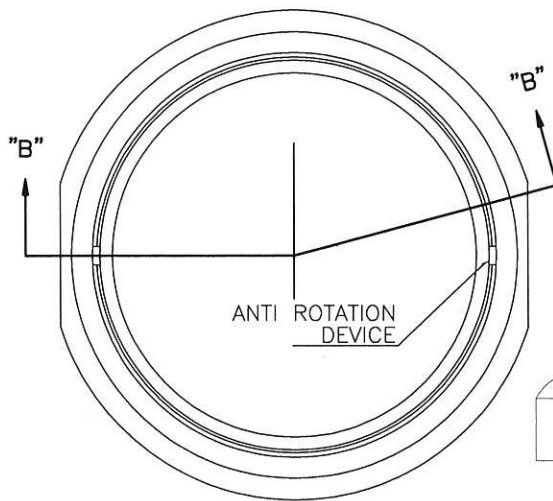


BOTTOM VIEW

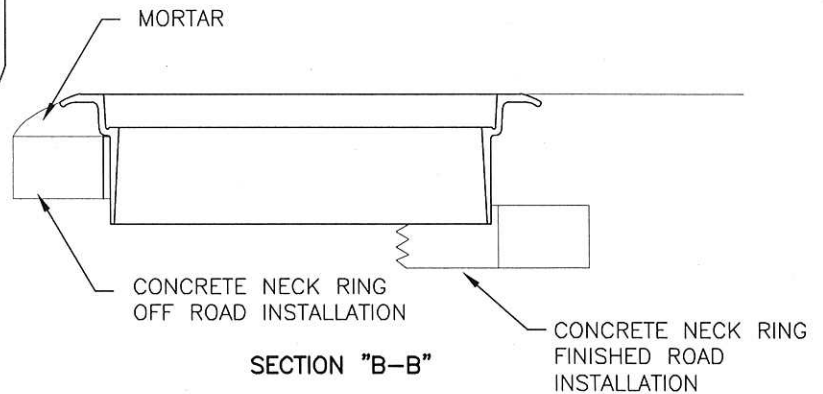


TOP VIEW

SECTION "A-A"



PLAN




SECTION "B-B"

NOTES:

1. NORWOOD FOUNDRY TYPE NF80 OR TROJAN FOUNDRY TYPE TF80
2. GROUT TO BE INSTALLED BETWEEN FLANGE AND MANHOLE BARREL ON RAISED MANHOLES.
3. SINGLE HOLE IN MANHOLE COVER SHALL BE PLUGGED IN ALL LOW AREAS OR POTENTIAL PONDING AREAS.

THE CITY OF  
SPRUCE GROVE

# PLANNING AND INFRASTRUCTURE

REVISIONS			NF/TF-80 FRAME AND COVER - SANITARY		
DATE	DETAILS	DRAWN		DRAWN:	DATE:
04/15	ADDITIONAL NOTES	RP		T. CRAWFORD	MARCH 6, 2006
				CHECKED: J. MUSTARD	SCALE: NOT TO SCALE
				APPROVED: J. MUSTARD	DRAWING No.: SY-05

XREFS

C:\DETAILS\SHEET2-TK